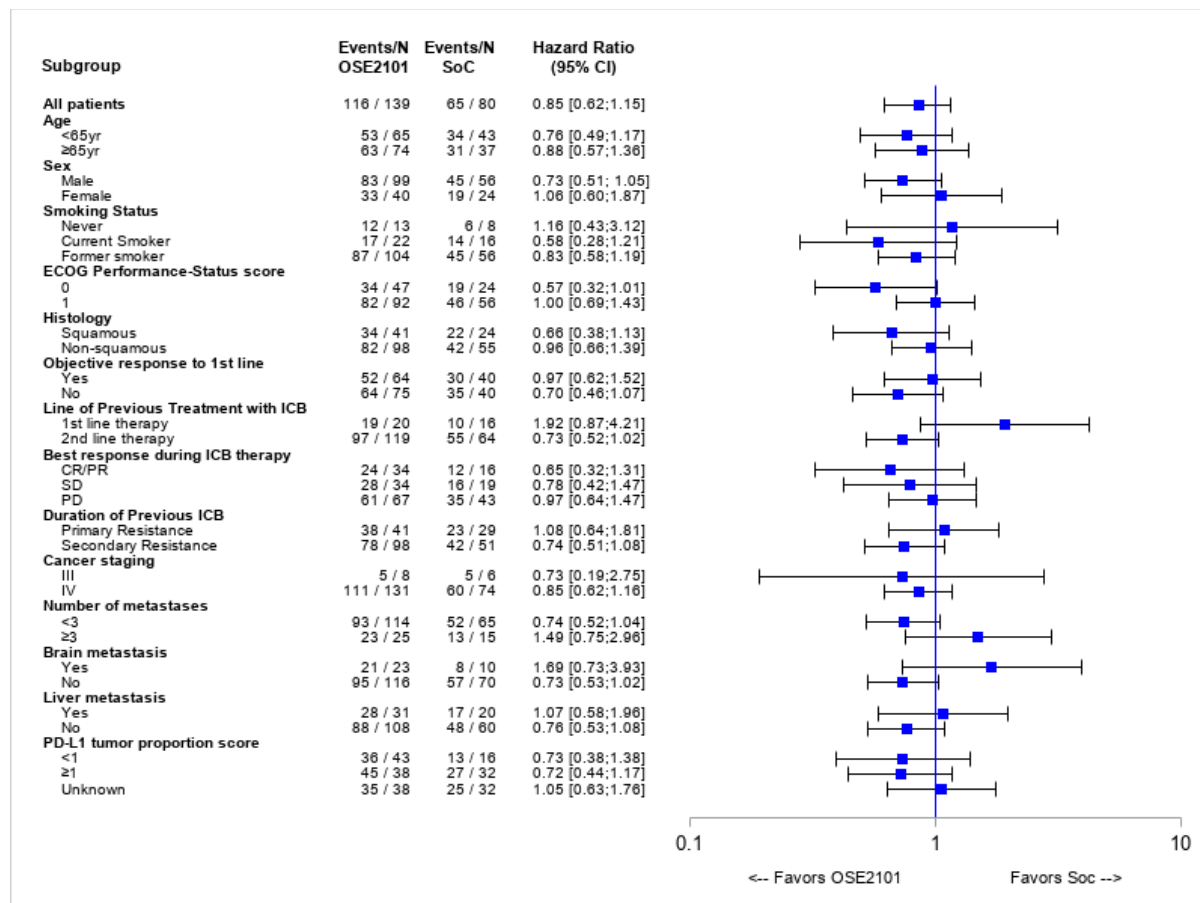


FIGURES in APPENDIX

Figure 1A. Subgroup analyses of overall survival in the ITT population of NSCLC patients with primary and secondary resistance to ICB, using a two-sided log-rank test and a Cox regression model



CR, complete response; DP, disease progression; ECOG, Eastern Cooperative Oncology Group; ICB, immune checkpoint blocker; NSCLC, Non-small cell lung cancer; PD-L1, programmed death ligand 1; PR, partial response; SD, stable disease; SoC, standard of care (docetaxel or pemetrexed).

Figure 2A: Overall survival estimates (Kaplan-Meier) in NSCLC patients before COVID-19 (blue line) and during COVID-19 (red line) pandemic, in the ITT population of NSCLC patients with primary and secondary resistance to ICB

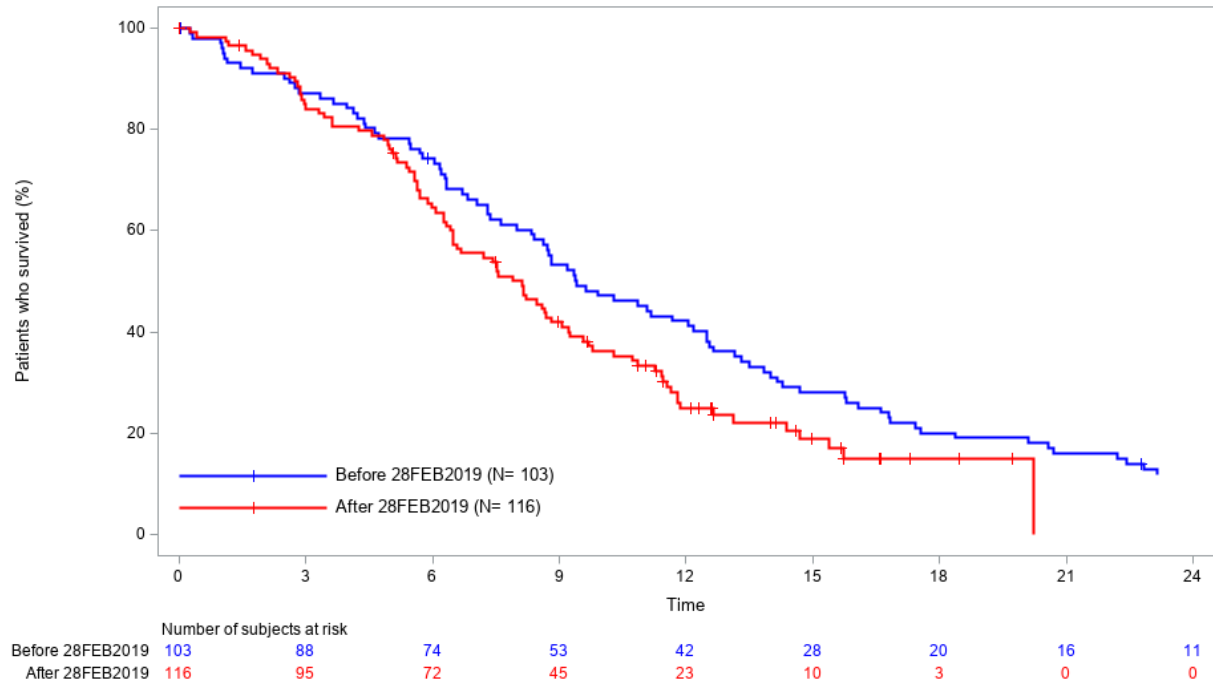


Figure 3A: Overall survival estimates (Kaplan-Meier) with (upper) or without (lower) cancer treatment after discontinuing investigational treatment of NSCLC patients with secondary resistance to ICB

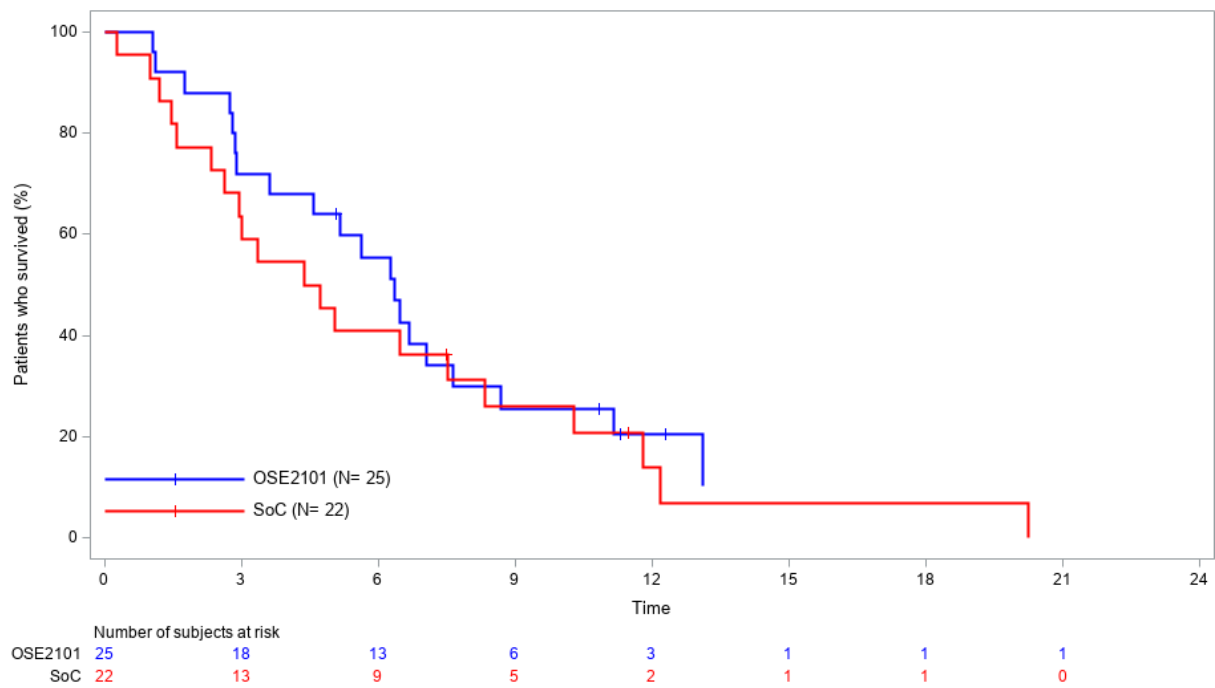
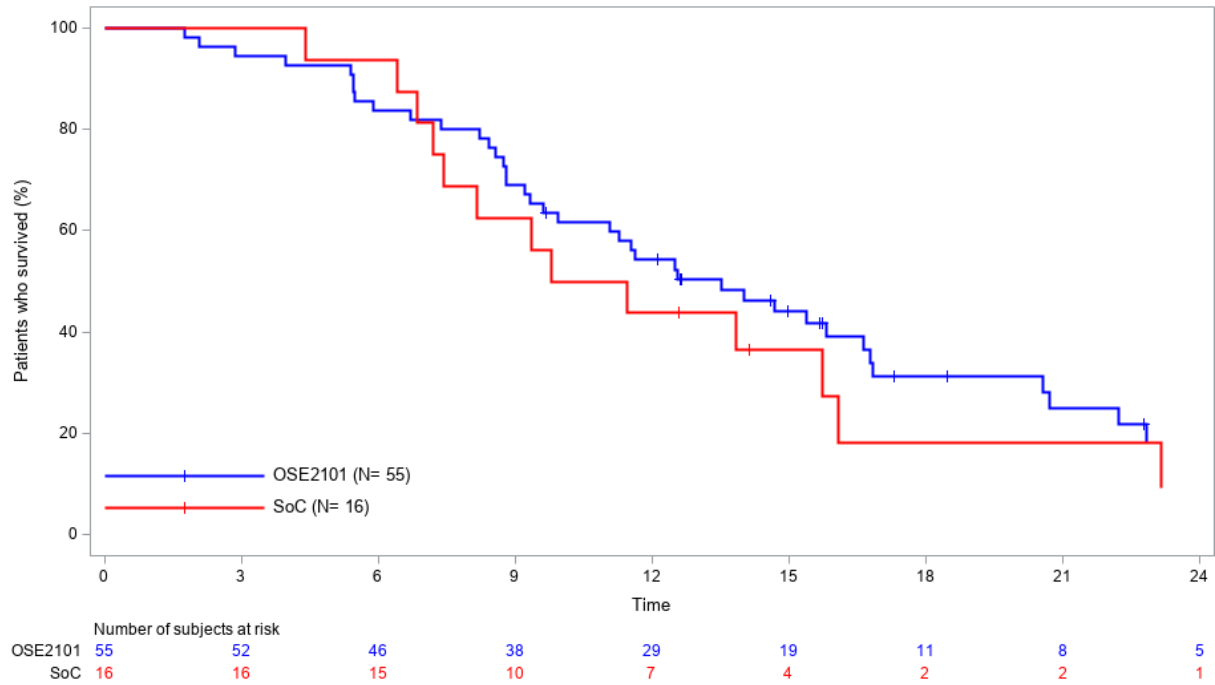


Figure 4A : Progression-free survival estimates (Kaplan-Meier) in NSCLC patients with secondary resistance to ICB

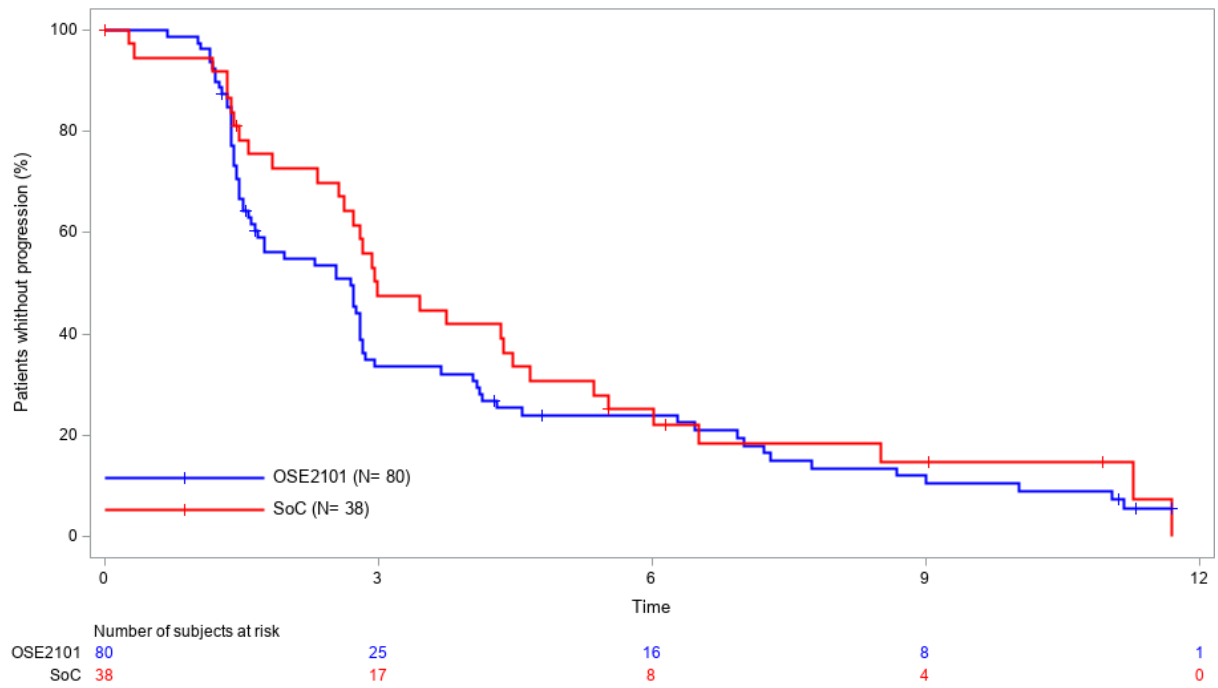
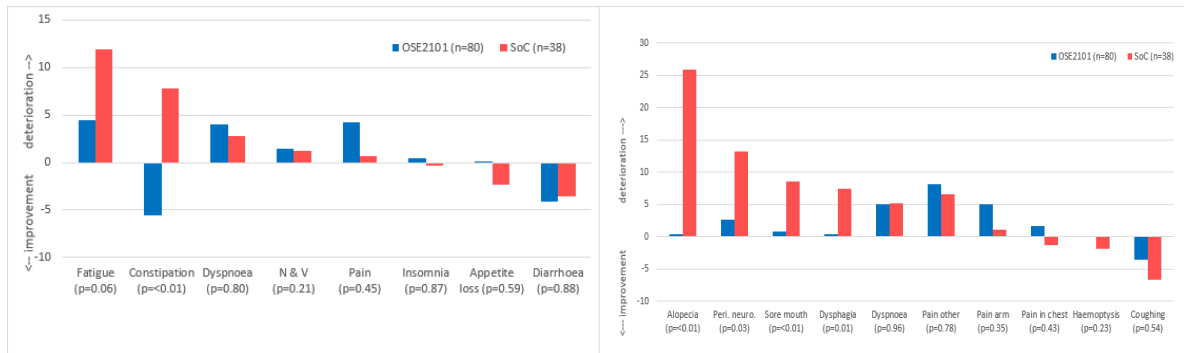


Figure 5A: Absolute changes in QoL symptoms scores from QLQ-C30 and LC-13 in the OSE2101 arm (blue) and the standard of Care (SoC; docetaxel or pemetrexed; red) arm, in NSCLC patients with secondary resistance to ICB, in the ITT population.



QoL, Quality of Life; ICB, immune checkpoint blocker; NSCLC, Non-small cell lung cancer; SoC, standard of care (docetaxel or pemetrexed); N & V, nausea and vomiting; peri. neuro, peripheral neuropathy.