

# Quantified diffusion-weighted MR imaging response assessment in rhabdomyosarcoma: an international retrospective study on behalf of the EpSSG Imaging Committee

Supplemental file

Suppl. Table 1. DW-MRI acquisition characteristics for the excluded and included cohort

Suppl. Table 2. Evaluation of homogeneous, intra-individual, scan parameters between diagnosis and response

Suppl. Table 3. Tumor related events in the full and paired cohort

Suppl. Figure 1. Embryonal rhabdomyosarcoma of the extremity with strong central necrosis, the mean ADC was 71.0% higher when including necrotic parts as compared to excluding

Suppl. table 1. DW-MRI acquisition characteristics for the excluded and included cohort

---

	Excluded	Included
<b>Manufacturer</b>		
GE	7 (6.7%)	16 (9.8%)
Philips	44 (42.3%)	73 (44.5%)
Siemens	34 (32.7%)	75 (45.7%)
Not available	19 (18.3%)	0 (0%)
<b>Slice thickness (mm)</b>		
Mean (SD)	4.26 (1.05)	4.32 (0.939)
Median [Min, Max]	4.00 [2.00, 7.00]	4.25 [2.00, 7.00]
Not available	19 (18.3%)	0 (0%)
<b>Number of B values</b>		
Mean (SD)	2.79 (1.27)	2.99 (1.63)
Median [Min, Max]	2.00 [2.00, 10.0]	2.00 [2.00, 10.0]
Not available	22 (21.2%)	2 (1.2%)
<b>Pixel spacing (mm)</b>		
Mean (SD)	1.26 (0.456)	1.37 (0.441)
Median [Min, Max]	1.19 [0.332, 2.73]	1.37 [0.449, 2.73]
Not available	19 (18.3%)	0 (0%)
<b>Highest B value</b>		
Mean (SD)	954 (101)	965 (82.7)
Median [Min, Max]	1000 [800, 1400]	1000 [800, 1200]
Not available	22 (21.2%)	2 (1.2%)
<b>Echo time (ms)</b>		
Mean (SD)	78.1 (15.5)	77.9 (12.6)
Median [Min, Max]	75.6 [30.0, 134]	78.0 [52.0, 109]
Not available	19 (18.3%)	0 (0%)

---

Suppl. Table 2. Evaluation of homogeneous, intra-individual, scan parameters between diagnosis and response

	<b>All patients (n = 134)</b>	<b>Included for ADC analyses (n = 82)</b>
<b>Manufacturer</b>		
Equal	96 (71.6%)	68 (82.9%)
Different	38 (28.4%)	14 (17.1%)
<b>Slice thickness (mm)*</b>		
Equal	71 (53.0%)	56 (68.3%)
Different	63 (47.0%)	26 (31.7%)
<b>Number of B values</b>		
Equal	88 (65.7%)	66 (80.5%)
Different	46 (34.3%)	16 (19.5%)
<b>Pixel spacing (mm)*</b>		
Equal	70 (52.2%)	53 (64.6%)
Different	64 (47.8%)	29 (35.4%)
<b>Highest B value*</b>		
Equal	92 (68.7%)	71 (86.6%)
Different	42 (31.3%)	11 (13.4%)
<b>Echo time (ms)*</b>		
Equal	81 (60.4%)	58 (70.7%)
Different	53 (39.6%)	24 (29.3%)
<b>All combined</b>		
Full scan equal	44 (32.8%)	38 (46.3%)
Different	90 (67.2%)	44 (53.7%)

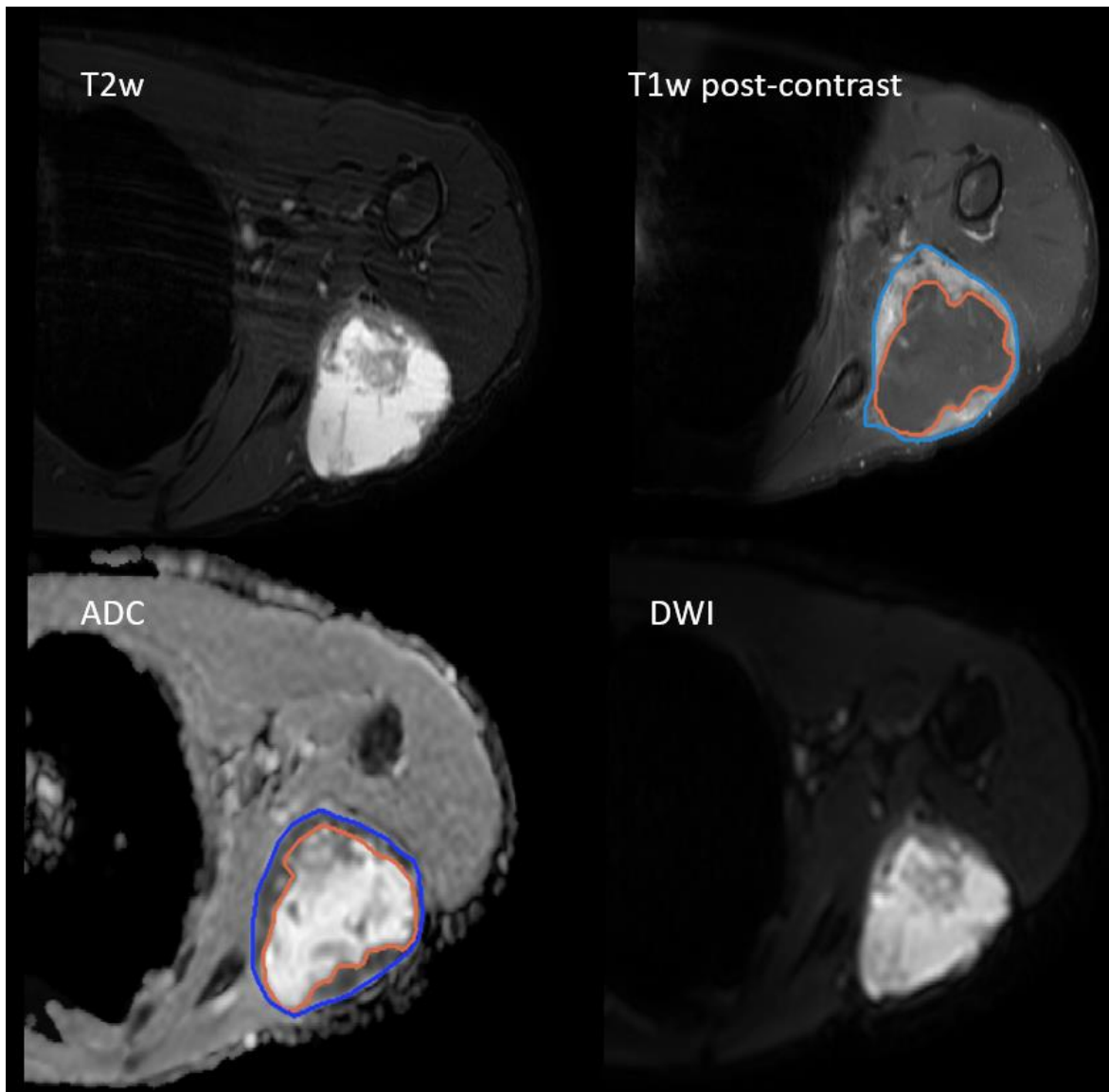
\* A 10% range of difference between scans was considered homogeneous

Supplemental Table 3. ADC values [95% CI] for the cohort and disease characteristics

ADC	Diagnosis	Response	Absolut change	Percentage change
Excluding necrotic / cystic areas				
Mean	1.13 [1.07 – 1.19]	1.55 [1.47 – 1.63]	0.42 [0.34 – 0.51]	44.2 [34.6 – 53.9]
Median	1.10 [1.04 – 1.17]	1.56 [1.48 – 1.65]	0.46 [0.37 – 0.56]	50.1 [39.1 – 61.2]
5th perc	0.80 [0.74 – 0.86]	1.07 [0.98 – 1.15]	0.26 [0.18 – 0.34]	
95th perc	1.55 [1.48 – 1.63]	2.01 [1.92 – 2.10]	0.46 [0.36 – 0.56]	
Including necrotic / cystic areas				
Mean	1.13 [1.07 – 1.19]	1.56 [1.48 – 1.64]	0.43 [0.34 – 0.51]	44.3 [34.6 – 54.0]
Median	1.10 [1.04 – 1.17]	1.57 [1.48 – 1.66]	0.47 [0.37 – 0.56]	50.4 [39.3 – 61.4]
5th perc	0.80 [0.74 – 0.86]	1.06 [0.98 – 1.15]	0.26 [0.18 – 0.35]	
95th perc	1.56 [1.48 – 1.64]	2.02 [1.93 – 2.11]	0.46 [0.36 – 0.56]	
Alveolar rhabdomyosarcoma				
Mean	0.96 [0.78 – 1.13]	1.42 [1.26 – 1.59]	0.46 [0.24 – 0.69]	55.4 [33.4 – 77.4]
Median	0.90 [0.73 – 1.07]	1.44 [1.25 – 1.62]	0.53 [0.30 – 0.77]	68.2 [40.5 – 95.9]
Embryonal rhabdomyosarcoma				
Mean	1.17 [1.11 – 1.24]	1.57 [1.48 – 1.67]	0.40 [0.30 – 0.50]	39.7 [28.6 – 50.9]
Median	1.16 [1.09 – 1.23]	1.58 [1.48 – 1.68]	0.42 [0.31 – 0.53]	43.5 [31.1 – 55.8]
Tumor size ≤ 5 cm				
Mean	1.11 [1.02 – 1.20]	1.54 [1.41 – 1.68]		
Median	1.10 [1.01 – 1.19]	1.56 [1.42 – 1.70]		
Tumor size > 5 cm				
Mean	1.15 [1.05 – 1.24]	1.56 [1.47 – 1.66]		
Median	1.11 [1.01 – 1.20]	1.57 [1.46 – 1.67]		
Standard risk group				
Mean	1.17 [1.06 – 1.28]	1.51 [1.33 – 1.69]		
Median	1.17 [1.05 – 1.28]	1.53 [1.34 – 1.72]		
High risk group				
Mean	1.19 [1.07 – 1.30]	1.60 [1.51 – 1.70]		
Median	1.16 [1.04 – 1.28]	1.62 [1.51 – 1.72]		
Very high - localized				
Mean	0.85 [0.78 – 0.91]	1.65 [1.26 – 2.04]		
Median	0.77 [0.70 – 0.84]	1.69 [1.24 – 2.13]		
Very high - metastatic				
Mean	1.05 [0.94 – 1.16]	1.47 [1.28 – 1.66]		
Median	1.01 [0.91 – 1.12]	1.46 [1.26 – 1.66]		

Suppl. Table 4. Events in all patients and patients included for ADC analyses

Event	All patients	Included patients for ADC analyses
Local relapse	18 (13.4%)	13 (15.9%)
Progressive disease	11 (8.2%)	5 (6.1%)
Metastatic relapse	16 (11.9%)	11 (13.4%)
Local and metastatic relapse	2 (1.5%)	2 (2.4%)
Toxic death	0 (0%)	0 (0%)
No event	87 (64.9%)	51 (62.2%)



Suppl. Figure 1. Embryonal rhabdomyosarcoma of the extremity with strong central necrosis at diagnosis, the mean ADC was 71.0% higher when including necrotic parts as compared to excluding