

## **Supplemental material**

**Table S1.** Description of infused OOS products and patient outcome.

**Table S2.** Analysis of risk factors for grade  $\geq 2$  adverse events.

**Figure S1.** Subgroup analysis according to CR for infused patients.

Footnote Figure S1: Impact of baseline patient- and lymphoma-related characteristics on complete response rate.

**Figure S2.** PFS (A) and OS (B) for infused patients achieving CR or PR at first disease assessment.

Footnote Figure S3: Impact of achieving a CR or a PR at 1-month post-infusion on PFS (A) and OS (B).

**Figure S3.** PFS (A) and OS (B) for all patients who underwent leukapheresis.

Footnote Figure S2: PFS (A) and OS (B) for all patients who underwent leukapheresis (intention-to-treat analysis).

**Supplementary Table 1. Description of infused OOS products and patient outcome.**

UPN	Reason for OOS	Value	Outcome
8	Low cellularity	$0.5 \times 10^8$ CAR+ viable T-cells	Complete Response
15	Low cellularity	$0.4 \times 10^8$ CAR+ viable T-cells	Complete Response
17	Low cellularity	$0.4 \times 10^8$ CAR+ viable T-cells	Progressive disease
29	Low cellularity	$0.4 \times 10^8$ CAR+ viable T-cells	Progressive disease
18	Low viability	69.4%	Progressive disease
74	Low viability	64.8%	Progressive disease

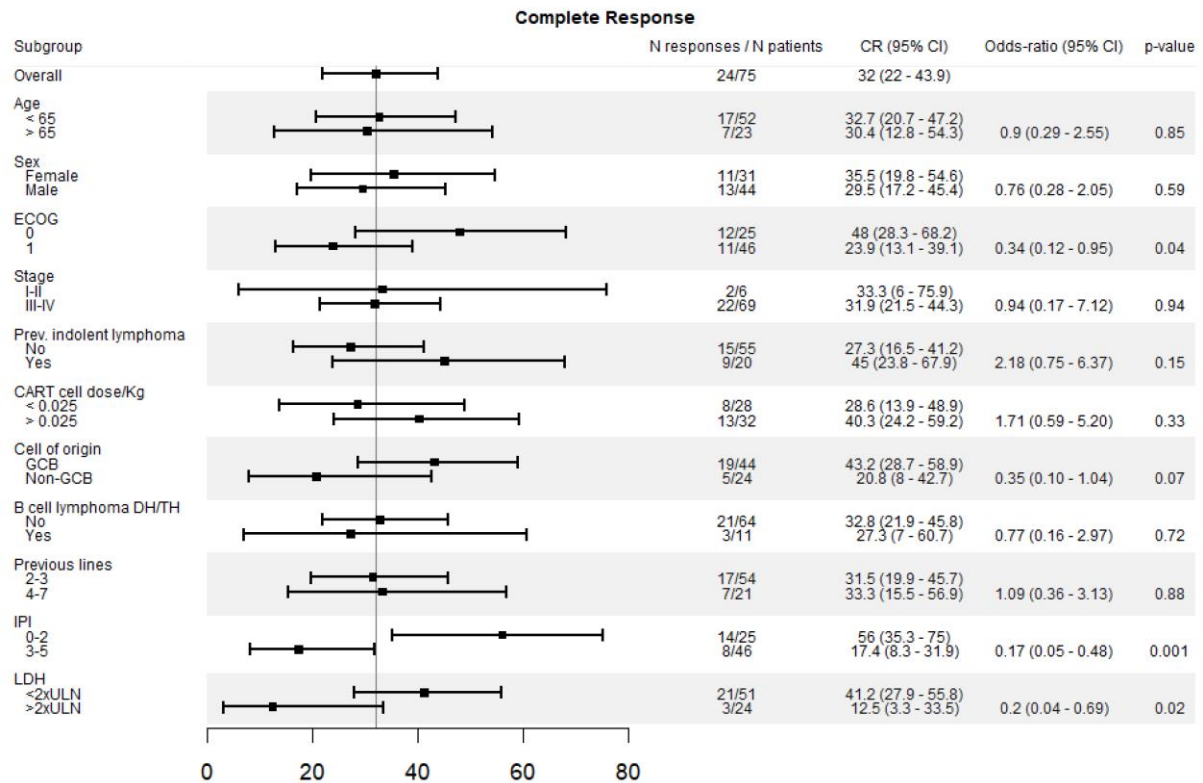
Abbreviations: UPN, Unique Patient Number, OOS, out-of-specification.

**Supplementary Table 2. Analysis of risk factors for grade  $\geq 2$  adverse events.**

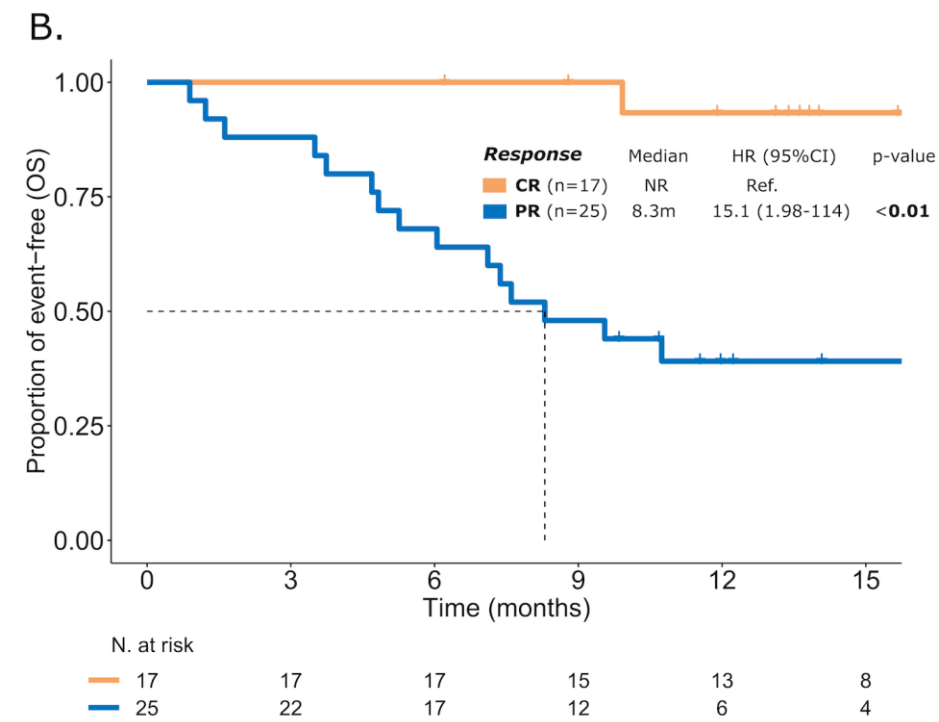
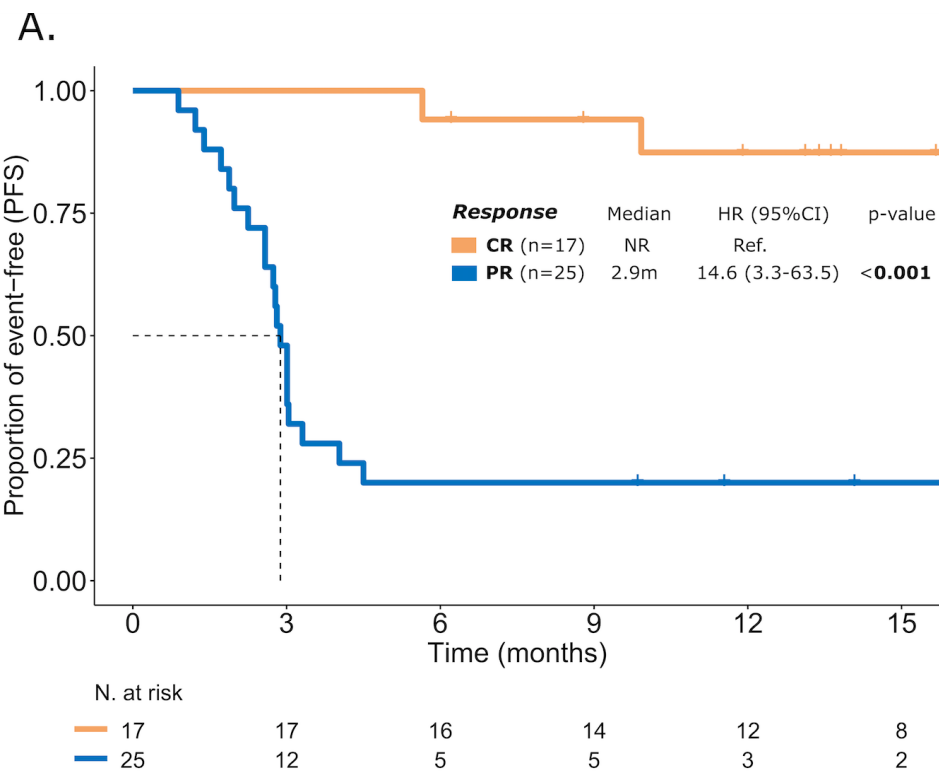
	Grade $\geq 2$ adverse events	
	OR (95% CI)	P value
<b>Age</b> (10-years increase)	0.75 (0.49 – 1.12)	0.16
<b>Sex</b> (male vs female)	0.88 (0.33 – 2.41)	0.80
<b>ECOG</b> (1+ vs. 0)	5.36 (1.57 – 24.9)	<b>0.01</b>
<b>Stage</b> (III-IV vs I-II)	2.34 (0.35 – 46.3)	0.45
<b>Prev. indolent lymphoma</b> (yes vs. no)	1.35 (0.43 – 4.04)	0.59
<b>Primary refractory</b> (yes vs. no)	2.88 (1.05 – 8.61)	<b>0.04</b>
<b>Bulky</b> (>7cm vs <7cm)	0.96 (0.34 – 2.64)	0.93
<b>Cell of origin</b> (Non-GCB vs. GCB)	0.88 (0.29 – 2.57)	0.82
<b>Previous lines</b>	0.75 (0.44 – 1.18)	0.24
<b>IPI score</b>	1.16 (0.73 – 1.88)	0.52
<b>CART cell dose</b>	1.26 (0.71 – 2.32)	0.43
<b>CART cell dose/ Kg</b> (0.01-units increase)	1.48 (1.03 – 2.2)	<b>0.04</b>
<b>LDH</b> (>2xULN vs 2x<ULN)	5.78 (1.92 – 18.6)	<b>&lt;0.01</b>

Abbreviations: Eastern Cooperative Oncology Group (ECOG); Germinal Center B-cell (GCB); International Prognostic Index (IPI); Chimeric Antigen Receptor T-cell (CART); Lactate dehydrogenase (LDH); Upper Limit of Normal (ULN)

**Supplementary Figure 1. Subgroup analysis according to CR for infused patients.**

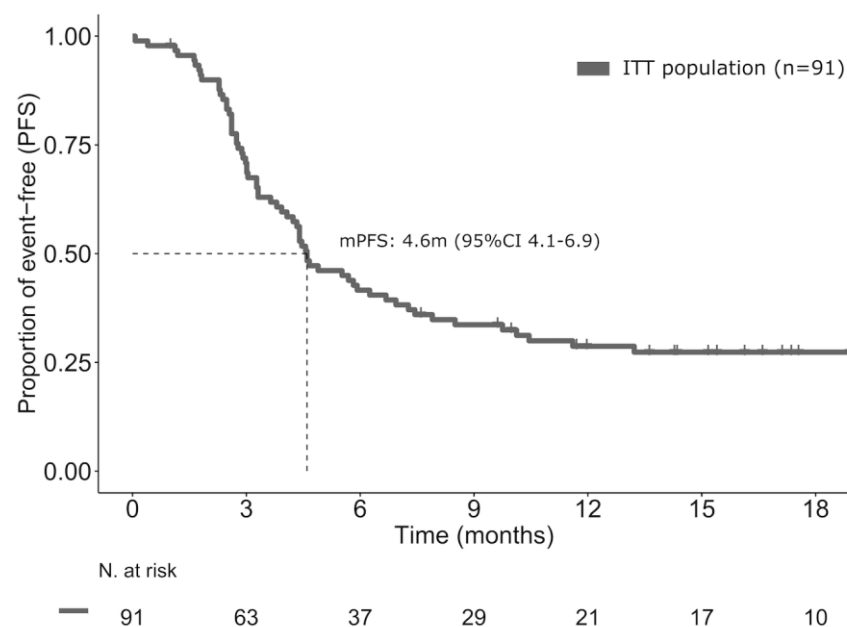


Supplementary Figure 2. PFS (A) and OS (B) for infused patients achieving CR or PR at first disease assessment.



**Supplementary Figure 3. PFS (A) and OS (B) for all patients who underwent leukapheresis.**

**A. Progression-free survival (from apheresis date)**



**B. Overall survival (from apheresis date)**

