



Research article

The SARS-CoV-2 receptor angiotensin-converting enzyme 2 (ACE2) in myalgic encephalomyelitis/chronic fatigue syndrome: A meta-analysis of public DNA methylation and gene expression data



João Malato ^{a,b}, Franziska Sotzny ^{c,**}, Sandra Bauer ^c, Helma Freitag ^c, André Fonseca ^d, Anna D. Grabowska ^e, Luís Graça ^a, Clara Cordeiro ^{b,d}, Luís Nacul ^{f,g}, Eliana M. Lacerda ^f, Jesus Castro-Marrero ^h, Carmen Scheibenbogen ^c, Francisco Westermeier ^{i,j}, Nuno Sepúlveda ^{b,c,k,*}

^a Instituto de Medicina Molecular, Faculdade de Medicina, Universidade de Lisboa, Lisbon, Portugal

^b CEAUL – Centro de Estatística e Aplicações, Faculdade de Ciências, Universidade de Lisboa, Lisbon, Portugal

^c Charité – Universitätsmedizin Berlin, corporate member of Freie Universität Berlin, Humboldt Universität zu Berlin and Berlin Institute of Health, Institute of Medical Immunology, Berlin, Germany

^d Faculdade de Ciências e Tecnologia, Universidade do Algarve, Faro, Portugal

^e Department of Biophysics, Physiology, and Pathophysiology, Medical University of Warsaw, Warsaw, Poland

^f Department of Clinical Research, Faculty of Infectious and Tropical Diseases, London School of Hygiene & Tropical Medicine, London, United Kingdom

^g Complex Chronic Diseases Program, British Columbia Women's Hospital and Health Centre, Vancouver, British Columbia, Canada

^h Vall d'Hebron Hospital Research Institute, Division of Rheumatology, ME/CFS Unit, Universitat Autònoma de Barcelona, Barcelona, Spain

ⁱ Institute of Biomedical Science, Department of Health Studies, FH Joanneum University of Applied Sciences, Graz, Austria

^j Centro Integrativo de Biología y Química Aplicada (CIBQA), Universidad Bernardo O'Higgins, Santiago, Chile

^k Department of Infection Biology, Faculty of Infectious and Tropical Diseases, London School of Hygiene & Tropical Medicine, London, United Kingdom

ARTICLE INFO

Keywords:

Myalgic encephalomyelitis/chronic fatigue syndrome

SARS-CoV-2

ACE2

Gene expression

DNA methylation

ABSTRACT

People with myalgic encephalomyelitis/chronic fatigue syndrome (ME/CFS) often report a high frequency of viral infections and flu-like symptoms during their disease course. Given that this reporting agrees with different immunological abnormalities and altered gene expression profiles observed in the disease, we aimed at answering whether the expression of the human angiotensin-converting enzyme 2 (ACE2), the major cell entry receptor for SARS-CoV-2, is also altered in these patients. In particular, a low expression of ACE2 could be indicative of a high risk of developing COVID-19. We then performed a meta-analysis of public data on CpG DNA methylation and gene expression of this enzyme and its homologous ACE protein in peripheral blood mononuclear cells and related subsets. We found that patients with ME/CFS have decreased methylation levels of four CpG probes in the ACE locus (cg09920557, cg19802564, cg21094739, and cg10468385) and of another probe in the promoter region of the ACE2 gene (cg08559914). We also found a decreased expression of ACE2 but not of ACE in patients when compared to healthy controls. Accordingly, in newly collected data, there was evidence for a significant higher proportion of samples with an ACE2 expression below the limit of detection in patients than healthy controls. Altogether, patients with ME/CFS can be at a higher COVID-19 risk and, if so, they should be considered a priority group for vaccination by public health authorities. To further support this conclusion, similar research is recommended for other human cell entry receptors and cell types, namely, those cells targeted by the virus.

* Corresponding author.

** Corresponding author.

E-mail addresses: franziska.sotzny@charite.de (F. Sotzny), nunosep@gmail.com (N. Sepúlveda).

<https://doi.org/10.1016/j.heliyon.2021.e07665>

Received 8 April 2021; Received in revised form 23 June 2021; Accepted 23 July 2021

2405-8440/© 2021 Published by Elsevier Ltd. This is an open access article under the CC BY-NC-ND license (<http://creativecommons.org/licenses/by-nc-nd/4.0/>).

1. Introduction

Myalgic Encephalomyelitis/Chronic Fatigue Syndrome (ME/CFS) is a multifactorial and complex disease characterized by two key symptoms: (1) persistent but unexplained fatigue that is not alleviated by rest; and (2) post-exertional malaise upon minimal physical or even mental effort [1, 2]. Although its cause remains unknown, a growing body of evidence strongly associates ME/CFS with several microbial and viral infections, as potential triggering factors [3, 4]. In addition, it is currently hypothesized that reactivations of dormant viral infections also play a role [5, 6] due to several immunological abnormalities [7, 8, 9]. On the molecular basis of the disease, peripheral blood mononuclear cells (PBMCs) have altered gene expression profiles [10], including a decreased abundance of the human angiotensin-converting enzyme 2 (ACE2) [11], the main receptor of the severe acute respiratory syndrome coronavirus-2 (SARS-CoV-2) for cell invasion [12, 13, 14]. Altogether, this evidence raises the question about the COVID-19 risk in patients with ME/CFS.

As basic information, ACE2 is encoded by the X-linked *ACE2* gene whose expression is predominant in the lungs, heart, skin, and kidneys [15, 16, 17, 18]. Its expression can also be detected in monocytes [19] and activated macrophages [20]. However, the percentage of *ACE2*-expressing cells is below 5% in the main immune-cell populations [20]. Accordingly, current RNA-Seq studies suggest a residual *ACE2* expression in PBMCs from healthy controls [18]. *ACE2* has an amino-acid sequence identity of 41% with its homologous angiotensin-converting enzyme (ACE) [21]. This sequence similarity increases to 61% at the nucleotide level [21]. The enzymes ACE and ACE2 are members of the renin-angiotensin-aldosterone system (RAAS), which regulates blood pressure and vascular resistance [22]. In particular, ACE and ACE2 have vasoconstriction and vasodilation effects, respectively. Given this counteracting effect, high ACE:ACE2 ratios are possible indicators of severe COVID-19 outcomes, linked to increased reactive oxygen species (ROS) production, vasoconstriction, and inflammation [23].

To answer our research question, we performed a meta-analysis of public DNA methylation and gene expression data of *ACE2* and *ACE* in PBMCs. Similar study was conducted on the DNA methylation pattern of *ACE2* in the same cell type from patients with systemic lupus erythematosus [24], an autoimmune disease whose symptoms overlap with the ones from ME/CFS [25]. To complement our findings, we also compared the mRNA levels of these two genes in PBMCs from a new cohort of female patients with ME/CFS and healthy women.

2. Materials and methods

2.1. Eligible diagnostic criteria of ME/CFS

In our meta-analysis, we selected public data from studies using either the 1994 Centre for Diseases Control criteria (1994 CDC/Fukuda) [1] or the 2003 Canadian Consensus Criteria (2003 CCC) [2] for the disease diagnosis. These criteria are defined by the presence of several key symptoms while excluding known medical conditions (e.g., multiple sclerosis or lupus) that can also explain fatigue. The choice of using these two criteria for study selection complies with the research standards set by the European Network on ME/CFS [26].

2.2. Analysis of published DNA methylation association studies

Our meta-analysis was based on six genome-wide DNA methylation association studies (Table 1), four of which [27, 28, 29, 30] were previously reviewed [31], and other two published after this review [32, 33]. Briefly, these studies aimed at identifying differentially methylated CpG dinucleotide sites between patients and healthy controls. Illumina methylation arrays were used to measure the respective DNA methylation levels with the exception of a single study (Table 1). In this study, the measurements were made by the reduced representation bisulfite sequencing [33].

With respect to the exclusion criteria, one study excluded individuals who were taking beta-blockers or ACE inhibitors [30]. Three studies excluded participants who were treated with immunomodulatory effects or affecting the underlying DNA methylation levels at the time of data collection [28, 29, 32].

In four of the published DNA methylation studies, patients and healthy controls were matched for age, gender, and body mass index (Table 1) [28, 29, 30]. In two other studies, the matching was only based on age and gender [27, 33]. Ethnicity was also used for further matching [30, 32] or the same matching could be assumed in studies that only recruited white females [28, 29]. The DNA methylation levels were quantified in CD4+ T cells [27], PBMCs [28, 29, 30, 33], and T lymphocytes [32].

We conducted a joint analysis of the four array-based studies which made the data available [28, 29, 30, 32]. We first retrieved the data from all the CpG probes located in the coding regions and the transcription starting sites (TSS) of *ACE* and *ACE2*, respectively. We then restricted our data analysis to the 27 probes shared between the Infinium

Table 1. Summary of the six DNA methylation studies under analysis.

| Reference | Sample type | ME/CFS patients | | | Healthy controls, n | Technology (manufacturer) | NCBI GEO Accession number |
|-----------|---------------|-----------------|--|----------------------------|---------------------|--|---------------------------|
| | | n | Sample characteristics | Case definition | | | |
| [27] | CD4+ T cells | 25 | Female/male adults Mean age: 50 years old Mean BMI: not reported | 1994 CDC/Fukuda | 18 | Infinium HumanMethylation450K Array (Illumina) | NA |
| [28] | PBMC | 12 | Female adults Mean age: 41 years old Mean BMI: 23 kg/m ² | 1994 CDC/Fukuda & 2003 CCC | 12 | Infinium HumanMethylation450K Array (Illumina) | GSE59489 |
| [29] | PBMC | 49 | Female adults Mean age: 50 years old; Mean BMI: 23 kg/m ² | 1994 CDC/Fukuda & 2003 CCC | 25 | Infinium HumanMethylation450 Array (Illumina) | GSE93266 |
| [30] | PBMC | 13 | Female adults Mean age: 50 years old Mean BMI: 26 kg/m ² | 1994 CDC/Fukuda & 2003 CCC | 12 | Methylation EPIC Array (Illumina) | GSE111183 |
| [32] | T lymphocytes | 61 | Female/male adults Mean age: 32 years old Mean BMI: 27 kg/m ² | 1994 CDC/Fukuda & 2003 CCC | 48 | Infinium HumanMethylation450K Array (Illumina) | GSE156792 |
| [33] | PBMC | 10 | Female/male adults Mean age: Not reported Mean BMI: not reported | 2003 CCC | 10 | Reduced representation Bisulfite sequencing | GSE153667 |

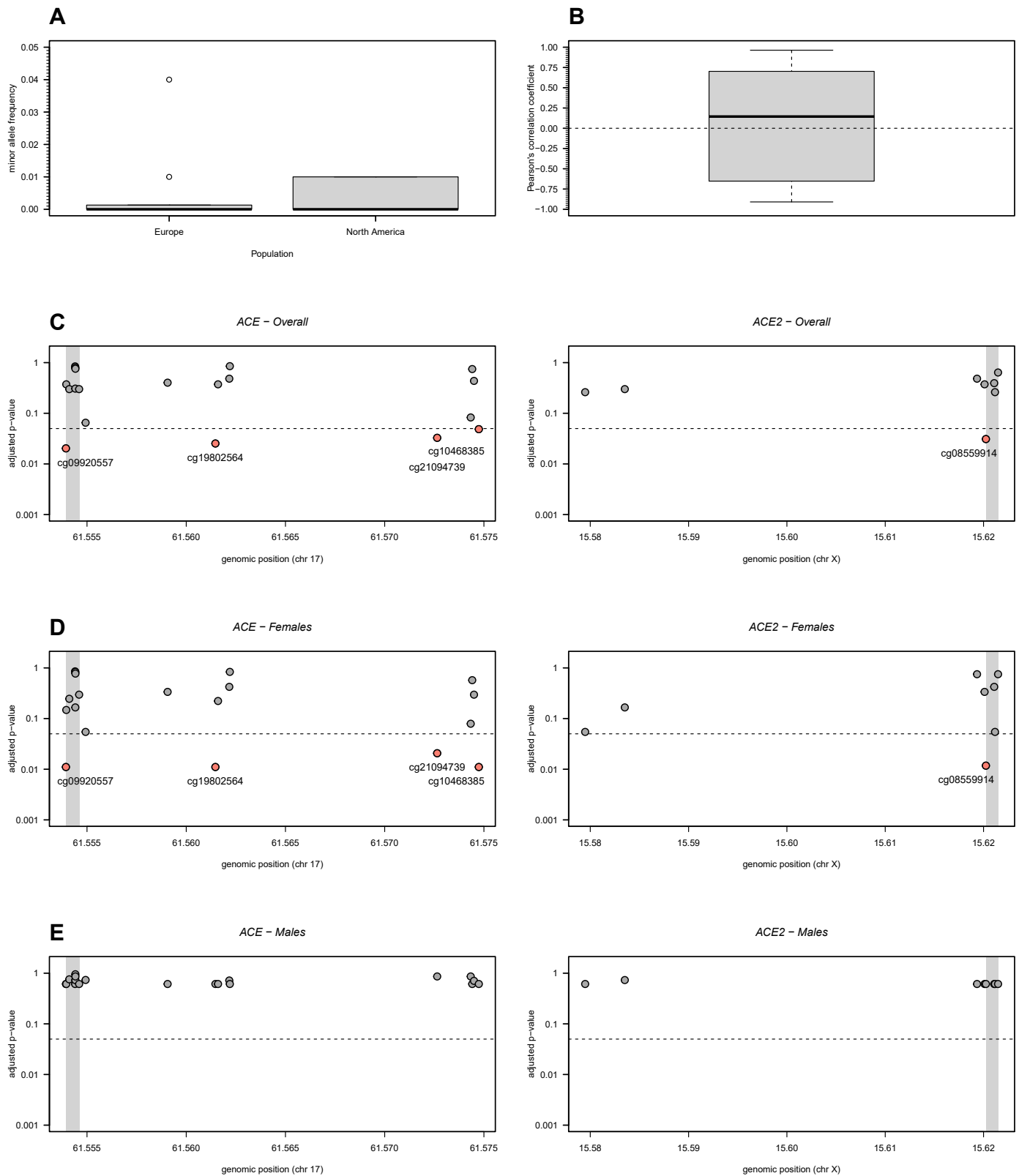


Figure 1. DNA methylation analysis of 19 and 8 CpG probes located in the *ACE* and *ACE2* genes, respectively. (A) Minor allele frequency in European and North American populations of SNPs located in the probes under analysis (see the respective data in Supplementary Table 2). (B) Boxplot of all possible Pearson's correlation coefficients (y axis) between the M-values of the probes under analysis. Horizontal dashed line represents the situation of lack of correlation. (C) Adjusted p-values for the overall association between each probe and ME/CFS. Adjusted p-values were calculated according to the Benjamini-Hochberg procedure with a false discovery rate of 5% (dashed line). Grey areas in the plots represent the TSS of the genes. (D) and (E) The same analyses as shown in C but for women and men separately.

HumanMethylation450K and the Infinium HumanMethylationEPIC arrays (Supplementary Table 1).

Before conducting the statistical analysis itself, we checked whether (1) the selected probes showed a high probability of detection, (2) they were not cross-reactive with other genomic regions, and (3) they were not affected by single nucleotide polymorphisms (SNPs) with high minor allele frequencies [34]. In the latter criterion, the SNPs included in the selected probes had a minor allele frequency less than 5% in Europeans and North Americans (Figure 1A; Supplementary Table 2) referring to the sampled populations of the studies. All probes passed the remaining basic quality control checks.

We analyzed the M-values of a given probe instead of the respective β -values to ensure a good approximation of the Normal distribution to the data [35]. Briefly, the β -values were calculated as the proportion of the methylation signal relative to the total signal for a given probe. The M-values were finally obtained by applying a logit transformation to the β -values.

To analyze the M-values of each probe, we initially estimated a linear regression model where the respective covariates were the study indicator and the disease status of the participants. In this model, we included the main effects of the covariates and the interaction. The model parameters were then estimated by the maximum likelihood method. Note that the main effect of the disease status is usually seen as the pooled effect of this covariate across all studies, as done in meta-analysis.

We then simplified the model using a backward stepwise procedure based on Akaike's information criteria. Since the effect of the study indicator was significant for the data of each probe, we tested the association between ME/CFS and a given probe using a likelihood ratio test. In this test, we compared the model including the study indicator only with the best model including that covariate and the one associated with disease status (i.e., either the model only including the main effects or the model including both main effects and the interaction term).

To control for multiple testing, we adjusted the raw p-values using the Benjamini-Hochberg procedure [36]. This adjustment ensured a false discovery rate of 5% under the assumption of independent tests.

Pearson's correlation coefficient was used to check the validity of this assumption (Figure 1B).

We also repeated the same association analysis for women and men separately. Note that three studies only recruited women [28, 29, 30] while the remaining study recruited both men and women [32]. In the latter study, there was no information available about the gender of each participant. In this case, we estimated this missing information using the function *getSex* of the R package *minfi* applied to the genome-wide DNA methylation data [37]. The resulting frequencies of men and women matched with those reported in the original study.

In the women-specific analysis, we performed the same association analysis as described above. In the men-specific analysis, we compared a linear regression model with the disease status as the single covariate against another model without that covariate, when analyzing data from each probe. The comparison was done by the likelihood ratio test whose p-values were then adjusted for multiple testing in the same way as described above.

Finally, for the study which did not share the respective data [27], we checked whether the reported differentially methylated CpG probes were located in either *ACE* or *ACE2* (see Table 1 from this study). We did the same for the study based on the reduced representation bisulfite sequencing technology [33] (see Additional File 1 from this study).

2.3. Analysis of gene expression studies

Our meta-analysis of gene expression studies was focused on eight reports using microarray technology (Table 2) [11,38–44]. These studies complied with the Minimum Information about a Microarray Experiment (MIAME) standard [45] and, therefore, they were considered to have sufficient quality for their inclusion in the meta-analysis. In particular, these studies normalized the data which ensured comparability between different samples and between different measurements of the same genes.

Gene expression of these studies was performed in PBMCs (5 studies), whole blood (2 studies) and muscle biopsies (one study). One study excluded participants who were taking any regular medication [43].

Table 2. Summary of the 8 microarray-based gene expression studies under analysis, ordered by the year of publication.

| Reference | Sample type | ME/CFS patients | | | Healthy controls, n | Technology (Manufacturer) | ACE/ACE2 available | Data availability (NCBI GEO Assession number) |
|-----------|-----------------|-----------------|--|-----------------|---------------------|--|--------------------|---|
| | | n | Sample characteristics | Case definition | | | | |
| [38] | PBMCs | 5 | Female adults Mean age: 42 years old Mean BMI: not reported | 1994 CDC/Fukuda | 5 | Atlas Glass Human 3.8 I Microarray (BD Biosciences Clontech) | No/No | No (NA) |
| [39] | PBMCs | 25 | Female/male adults Mean age: 41 years old Mean BMI: not reported | 1994 CDC/Fukuda | 25 | Custom microarray (Nimblegen) | Unclear | No (NA) |
| [40] | Whole blood | 25 | Female/male adults Mean age: 43 years old Mean BMI: not reported | 1994 CDC/Fukuda | 50 | GeneChip Human Genome U133 Plus 2.0 (Affymetrix) | Yes/Yes | No (NA) |
| [41] | Whole blood | 11 | Female/male adults Mean age: 34 years old Mean BMI: 20.3 kg/m ² | 1994 CDC/Fukuda | 11 | Custom microarray (NA) | Yes/No | Yes (NA) ^a |
| [42] | Muscle biopsies | 4 | Female/male adults Mean age: 45/37 years old Mean BMI: not reported | 1994 CDC/Fukuda | 5 | Operon V2.0 (CRIBI University of Padova) | Yes/Yes | No (NA) |
| [43] | PBMCs | 8 | Male adults Median age: 36 years old Mean BMI: not reported | 1994 CDC/Fukuda | 7 | GeneChip Human Genome U133 (Affymetrix) | Yes/Yes | Yes (GSE14577) |
| [11] | PBMCs | 37 | Female/male adults Mean age: 51 years old Mean BMI:29.4 kg/m ² | 1994 CDC/Fukuda | 25 | MWG 20K human Array (Biotech MWG) | Yes/Yes | No (NA) |
| [44] | PBMCs | 33 | Female/male adults Mean age: not reported Mean BMI: not reported | 1994 CDC/Fukuda | 21 | GeneChip Human Gene ST (Affymetrix) | Yes/No | No (NA) |

^a Data shared as a supplementary file in the online version of the study.

Another study reviewed the medications taken by the participants [11]. However, it was unclear which medications were considered as a part of the exclusion criteria. A third study reported that healthy controls were free from any medication at the time of sampling [41].

Three additional studies using microarray technology [46, 47, 48] were excluded from our meta-analysis due to unclear or ineligible case definitions of ME/CFS. We also excluded four RNA-seq studies [49, 50, 51, 52], because of insufficient reporting on the basic quality control checks. In particular, these studies did not report the percentage of reads that could be mapped onto the reference transcriptome, the percentage of the transcriptome covered, the average number of mapped reads per transcript, the relationship between the GC content and the mapped read distribution, as recommended elsewhere [53]. More importantly, given the high sequence homology between ACE and ACE2, these studies did

not explain how their mapping algorithms dealt with reads that could be ambiguously mapped onto different locations in the transcriptome.

The selected studies were conducted in small cohorts of patients with ME/CFS (mean sample size = 18.5; range = 4–37) and healthy controls (mean sample size = 18.6; range = 5–50 individuals) (Table 2). In these studies, the patients and healthy controls were matched for age and gender. Different commercial and custom microarray technologies were used for the respective gene expression quantification. There was only one study in which the microarray did not include any probe in the genes of interest [38]. Another study used a custom array based on 9,522 genes from the RefSeq database, as available in August 2002 [39]. However, this study did not provide the list of genes included in the respective microarray. In terms of data sharing, one study made the data available in the GEO database [43] and another one within the respective publication

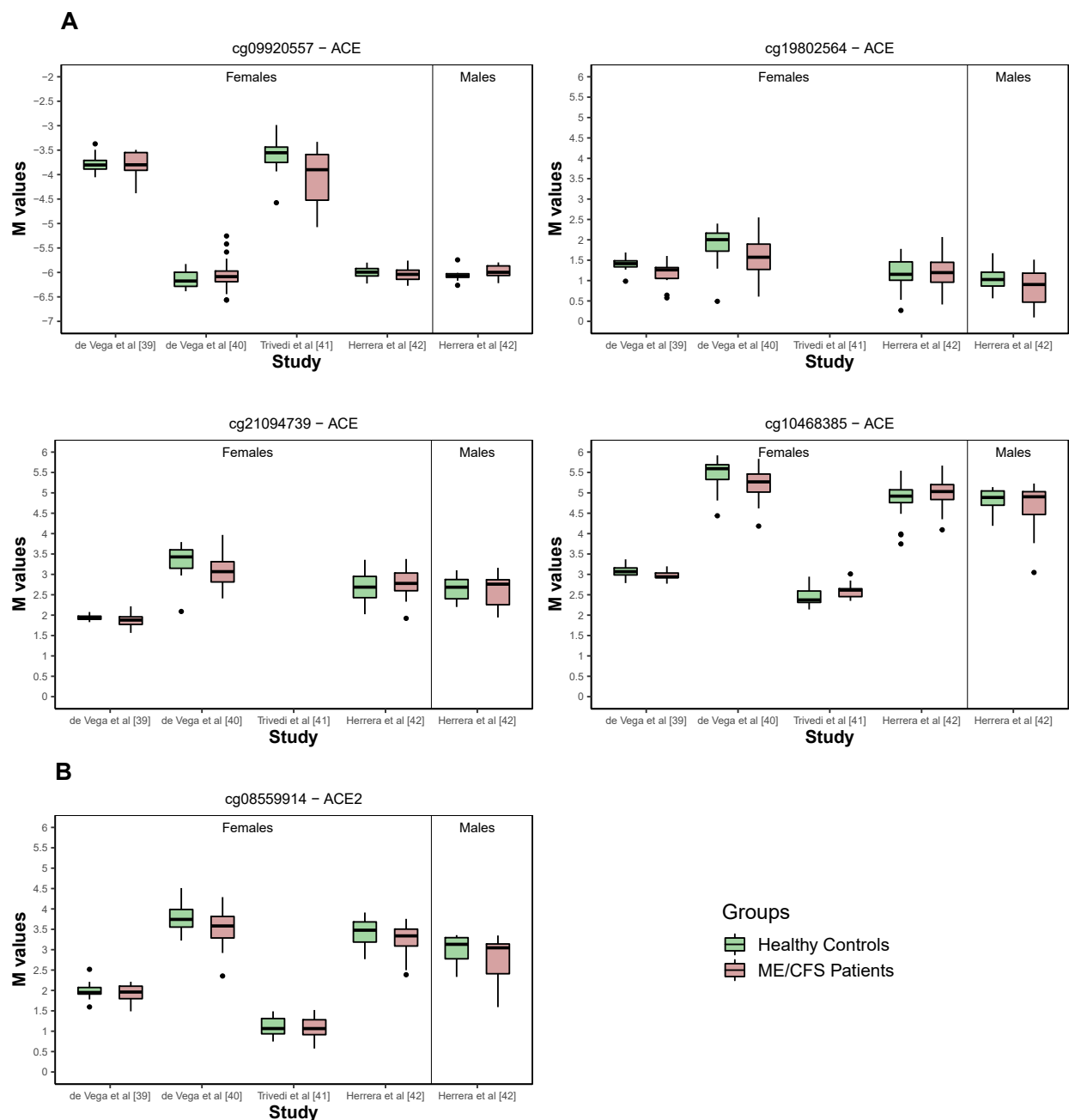


Figure 2. Boxplots per study, group and gender of the M-values referring to probes identified in Figures 1C and 1D. (A) Significant probes located in ACE. (B) Significant probe located in ACE2.

[41]. The latter study used a custom microarray that measured the expression of stress-related genes including *ACE* but excluding *ACE2*.

Before conducting a meta-analysis of the available data, we first re-analyzed two studies where the normalized data were available [41, 43]. In the first study [41], we calculated the mean of the $\log_2(\text{fold-change})$ for *ACE* and the respective standard error. Note that the microarray used in this study did not include any probe in *ACE2*. In the second study [43], we initially calculated the mean and the respective standard error of the $\log_2(\text{fold-change})$ for each probe located in *ACE* and *ACE2*. We then pooled each pair of means for the same gene using the inverse-variance weighting method [54]. A third study reported the mean of the $\log_2(\text{fold-change})$ for *ACE2* and the respective p-value using a two-tailed Student's test [11]. In this case, we determine the quantile of the t-distribution associated with half of the reported p-value, equated it to the test statistic, and solved the resulting equation as a function of the standard error. No information was available from this study concerning the expression levels of *ACE*.

Finally, we pooled the different estimates for the same gene from different studies using the inverse-variance weighting method [54].

2.4. Analysis of new RNA data on the *ACE/ACE2* gene expression in ME/CFS

2.4.1. Study participants

Thirty-seven women with ME/CFS were recruited in 2020 from the outpatient clinic for immunodeficiencies at the Institute for Medical Immunology at the Charité-Universitätsmedizin Berlin, Germany. These patients were diagnosed according to the 2003 CCC while excluding other medical or neurological diseases which could explain fatigue [2]. Thirty-four women with self-reported healthy status were recruited from staff.

2.4.2. Experimental procedure for RNA isolation and expression

Consistently with previous studies of ME/CFS, the gene expression quantification was performed in PBMCs. These cells were isolated from heparinized whole blood by density gradient centrifugation using Biocoll Separating Solution (Merck Millipore). Total RNA was isolated and extracted from 2×10^6 PBMCs according to the manufacturer's instructions (NucleoSpin RNA Kit, Macherey-Nagel, cat. nr. 740955.50). Afterwards cDNA was prepared by reverse transcription (High-Capacity cDNA Reverse Transcription Kit, Applied Biosystems, cat. nr. 4368814) and real-time PCR was performed using TaqMan® Universal PCR Master Mix (cat. nr. 4305719) and TaqMan® Gene Expression Assays (cat. nr. 4331182) for *ACE* (Hs00174179_m1), *ACE2* (Hs01085333_m1) and the housekeeping gene *HPRT1* (Hs02800695_m1) (Applied Biosystems). The amplification of *ACE* and *HPRT1* was based on 20 ng template cDNA. For the amplification of *ACE2*, this quantity was increased to 100 ng. All measurements were performed with the ABI7200 and software Step One Plus as absolute quantification according to manufacturer's instruction. Relative gene expression was analysed using the ΔCT method.

2.4.3. Statistical analysis

We first tested whether patients and healthy controls were matched for age using the Kolmogorov-Smirnov test for two independent samples. For statistical convenience, gene expression values were independently transformed for *ACE* and *ACE2* using a Box-Cox transformation [55]. The parameter estimates of this transformation were 0.303 and 0.225 for *ACE* and *ACE2*, respectively. The transformed values for each gene were then analyzed as the outcome variable of a linear regression model specifying age and disease status of the participants as the respective covariates. The linear regression model was estimated using the maximum likelihood method. After estimating the models, we tested the normal distribution in the resulting residuals using the Shapiro-Wilk test. We also visually inspected the assumption of constant variance of the same residuals as a function of the covariates.

Note that we were unable to quantify the *ACE2* expression in 11 patients due to cDNA material below the limit of detection. These problematic samples could be due to a lower expression of *ACE2* in ME/CFS patients than in healthy controls. To test this hypothesis, we compared the respective proportion of samples below the limit of detection using the Pearson's χ^2 test for two-way frequency tables.

The significance level of the statistical analysis was set at 5%.

2.4.4. Ethical approval

The protocol of this study was approved by the Ethics Committee of Charité-Universitätsmedizin Berlin in accordance with the 1964 Declaration of Helsinki and its later amendments (reference number EA2/067/20). All patients and healthy controls gave written informed consent to participate in the study.

2.5. Statistical software

We performed our statistical analysis in the R software version 4.0.3. In this analysis, we used the following Bioconductor packages: *hgu133a.db*, *hgu133plus2.db*, *IlluminaHumanMethylation450kanno.ilmn12.hg19*, and *IlluminaHumanMethylationEPICanno.ilm10b2.hg19* to retrieve the annotation of the GeneChip HG-U133A, GeneChip U133 + 2, Infinium HumanMethylation450K Array and HumanMethylationEPIC arrays, respectively; *minfi* to estimate the sex of each individual from DNA methylation data [37]. The R scripts are freely available from the first and last authors upon request.

3. Results

3.1. Meta-analysis of *ACE/ACE2* DNA methylation in ME/CFS patients

The oldest DNA methylation study [27] did not make the data available and hence, we screened the list of 120 differentially methylated probes (see table 1 from this study). Although located in 70 genes, these probes were neither located in *ACE* nor *ACE2*. We also screened the list of differentially methylated probes reported by the study based on the reduced representation bisulfite sequencing technology (see Additional File 1 from ref. [33]). Again, none of these probes was in the *ACE* or *ACE2* loci.

For the four array-based studies [28, 29, 30, 32], we conducted a joint analysis of the respective data in accordance with a meta-analysis. We first observed that the M-values of the 27 probes under investigation tended to be uncorrelated with each other (Figure 1B). This observation supported the use of the Benjamini-Hochberg procedure to adjust the raw p-values under a multiple testing scenario.

The subsequent analysis suggested four CpG probes in *ACE* to be associated with ME/CFS (Figure 1C). The probe cg09920557 belongs to the TSS region of the gene while the remaining probes (cg19802564, cg21094739, and cg10468385) are located in the gene body. The best linear regression models for each probe included both the main effects of the study indicator and of the disease status and the respective interaction term (Supplementary Table 3). The statistical interaction between these two covariates could be seen when plotting the whole data set (Figure 2A). Although not significant, the estimated main effect of the disease status was negative for each of the significantly associated probes.

Concerning the probes in *ACE2*, the only significant association with ME/CFS was obtained for cg08559914 located in the TSS region of the gene (Figure 1C). According to the best linear regression model for this probe, there was a negative association between the respective M-values and ME/CFS (coefficient estimate = -0.141 with a standard error of 0.048; Figure 2B and Supplementary Table 3). Given that a hypomethylated promoter region is typically indicative of an increased expression of the respective gene, this finding suggested an increased *ACE2* expression in patients with ME/CFS.

We then repeated the same analysis for women and men separately. For women, we obtained the same disease associations, as described

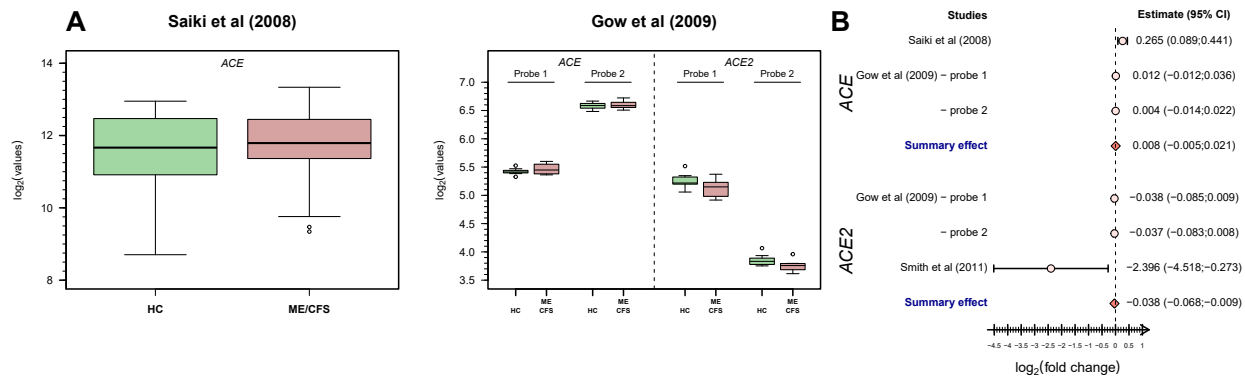


Figure 3. Analysis of *ACE/ACE2*-related data from eligible microarray-based gene expression studies. (A) Boxplots of the data from these studies (Saiki et al (2008), ref. [41]; Gow et al (2009); ref. [43]). (B) Forest plot for the study-specific and pooled estimate of the mean of the $\log_2(\text{fold-change})$ between patients with ME/CFS and healthy controls using data shown in A.

above (Figure 1D and Supplementary Table 3). For men, we did not find any significant associations, probably due to data from a single study [32] (Figure 1E).

3.2. Meta-analysis of *ACE/ACE2* gene expression in ME/CFS patients

We first conducted a re-analysis of the two studies in which the expression levels of *ACE* or *ACE2* were available for each participant (Figure 3A) [41,43]. In the first study [41], there was evidence for an increased expression of *ACE* in patients with ME/CFS (mean of the $\log_2(\text{fold-change}) = 0.265$; 95% CI=(0.089; 0.441)). In the second study [43], the means of the $\log_2(\text{fold-change})$ were estimated at 0.012 (95% CI=(-0.012; 0.036)) and 0.004 (95% CI=(-0.014; 0.022)) for the two probes in *ACE*. The corresponding estimates for the two probes in *ACE2* were -0.038 (95% CI=(-0.085; 0.009)) and -0.037 (95% CI=(-0.083; 0.008)) (Figure 3A). The pooled estimates for this study were 0.007 (95% CI=(-0.006; 0.020)) and -0.038 (95% CI=(-0.067; -0.008)) for *ACE* and *ACE2*, respectively.

Although not sharing the data, there was a study [11] that reported a significant negative association between ME/CFS and *ACE2* expression (see online Supplementary Table 2 of this study). In this case, we obtained the following mean of the $\log_2(\text{fold-change}) = -2.396$ and 95% CI=(-4.518; -0.273).

We then pooled the estimates from different studies for the same gene: 0.008 (95% CI=(-0.005; 0.021)) and -0.038 (95% CI=(-0.068; -0.009)) for *ACE* and *ACE2*, respectively (Figure 3B). Therefore, our meta-analysis suggested a reduced expression of *ACE2* but not of *ACE* in patients with ME/CFS when comparing to healthy controls.

Finally, the remaining gene expression studies neither shared the respective data nor reported any differential *ACE/ACE2* expression between patients and healthy controls.

3.3. Analysis of *ACE/ACE2* gene expression from a new female cohort

To complement our findings from the above meta-analysis, we measured the *ACE* and *ACE2* mRNA levels in PBMCs from 37 women with ME/CFS (mean age = 41.1 years old) and 34 healthy women (mean age = 37.4 years old) (Table 3). Patients and healthy participants were matched for age (Kolmogorov-Smirnov test, $p = 0.38$). There was no information about the disease duration for 4 patients. The average disease duration for the remaining patients was 5.4 months in relation to the time of diagnosis (range = 0–24 months).

We observed higher mRNA levels of *ACE* than of *ACE2* (Table 4, Figure 4A). There was no evidence for a significant correlation between *ACE* and *ACE2* expression levels (Spearman's correlation coefficient = -0.120) (Figure 4B). In contrast to the above meta-analysis, we could not find a reduced expression of *ACE2* in patients with ME/CFS using the

complete case scenario (Table 4). However, there were 11 (29.7%) of the 37 samples from patients in which the expression level of *ACE2* was below the limit of detection. This proportion of samples was significantly higher than that for healthy controls given that the expression of *ACE2* could be quantified in all the samples (29.7% versus 0%; Pearson's χ^2 test, $p = 0.002$). Consequently, we could not rule out that the patients with ME/CFS from this cohort have a decreased expression of *ACE2* when compared to healthy controls. Finally, in accordance with our meta-analysis, there was no evidence of differential expression of *ACE* between patients and healthy controls from this cohort.

4. Discussion

In this work, we investigated potential differences in *ACE/ACE2* DNA methylation and expression levels between patients with ME/CFS and

Table 3. Summary statistics for the gene expression of *ACE* and *ACE2* from the German female study participants where data of *ACE2* were only available for 26 affected patients.

| Summary statistic | Healthy controls | ME/CFS patients |
|--|------------------|-----------------|
| N | 34 | 37 |
| Mean age (range), years | 37.4 (23; 65) | 41.1 (19; 60) |
| Mean disease duration since diagnostic (range), months | NA | 5.4 (0; 24) |
| ACE | | |
| Geometric mean | 0.153 | 0.144 |
| Interquartile range | 0.087 | 0.073 |
| ACE2 | | |
| Geometric mean | 0.002 | 0.001 |
| Interquartile range | 0.005 | 0.004 |

Table 4. Analysis of the linear regression models for the Box-Cox-transformed *ACE* and *ACE2* mRNA levels where data were only available for 26 ME/CFS patients.

| Analysis | Estimate (SE) | P-value |
|---------------------------------|----------------|---------|
| Box-Cox transformed ACE | | |
| (Intercept) | 0.541 (0.032) | <0.001 |
| Age | 0.001 (0.001) | 0.328 |
| Disease Status (ME/CFS) | -0.013 (0.018) | 0.481 |
| Box-Cox transformed ACE2 | | |
| (Intercept) | 0.307 (0.038) | <0.001 |
| Age | -0.001 (0.001) | 0.137 |
| Disease Status (ME/CFS) | -0.006 (0.021) | 0.789 |

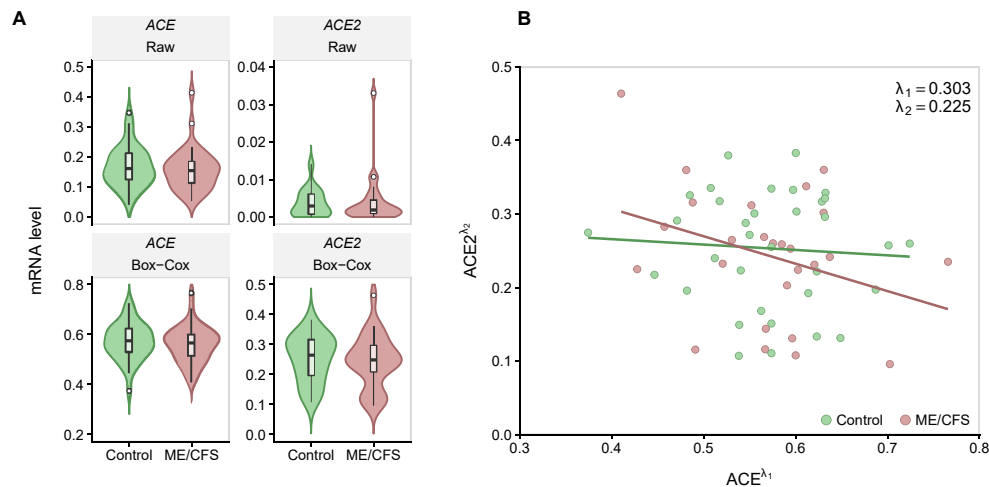


Figure 4. Analysis of *ACE* and *ACE2* expression levels from the German study. (A) Violin plots of *ACE* (left side) and *ACE2* (right side) mRNA raw data (upper row) and transformed data using a Box-Cox transformation (lower row). (B) Scatterplot between the transformed *ACE* and *ACE2* expression levels (Spearman's correlation coefficient = -0.120).

healthy controls. With the identification of these differences, we expected to determine the health risk of patients with ME/CFS if infected by SARS-CoV-2. However, we stumbled upon hurdles related to (i) data unavailability for a possible re-analysis, (ii) availability of data derived from PBCMs and related subsets in which *ACE2* is not particularly expressed, (iii) studies with unclear data quality, and (iv) studies using disease case definitions that are not recommended for research. As a consequence, we could not provide a more definite answer to our main research question.

Notwithstanding these difficulties, we could identify four CpG probes on *ACE* and another one on *ACE2* with decreased DNA methylation levels in patients with ME/CFS. This finding suggested an increased expression of the respective genes. However, our meta-analysis of public data suggested the opposite. Such decrease in *ACE2* expression was partially confirmed by new data in which there was a significant higher proportion of samples below the limit of detection in patients with ME/CFS than in healthy controls. Nonetheless, it was clear that *ACE2* is not particularly expressed in PBCMs from both patients with ME/CFS and healthy controls, as mentioned in the introduction.

In general, *ACE2* downregulation is known to occur after host-cell entry by SARS-CoV-2 [56]. This downregulation is particularly problematic in individuals affected by cardiovascular diseases, diabetes, and other medical conditions, due to their low *ACE2* levels before the infection [57]. SARS-CoV-2 infection is then expected to further increase the *ACE*:*ACE2* ratio, thus, promoting vasoconstriction, increased production of ROS and inflammation in patients with these co-morbidities [23]. In this scenario, a putative reduction of the *ACE2* expression makes patients with ME/CFS similar to these patients with a high risk for COVID-19. As a consequence, patients with ME/CFS could be considered a priority group for vaccination by public health authorities. The fundamental question is then to know whether our findings based on PBCMs could recreate what occurs in pulmonary epithelial and endothelial cells, the main targets of SARS-CoV-2. Future research should be conducted to answer this question, as similarly done in past studies aiming at understanding how the gene expression profiles from PBCMs could mimic those present in other tissues affected by a given disease [58, 59, 60].

Given the residual *ACE2* expression in PBCMs under normal conditions, one is tempted to say that SARS-CoV-2 does not infect these cells. However, earlier studies on SARS-CoV-1 found this virus within T lymphocytes, macrophages, and dendritic cells [61]. More recently, an *in vitro* study was able to infect PBCMs with SARS-CoV-2 [62]. Monocytes are particularly susceptible to such infections. In this context, one cannot

rule out that SARS-CoV-2 might use alternative receptors when infecting PBCMs.

Among the alternative receptors for SARS-CoV-2, the human transmembrane protease serine 2 (TMPRSS2) was suggested as a strong candidate [63] due to its role on SARS-CoV-1 infection [64, 65]. This protease seems to induce SARS-CoV-2 cell entry through endocytosis via a mechanism of *ACE2* cleavage [14]. Another candidate receptor is the A disintegrin and metalloproteinase domain 17 protein (ADAM17) recognized by the immune system as a stress-response signal [66]. Like TMPRSS2, ADAM17 can also cleave *ACE2* but with a reduced viral invasion efficiency [67].

With respect to the role of these proteases in ME/CFS, a targeted gene expression study analyzed ADAM17 and other stress-response proteins [41]. This study did not report any differential expression of this protease between patients with ME/CFS and healthy controls. However, this study is likely to be affected by a low statistical power due to small sample sizes for both groups. In addition, one of the selected DNA methylation studies suggested a decrease in the DNA methylation levels of one ADAM17-related CpG probe in patients with ME/CFS [30].

Dipeptidyl peptidase-4 (DPP4), also known as the lymphocyte cell surface protein CD26, was found to be the main receptor for the Middle East respiratory syndrome-related coronavirus [68, 69]. In contrast to *ACE2*, this surface protein is highly abundant in PBCMs including CD4+ and CD8+ T cells [18]. Bioinformatic analysis also suggested a strong interaction potential between this protein and SARS-CoV-2 [70,71]. Finally, DPP4 inhibitors were found to be protective against severe COVID-19 in patients with diabetes mellitus when compared to RAAS blockers [72]. After initial concerns, this finding combined with others suggested an interesting therapeutic avenue against COVID-19 using DPP4 blockers [73].

Interestingly, there is evidence for an increased proportion of natural killer cells and T cells expressing DPP4/CD26+ in patients with ME/CFS [7, 74]. However, the number of DPP4/CD26 molecules was significantly reduced in T lymphocytes and natural killer cells of these patients [74]. If DPP4 is indeed a relevant receptor for immune-cell invasion by SARS-CoV-2, research about this receptor should be prioritized when analyzing PBCMs from patients with ME/CFS.

Sialic acids were also hypothesized as binding receptors used by SARS-CoV-2, as reported for other human coronaviruses [75]. These acids are highly expressed in the epithelium cells of the lungs and oral cavity [76]. *In vitro* and *in silico* studies demonstrated the same binding potential for SARS-CoV-2 [77, 78, 79]. However, the *ACE2* glycosylation inhibition studies suggested that sialic acids on *ACE2* receptor prevent

ACE2–virus interaction [80, 81]. Again, detailed research on these putative receptors could help to determine the health risk of patients with ME/CFS when infected by SARS-CoV-2.

It was suggested that the arousal state experienced by patients with ME/CFS protects them against microbial infections [82]. This suggestion came from a clinical trial where patients were treated with clonidine to decrease such a state. Treated patients got their symptoms worsened and had their inflammation markers increased during the trial. In contrast, basic epidemiological studies reported many patients with frequent viral infections and flu-like symptoms [3, 4, 83]. The question is how an infection by SARS-CoV-2 lies in this contrasting evidence. A possible answer can be given with the assistance of the so-called sustained arousal model of ME/CFS [84]. According to this model, a sustained arousal state promotes in the long-run deleterious alterations of different body systems, including the immune system. Similar prediction was made by a recent study discussing the natural history of ME/CFS [85]. If so, patients with longer disease durations are more likely to show these immunological alterations than patients at the early stages of the disease. However, we could not analyze the effect of disease duration on our results, because this variable was not available in the public data sets included in our meta-analyses.

Finally, our original idea was also to include a meta-analysis of *ACE/ACE2* data from published genome-wide association studies on ME/CFS [11, 32, 86, 87, 88]. However, we could not materialize this idea, because such studies did not make their data publicly available. Nevertheless, evidence is scarce for a putative role of *ACE/ACE2* polymorphisms on ME/CFS. Two studies reported many candidate SNPs for such association, but none was located in *ACE* or *ACE2* [11,86]. Two other studies did not find any significant SNPs associated with ME/CFS [32, 88]. The most optimistic study reported thousands of SNPs related to the disease [87]. However, this study did not perform all the basic quality control checks [89].

5. Conclusions

Notwithstanding the low expression of *ACE2* in PBMCs in general, there is evidence for a decreased expression of the gene in these cells from patients with ME/CFS. If PBMCs can qualitatively recreate what is occurring in the main cellular targets of SARS-CoV-2, then patients with this disease could be at a higher COVID-19 risk. In this regard, a recent preliminary report suggested that patients with ME/CFS got their symptoms worsened upon SARS-CoV-2 infection [91]. Altogether, these patients could be considered a priority group for vaccination against COVID-19, even though vaccines could trigger ME/CFS [92, 93] or even exacerbate ME/CFS symptoms as the case of the natural immunization by SARS-CoV-2. To further consolidate the existing evidence, future research should prioritize the collection of data from the main cellular targets in patients with ME/CFS. Further investigation should be also conducted on alternative SARS-CoV-2 receptors (i.e., DPP4 and sialic acids). At last, future research should also consider investigating putative sex differences in patients with ME/CFS given that, in general, men are more affected by COVID-19 than women [90].

Declarations

Author contribution statement

João Malato, André Fonseca, Anna D Grabowska, Luís Graça, Clara Cordeiro, Luís Nacul, Eliana M Lacerda, Jesus Castro-Marrero, Francisco Westermeier: Analyzed and interpreted the data; Wrote the paper.

Franziska Sotzny: Conceived and designed the experiments; Performed the experiments; Analyzed and interpreted the data; Contributed reagents, materials, analysis tools or data; Wrote the paper.

Sandra Bauer, Helma Freitag: Performed the experiments; Contributed reagents, materials, analysis tools or data; Wrote the paper.

Carmen Scheibenbogen: Analyzed and interpreted the data; Contributed reagents, materials, analysis tools or data; Wrote the paper.

Nuno Sepúlveda: Conceived and designed the experiments; Analyzed and interpreted the data; Wrote the paper.

Funding statement

João Malato and André Fonseca were fully funded by FCT – Fundação para a Ciência e Tecnologia, Portugal (ref.grant: SFRH/BD/149758/2019 and SFRH/BD/147629/2019, respectively). Nuno Sepúlveda and Clara Cordeiro were partially funded by FCT – Fundação para a Ciência e a Tecnologia, Portugal (ref. grant: UIDB/00006/2020). Luís Nacul and Eliana M Lacerda acknowledge the funding from the National Institute of Allergy and Infectious Diseases (NIAID) of the National Institutes of Health (NIH -Award Number: R01AI103629), and from the ME Association (Award number: PF8947) for their studies on ME/CFS.

Data availability statement

Data are available from the GEO database under the accession number GSE59489, GSE93266, GSE111183, GSE156792, GSE153667, GSE14577.

Declaration of interests statement

The authors declare no conflict of interest.

Additional information

Supplementary content related to this article has been published online at <https://doi.org/10.1016/j.heliyon.2021.e07665>.

References

- [1] K. Fukuda, S.E. Straus, I. Hickie, M.C. Sharpe, J.G. Dobbins, A. Komaroff, The chronic fatigue syndrome: a comprehensive approach to its definition and study, *Ann. Intern. Med.* 121 (1994) 953–959.
- [2] B.M. Carruthers, A.K. Jain, K.L. De Meirleir, D.L. Peterson, N.G. Klimas, A.M. Lemer, A.C. Bested, P. Flor-Henry, P. Joshi, A.C.P. Powles, J.A. Sherkey, M.I. Van de Sande, Myalgic encephalomyelitis/chronic fatigue syndrome: clinical working case definition, diagnostic and treatment protocols, *J. Chronic Fatigue Syndrome* 11 (2003) 7–115.
- [3] S.C. Johnston, D.R. Staines, S.M. Marshall-Gradisnik, Epidemiological characteristics of chronic fatigue syndrome/myalgic encephalomyelitis in Australian patients, *Clin. Epidemiol.* 8 (2016) 97–107.
- [4] L. Chu, L.J. Valencia, D.W. Garvert, J.G. Montoya, Onset patterns and course of myalgic encephalomyelitis/chronic fatigue syndrome, *Front. Pediatr.* 7 (2019) 12.
- [5] S. Raza, Z. Nora-Krukke, N. Henning, E. Eliassen, E. Shikova, T. Harrer, C. Scheibenbogen, M. Murovska, B.K. Prusty, Chronic viral infections in myalgic encephalomyelitis/chronic fatigue syndrome (ME/CFS), *J. Transl. Med.* 16 (2018), 268.
- [6] M.E. Ariza, Myalgic encephalomyelitis/chronic fatigue syndrome: the human herpesviruses are back!, *Biomolecules* 11 (2021) 1–17.
- [7] N.G. Klimas, F.R. Salvato, R. Morgan, M.A. Fletcher, Immunologic abnormalities in chronic fatigue syndrome, *J. Clin. Microbiol.* 28 (1990) 1403–1410.
- [8] L. Lorusso, S.V. Mikhaylova, E. Capelli, D. Ferrari, G.K. Ngonga, G. Ricevuti, Immunological aspects of chronic fatigue syndrome, *Autoimmun. Rev.* 8 (2009) 287–291.
- [9] E.W. Brenu, M.L. van Driel, D.R. Staines, K.J. Ashton, S.B. Ramos, J. Keane, N.G. Klimas, S.M. Marshall-Gradisnik, Immunological abnormalities as potential biomarkers in chronic fatigue syndrome/myalgic encephalomyelitis, *J. Transl. Med.* 9 (2011), 81.
- [10] J.R. Kerr, Gene profiling of patients with chronic fatigue syndrome/myalgic encephalomyelitis, *Curr. Rheumatol. Rep.* 10 (2008) 482–491.
- [11] A.K. Smith, H. Fang, T. Whistler, E.R. Unger, M.S. Rajeevan, Convergent genomic studies identify association of GRIK2 and NPAS2 with chronic fatigue syndrome, *Neuropsychobiology* 64 (2011) 183–194.
- [12] W. Li, M.J. Moore, N. Vaslieva, J. Sui, S.K. Wong, M.A. Berne, M. Somasundaran, J.L. Sullivan, K. Luzuriaga, T.C. Greeneugh, H. Choe, M. Farzan, Angiotensin-converting enzyme 2 is a functional receptor for the SARS coronavirus, *Nature* 426 (2003) 450–454.
- [13] X.Y. Ge, J.L. Li, X. Lou Yang, A.A. Chmura, G. Zhu, J.H. Epstein, J.K. Mazet, B. Hu, W. Zhang, C. Peng, Y.J. Zhang, C.M. Luo, B. Tan, N. Wang, Y. Zhu, G. Cramer, S.Y. Zhang, L.F. Wang, P. Daszak, Z.L. Shi, Isolation and characterization of a bat SARS-like coronavirus that uses the ACE2 receptor, *Nature* 503 (2013) 535–538.

- [14] M. Hoffmann, H. Kleine-Weber, S. Schroeder, N. Krüger, T. Herrler, S. Erichsen, T.S. Schiergens, G. Herrler, N.H. Wu, A. Nitsche, M.A. Müller, C. Drosten, S. Pöhlmann, SARS-CoV-2 cell entry depends on ACE2 and TMPRSS2 and is blocked by a clinically proven protease inhibitor, *Cell* 181 (2020) 271–280.e8.
- [15] I. Hamming, W. Timens, M.L.C. Bulthuis, A.T. Lely, G.J. Navis, H. van Goor, Tissue distribution of ACE2 protein, the functional receptor for SARS coronavirus. A first step in understanding SARS pathogenesis, *J. Pathol.* 203 (2004) 631–637.
- [16] K.F. To, A.W.I. Lo, Exploring the pathogenesis of severe acute respiratory syndrome (SARS): the tissue distribution of the coronavirus (SARS-CoV) and its putative receptor, angiotensin-converting enzyme 2 (ACE2), *J. Pathol.* 203 (2004) 740–743.
- [17] M.Y. Li, L. Li, Y. Zhang, X.S. Wang, Expression of the SARS-CoV-2 cell receptor gene ACE2 in a wide variety of human tissues, *Infect. Dis. Poverty* 9 (2020), 45.
- [18] U. Radzikowska, M. Ding, G. Tan, D. Zhakparov, Y. Peng, P. Wawrzyniak, M. Wang, S. Li, H. Morita, C. Altunbulakli, M. Reiger, A.U. Neumann, N. Lunjani, C. Traidl-Hoffmann, K.C. Nadeau, L. O'Mahony, C. Akdis, M. Sokolowska, Distribution of ACE2, CD147, CD26, and other SARS-CoV-2 associated molecules in tissues and immune cells in health and in asthma, COPD, obesity, hypertension, and COVID-19 risk factors, *Allergy* 75 (2020) 2829–2845.
- [19] M. Rutkowska-Zapala, M. Suski, R. Szatanek, M. Lenart, K. Weglarczyk, R. Olszanecki, T. Grodzicki, M. Strach, J. Gasowski, M. Siedlar, Human monocyte subsets exhibit divergent angiotensin I-converting activity, *Clin. Exp. Immunol.* 181 (2015) 126–132.
- [20] X. Song, W. Hu, H. Yu, L. Zhao, Y. Zhao, X. Zhao, H.H. Xue, Y. Zhao, Little to no expression of angiotensin-converting enzyme-2 on most human peripheral blood immune cells but highly expressed on tissue macrophages, *Cytometry* (2020) 1–10.
- [21] S.R. Tipnis, N.M. Hooper, R. Hyde, E. Karran, G. Christie, A.J. Turner, A human homolog of angiotensin-converting enzyme: cloning and functional expression as a captopril-insensitive carboxypeptidase, *J. Biol. Chem.* 275 (2000) 33238–33243.
- [22] F. Westermeyer, M. Bustamante, M. Pavez, L. García, M. Chiong, M.P. Ocaranza, S. Lavandero, Novel players in cardioprotection: insulin like growth factor-1, angiotensin-(1-7) and angiotensin-(1-9), *Pharmacol. Res.* 101 (2015) 41–55.
- [23] P. Pagliaro, C. Penna, ACE/ACE2 ratio: a key also in 2019 coronavirus disease (Covid-19)? *Front. Med.* 7 (2020) 335.
- [24] A.H. Sawalha, M. Zhao, P. Coit, Q. Lu, Epigenetic dysregulation of ACE2 and interferon-regulated genes might suggest increased COVID-19 susceptibility and severity in lupus patients, *Clin. Immunol.* 215 (2020) 108410.
- [25] J. Blomberg, C.G. Gottfries, A. Elfaitouri, M. Rizwan, A. Rosen, Infection elicited autoimmunity and Myalgic encephalomyelitis/chronic fatigue syndrome: an explanatory model, *Front. Immunol.* 9 (2018), 229.
- [26] D.F.H. Pheby, D. Araja, U. Berkis, E. Brenna, J. Cullinan, J.-D. de Korwin, L. Gitto, D.A. Hughes, R.M. Hunter, D. Trepel, X. Wang-Steverding, The development of a consistent europe-wide approach to investigating the economic impact of myalgic encephalomyelitis (ME/CFS): a report from the European Network on ME/CFS (EUROMENE), *Healthcare* 8 (2020) 88.
- [27] E.W. Brenu, D.R. Staines, S.M. Marshall-Gradisnik, Methylation profile of CD4+ T cells in chronic fatigue syndrome/myalgic encephalomyelitis, *J. Clin. Cell. Immunol.* 5 (2014) 1–14.
- [28] W.C. De Vega, S.D. Vernon, P.O. McGowan, DNA methylation modifications associated with Chronic Fatigue Syndrome, *PLoS One* 9 (2014), e104757.
- [29] W.C. De Vega, S. Herrera, S.D. Vernon, P.O. McGowan, Epigenetic modifications and glucocorticoid sensitivity in myalgic encephalomyelitis/chronic fatigue syndrome (ME/CFS), *BMC Med. Genomics* 10 (2017), 11.
- [30] M.S. Trivedi, E. Oltra, L. Sarria, N. Rose, V. Beljanski, M.A. Fletcher, N.G. Klimas, L. Nathanson, Identification of myalgic encephalomyelitis/chronic fatigue syndrome-associated DNA methylation patterns, *PLoS One* 13 (2018), e0201066.
- [31] E. Almenar-Pérez, T. Ovejero, T. Sánchez-Pito, J.A. Espejo, L. Nathanson, E. Oltra, Epigenetic components of myalgic encephalomyelitis/chronic fatigue syndrome uncover potential transposable element activation, *Clin. Ther* 41 (2019) 675–698.
- [32] S. Herrera, W.C. de Vega, D. Ashbrook, S.D. Vernon, P.O. McGowan, Genome-epigenome interactions associated with myalgic encephalomyelitis/chronic fatigue syndrome, *Epigenetics* 13 (2018) 1174–1190.
- [33] A.M. Helliwell, E.C. Sweetman, P.A. Stockwell, C.D. Edgar, A. Chatterjee, W.P. Tate, Changes in DNA methylation profiles of myalgic encephalomyelitis/chronic fatigue syndrome patients reflect systemic dysfunctions, *Clin. Epigenet.* 12 (2020) 167.
- [34] S. Dedeurwaerder, M. Defrance, M. Bizet, E. Calonne, G. Bontempi, F.F. Fuks, A comprehensive overview of Infinium HumanMethylation 450 data processing, *Brief. Bioinform.* 15 (2013) 929–941.
- [35] P. Du, X. Zhang, C.C. Huang, N. Jafari, W.A. Kibbe, L. Hou, S.M. Lin, Comparison of Beta-value and M-value methods for quantifying methylation levels by microarray analysis, *BMC Bioinf.* 11 (2010), 587.
- [36] Y. Benjamini, Y. Hochberg, Controlling the false discovery rate: a practical and powerful approach to multiple testing, *J. R. Stat. Soc. Ser. B* 57 (1995) 289–300.
- [37] M.J. Aryee, A.E. Jaffe, H. Corrada-Bravo, C. Ladd-Acosta, A.P. Feinberg, K.D. Hansen, R.A. Irizarry, Minfi: a flexible and comprehensive Bioconductor package for the analysis of Infinium DNA methylation microarrays, *Bioinformatics* 30 (2014) 1363–1369.
- [38] T. Whistler, J.F. Jones, E.R. Unger, S.D. Vernon, Exercise responsive genes measured in peripheral blood of women with Chronic Fatigue Syndrome and matched control subjects, *BMC Physiol.* 5 (2005), 5.
- [39] N. Kaushik, D. Fear, S.C.M. Richards, C.R. McDermott, E.F. Nuwaysir, P. Kellam, T.J. Harrison, R.J. Wilkinson, D.A.J. Tyrrell, S.T. Holgate, J.R. Kerr, Gene expression in peripheral blood mononuclear cells from patients with chronic fatigue syndrome, *J. Clin. Pathol.* 58 (2005) 826–832.
- [40] J.R. Kerr, R. Petty, B. Burke, J. Gough, D. Fear, L.I. Sinclair, D.L. Matthey, S.C.M. Richards, J. Montgomery, D.A. Baldwin, P. Kellam, T.J. Harrison, G.E. Griffin, J. Main, D. Enlander, D.J. Nutt, S.T. Holgate, Gene expression subtypes in patients with chronic fatigue syndrome/myalgic encephalomyelitis, *J. Infect. Dis.* 197 (2008) 1171–1184.
- [41] T. Saiki, T. Kawai, K. Morita, M. Ohta, T. Saito, K. Rokutan, N. Ban, Identification of marker genes for differential diagnosis of chronic fatigue syndrome, *Mol. Med* 14 (2008) 599–607.
- [42] T. Pietrangolo, R. Mancinelli, L. Toniolo, G. Montanari, J. Vecchiet, G. Fanò, S. Fulle, Transcription profile analysis of vastus lateralis muscle from patients with chronic fatigue syndrome, *Int. J. Immunopathol. Pharmacol.* 22 (2009) 795–807.
- [43] J.W. Gow, S. Hagan, P. Herzyk, C. Cannon, P.O. Behan, A. Chaudhuri, A gene signature for post-infectious chronic fatigue syndrome, *BMC Med. Genomics* 2 (2009), 38.
- [44] M.G. Jeffrey, L. Nathanson, K. Aenle, Z.M. Barnes, M. Baig, G. Broderick, N.G. Klimas, M.A. Fletcher, T.J.A. Craddock, Treatment avenues in myalgic encephalomyelitis/chronic fatigue syndrome: a split-gender pharmacogenomic study of gene-expression modules, *Clin. Ther* 41 (2019) 815–835.e6.
- [45] A. Brazma, P. Hingamp, J. Quackenbush, G. Sherlock, P. Spellman, C. Stoeckert, J. Aach, W. Ansorge, C.A. Ball, H.C. Causton, T. Gaasterland, P. Glenisson, F.C.P. Holstege, I.F. Kim, V. Markowitz, J.C. Matese, H. Parkinson, A. Robinson, U. Sarkans, S. Schulze-Kremer, J. Stewart, R. Taylor, J. Vilo, M. Vingron, Minimum information about a microarray experiment (MIAME) - toward standards for microarray data, *Nat. Genet.* 29 (2001) 365–371.
- [46] S. Galbraith, B. Cameron, H. Li, D. Lau, U. Vollmer-Conna, A.R. Lloyd, Peripheral blood gene expression in postinfective fatigue syndrome following from three different triggering infections, *J. Infect. Dis.* 204 (2011) 1632–1640.
- [47] S.D. Vernon, E.R. Unger, I.M. Dimulescu, M. Rajeevan, W.C. Reeves, Utility of the blood for gene expression profiling and biomarker discovery in chronic fatigue syndrome, *Dis. Markers* 18 (2002) 193–199.
- [48] C.B. Nguyen, L. Alsøe, J.M. Lindvall, D. Sulheim, E. Fagermoen, A. Winger, M. Kaarbo, H. Nilsen, V.B. Wyller, Whole blood gene expression in adolescent chronic fatigue syndrome: an exploratory cross-sectional study suggesting altered B cell differentiation and survival, *J. Transl. Med.* 15 (2017), 102.
- [49] J. Bouquet, J.L. Gardy, S. Brown, J. Pfeil, R.R. Miller, M. Morshed, A. Avina-Zubieta, K. Shojania, M. McCabe, S. Parker, M. Uyaguari, S. Federman, P. Tang, T. Steiner, M. Otterstater, R. Holt, R. Moore, C.Y. Chiu, D.M. Patrick, RNA-seq analysis of gene expression, viral pathogen, and B-cell/T-cell receptor signatures in complex chronic disease, *Clin. Infect. Dis.* 64 (2017) 476–481.
- [50] J. Bouquet, T. Li, J.L. Gardy, X. Kang, S. Stevens, J. Stevens, M. VanNess, C. Snell, J. Potts, R.R. Miller, M. Morshed, M. McCabe, S. Parker, M. Uyaguari, P. Tang, T. Steiner, W.S. Chan, A.M. De Souza, A. Mattman, D.M. Patrick, C.Y. Chiu, Whole blood human transcriptome and virome analysis of ME/CFS patients experiencing post-exertional malaise following cardiopulmonary exercise testing, *PLoS One* 14 (2019), e0212193.
- [51] E. Sweetman, M. Ryan, C. Edgar, A. Mackay, R. Vallings, W. Tate, Changes in the transcriptome of circulating immune cells of a New Zealand cohort with myalgic encephalomyelitis/chronic fatigue syndrome, *Int. J. Immunopathol. Pharmacol.* 33 (2019) 1–8.
- [52] R.P.H. Rajmakers, A.F.M. Jansen, S.P. Keijmel, R. Ter Horst, M.E. Roerink, B. Novakovic, L.A.B. Joosten, J.W.M. Van Der Meer, M.G. Netea, C.P. Bleeker-Rovers, A possible role for mitochondrial-derived peptides humanin and MOTS-c in patients with Q fever fatigue syndrome and chronic fatigue syndrome, *J. Transl. Med.* 17 (2019), 157.
- [53] A. Conesa, P. Madrigal, S. Tarazona, D. Gomez-Cabrero, A. Cervera, A. McPherson, M.W. Szczesniak, D.J. Gaffney, L.L. ELO, X. Zhang, A. Mortazavi, A survey of best practices for RNA-seq data analysis, *Genome Biol.* 17 (2016), 13.
- [54] J. Hartung, G. Knapp, B.K. Sinha, *Statistical Meta-Analysis with Applications*, first ed., John Wiley & Sons, New Jersey, 2008.
- [55] Ö. Asar, O. Ilk, O. Dag, Estimating Box-Cox power transformation parameter via goodness-of-fit tests, *Commun. Stat. Simulat. Comput.* 46 (2017) 91–105.
- [56] P.K. Datta, F. Liu, T. Fischer, J. Rappaport, X. Qin, SARS-CoV-2 pandemic and research gaps: understanding SARS-CoV-2 interaction with the ACE2 receptor and implications for therapy, *Theranostics* 10 (2020) 7448–7464.
- [57] P. Verdecchia, C. Cavallini, A. Spanevello, F. Angeli, The pivotal link between ACE2 deficiency and SARS-CoV-2 infection, *Eur. J. Intern. Med.* 76 (2020) 14–20.
- [58] I.C. Gerling, R.A. Ahokas, G. Kamalov, W. Zhao, S.K. Bhattacharya, Y. Sun, K.T. Weber, Gene expression profiles of peripheral blood mononuclear cells reveal transcriptional signatures as novel biomarkers of cardiac remodeling in rats with aldosteronism and hypertensive heart disease, *JACC Hear. Fail.* 1 (2013) 469–476.
- [59] T. Takamura, M. Honda, Y. Sakai, H. Ando, A. Shimizu, T. Ota, M. Sakurai, H. Misu, S. Kurita, N. Matsuzawa-Nagata, M. Uchikata, S. Nakamura, R. Matoba, M. Tanino, Kichi Matsubara, S. Kaneko, Gene expression profiles in peripheral blood mononuclear cells reflect the pathophysiology of type 2 diabetes, *Biochem. Biophys. Res. Commun.* 361 (2007) 379–384.
- [60] F.S. Manoel-Caetano, D.J. Xavier, A.F. Evangelista, P. Takahashi, C.V. Collares, D. Puthier, M.C. Foss-Freitas, M.C. Foss, E.A. Donadi, G.A. Passos, E.T. Sakamoto-Hojo, Gene expression profiles displayed by peripheral blood mononuclear cells from patients with type 2 diabetes mellitus focusing on biological processes implicated on the pathogenesis of the disease, *Gene* 511 (2012) 151–160.
- [61] M.Z. Tay, C.M. Poh, L. Rénia, P.A. MacAry, L.F.P. Ng, The trinity of COVID-19: immunity, inflammation and intervention, *Nat. Rev. Immunol.* 20 (2020) 363–374.
- [62] A.C. Codo, G.G. Davanzo, L.B. de Monteiro, G.F. de Souza, S.P. Muraro,

- J.V. Virgilio-da-Silva, J.S. Prodonoff, V.C. Carregari, C.A.O. de Biagi Junior, F. Crunfli, J.L. Jimenez Restrepo, P.H. Vendramini, G. Reis-de-Oliveira, K. Bispo dos Santos, D.A. Toledo-Teixeira, P.L. Parise, M.C. Martini, R.E. Marques, H.R. Carmo, A. Borin, L.D. Coimbra, V.O. Boldrini, N.S. Brunetti, A.S. Vieira, E. Mansour, R.G. Ulaf, A.F. Bernardes, T.A. Nunes, L.C. Ribeiro, A.C. Palma, M.V. Agrela, M.L. Moretti, A.C. Sposito, F.B. Pereira, L.A. Velloso, M.A.R. Vinolo, A. Damasio, J.L. Proença-Módena, R.F. Carvalho, M.A. Mori, D. Martins-de-Souza, H.I. Nakaya, A.S. Farias, P.M. Moraes-Vieira, Elevated glucose levels favor SARS-CoV-2 infection and monocyte response through a HIF-1 α /Glycolysis-Dependent Axis, *Cell Metabol.* 32 (2020) 437–446.e5.
- [63] W. Sungnak, N. Huang, C. Bécaivin, M. Berg, R. Queen, M. Litvinukova, C. Talavera-López, H. Maatz, D. Reichart, F. Sampaziotis, K.B. Worlock, M. Yoshida, J.L. Barnes, N.E. Banovich, P. Barbry, A. Brazma, J. Collin, T.J. Desai, T.E. Duong, O. Eickelberg, C. Falk, M. Farzan, I. Glass, R.K. Gupta, M. Haniffa, P. Horvath, N. Hubner, D. Hung, N. Kaminski, M. Krasnow, J.A. Kropski, M. Kuhnemund, M. Lako, H. Lee, S. Leroy, S. Linnarson, J. Lundeberg, K.B. Meyer, M. Miao, A.V. Misharin, M.C. Nawijn, M.Z. Nikolic, M. Nosedá, J. Ordovas-Montanes, G.Y. Oudit, D. Pe'er, J. Powell, S. Quake, J. Rajagopal, P.R. Tata, E.L. Rawlins, A. Regev, P.A. Reyfman, O. Rozenblatt-Rosen, K. Saeb-Parsy, C. Samakovlis, H.B. Schiller, J.L. Schultze, M.A. Seibold, C.E. Seidman, J.G. Seidman, A.K. Shalek, D. Shepherd, J. Spence, A. Spira, X. Sun, S.A. Teichmann, F.J. Theis, A.M. Tsankov, L. Vallier, M. van den Berge, J. Whitsett, R. Xavier, Y. Xu, L.E. Zaragosi, D. Zerti, H. Zhang, C. Zhang, M. Rojas, F. Figueiredo, SARS-CoV-2 entry factors are highly expressed in nasal epithelial cells together with innate immune genes, *Nat. Med.* 26 (2020) 681–687.
- [64] I. Glowacka, S. Bertram, M.A. Müller, P. Allen, E. Soilleux, S. Pfefferle, I. Steffen, T.S. Tsegaye, Y. He, K. Gnirss, D. Niemyer, H. Schneider, C. Drosten, S. Pohlmann, Evidence that TMPRSS2 activates the severe acute respiratory syndrome coronavirus spike protein for membrane fusion and reduces viral control by the humoral immune response, *J. Virol.* 85 (2011) 4122–4134.
- [65] S. Matsuyama, N. Nagata, K. Shirato, M. Kawase, M. Takeda, F. Taguchi, Efficient activation of the severe acute respiratory syndrome coronavirus spike protein by the transmembrane protease TMPRSS2, *J. Virol.* 84 (2010) 12658–12664.
- [66] S. Düsterhöft, J. Lokau, C. Garbers, The metalloprotease ADAM17 in inflammation and cancer, *Pathol. Res. Pract.* 215 (2019), 152410.
- [67] A. Heurich, H. Hofmann-Winkler, S. Gierer, T. Liepold, O. Jahn, S. Pohlmann, TMPRSS2 and ADAM17 cleave ACE2 differentially and only proteolysis by TMPRSS2 augments entry driven by the severe acute respiratory syndrome coronavirus spike protein, *J. Virol.* 88 (2014) 1293–1307.
- [68] N. van Doremalen, K.L. Miazgowiec, S. Milne-Price, T. Bushmaker, S. Robertson, D. Scott, J. Kinne, J.S. McLellan, J. Zhu, V.J. Munster, Host species restriction of Middle East respiratory syndrome coronavirus through its receptor, dipeptidyl peptidase 4, *J. Virol.* 88 (2014) 9220–9232.
- [69] W. Widagdo, N.M.A. Okba, W. Li, A. de Jong, R.L. de Swart, L. Begeman, J.M.A. van den Brand, B.-J. Bosch, B.L. Haagmans, Species-specific colocalization of Middle East respiratory syndrome coronavirus attachment and entry receptors, *J. Virol.* 93 (2019) e00107–19.
- [70] Y. Li, Z. Zhang, L. Yang, X. Lian, Y. Xie, S. Li, S. Xin, P. Cao, J. Lu, The MERS-CoV receptor DPP4 as a candidate binding target of the SARS-CoV-2 spike, *IScience* 23 (2020), 101160.
- [71] N. Vankadari, J.A. Wilce, Emerging WuHan (COVID-19) coronavirus: glycan shield and structure prediction of spike glycoprotein and its interaction with human CD26, *Emerg. Microb. Infect.* 9 (2020) 601–604.
- [72] S.Y. Rhee, J. Lee, H. Nam, D.S. Kyoung, D.W. Shin, D.J. Kim, Effects of a DPP-4 inhibitor and RAS blockade on clinical outcomes of patients with diabetes and COVID-19, *Diabetes Metab. J.* 45 (2021) 251–259.
- [73] A.J. Scheen, DPP-4 inhibition and COVID-19: from initial concerns to recent expectations, *Diabetes Metab.* 47 (2021), 101213.
- [74] M.A. Fletcher, X.R. Zeng, K. Maher, S. Levis, B. Hurwitz, M. Antoni, G. Broderick, N.G. Klimas, Biomarkers in chronic fatigue syndrome: evaluation of natural killer cell function and dipeptidyl peptidase IV/CD26, *PLoS One* 5 (2010), e10817.
- [75] X.-L. Sun, The role of cell surface sialic acids for SARS-CoV-2 infection, *Glycobiology* (2021), cwab032.
- [76] B.W. Cross, S. Ruhl, Glycan recognition at the saliva – oral microbiome interface, *Cell. Immunol.* 333 (2018) 19–33.
- [77] E. Milanetti, M. Miotto, L. Di Rienzo, M. Monti, G. Gosti, G. Ruocco, In-Silico evidence for two receptors based strategy of SARS-CoV-2, *BioRxiv* (2020) 6197, 2020.03.24.
- [78] M. Awasthi, S. Gulati, D.P. Sarkar, S. Tiwari, S. Kateriya, P. Ranjan, S.K. Verma, The sialoside-binding pocket of SARS-CoV-2 spike glycoprotein structurally resembles MERS-CoV, *Viruses* 12 (2020), 909.
- [79] A.N. Baker, S.J. Richards, C.S. Guy, T.R. Congdon, M. Hasan, A.J. Zwetsloot, A. Gallo, J.R. Lewandowski, P.J. Stansfeld, A. Straube, M. Walker, S. Chessa, G. Pergolizzi, S. Dedola, R.A. Field, M.I. Gibson, The SARS-CoV-2 spike protein binds sialic acids and enables rapid detection in a lateral flow point of care diagnostic device, *ACS Cent. Sci.* 6 (2020) 2046–2052.
- [80] H. Chu, B. Hu, X. Huang, Y. Chai, D. Zhou, Y. Wang, H. Shuai, D. Yang, Y. Hou, X. Zhang, T.T.T. Yuen, J.P. Cai, A.J. Zhang, J. Zhou, S. Yuan, K.K.W. To, I.H.Y. Chan, K.Y. Sit, D.C.C. Foo, I.Y.H. Wong, A.T.L. Ng, T.T. Cheung, S.Y.K. Law, W.K. Au, M.A. Brindley, Z. Chen, K.H. Kok, J.F.W. Chan, K.Y. Yuen, Host and viral determinants for efficient SARS-CoV-2 infection of the human lung, *Nat. Commun.* 12 (2021), 134.
- [81] Q. Yang, T.A. Hughes, A. Kelkar, X. Yu, K. Cheng, S.J. Park, W.C. Huang, J.F. Lovell, S. Neelamegham, Inhibition of SARS-CoV-2 viral entry upon blocking N- and O-glycan elaboration, *Elife* 9 (2020) 1–44.
- [82] D. Sulheim, E. Fagermoen, A. Winger, A.M. Andersen, K. Godang, F. Müller, P.C. Rowe, J.P. Saul, E. Skovlund, M.G. Oie, V.W. Bruun, Disease mechanisms and clonidine treatment in adolescent chronic fatigue syndrome a combined cross-sectional and randomized clinical trial, *JAMA Psychiatr.* 168 (2014) 351–360.
- [83] J. Slomko, J.L. Newton, S. Kujawski, M. Tafil-Klawe, J. Klawe, D. Staines, S. Marshall-Gradisnik, P. Zalewski, Prevalence and characteristics of chronic fatigue syndrome/myalgic encephalomyelitis (CFS/ME) in Poland: a cross-sectional study, *BMJ Open* 9 (2019), e023955.
- [84] V.B. Wyller, H.R. Eriksen, K. Malterud, Can sustained arousal explain the chronic fatigue syndrome? *Behav. Brain Funct.* 5 (2009) 1–10.
- [85] L. Nacul, S. O'Boyle, L. Palla, F.E. Nacul, K. Mudie, C.C. Kingdon, J.M. Cliff, T.G. Clark, H.M. Dockrell, E.M. Lacerda, How myalgic encephalomyelitis/chronic fatigue syndrome (ME/CFS) progresses: the natural history of ME/CFS, *Front. Neurol.* 11 (2020), 826.
- [86] K.A. Schlauch, S.F. Khaiboullina, K.L. De Meirleir, S. Rawat, J. Petereit, A.A. Rizvanov, N. Blatt, T. Mijatovic, D. Kulick, A. Palotás, V.C. Lombardi, Genome-wide association analysis identifies genetic variations in subjects with myalgic encephalomyelitis/chronic fatigue syndrome, *Transl. Psychiatry* 6 (2016), e730.
- [87] M. Perez, R. Jaundoo, K. Hilton, A. Del Alamo, K. Gemayel, N.G. Klimas, T.J.A. Craddock, L. Nathanson, Genetic predisposition for immune system, hormone, and metabolic dysfunction in myalgic encephalomyelitis/chronic fatigue syndrome: a pilot study, *Front. Psychiatr.* 7 (2019), 206.
- [88] J.J. Dibble, S.J. McGrath, C.P. Ponting, Genetic risk factors of ME/CFS: a critical review, *Hum. Mol. Genet.* 29 (2020) R118–R125.
- [89] A.D. Grabowska, E.M. Lacerda, L. Nacul, N. Sepúlveda, Review of the quality control checks performed by current genome-wide and targeted-genome association studies on myalgic encephalomyelitis/chronic fatigue syndrome, *Front. Psychiatr.* 8 (2020), 293.
- [90] N. Gadi, S.C. Wu, A.P. Spihlman, V.R. Moulton, What's sex got to do with COVID-19? Gender-based differences in the host immune response to coronaviruses, *Front. Immunol.* 11 (2020), 2147.
- [91] <http://www.meaction.net/wp-content/uploads/2021/04/Report-on-the-impact-of-Covid-19-on-ME.pdf>. (Accessed 1 August 2021).
- [92] R.K. Gherardi, G. Crépeaux, F.J. Authier, Myalgia and chronic fatigue syndrome following immunization: macrophagic myofasciitis and animal studies support linkage to aluminum adjuvant persistency and diffusion in the immune system, *Autoimmun. Rev.* 18 (2019) 691–705.
- [93] J. Phelan, A.D. Grabowska, N. Sepúlveda, A potential antigenic mimicry between viral and human proteins linking Myalgic Encephalomyelitis/Chronic Fatigue Syndrome (ME/CFS) with autoimmunity: the case of HPV immunization, *Autoimmun. Rev.* 19 (2020), 102487.