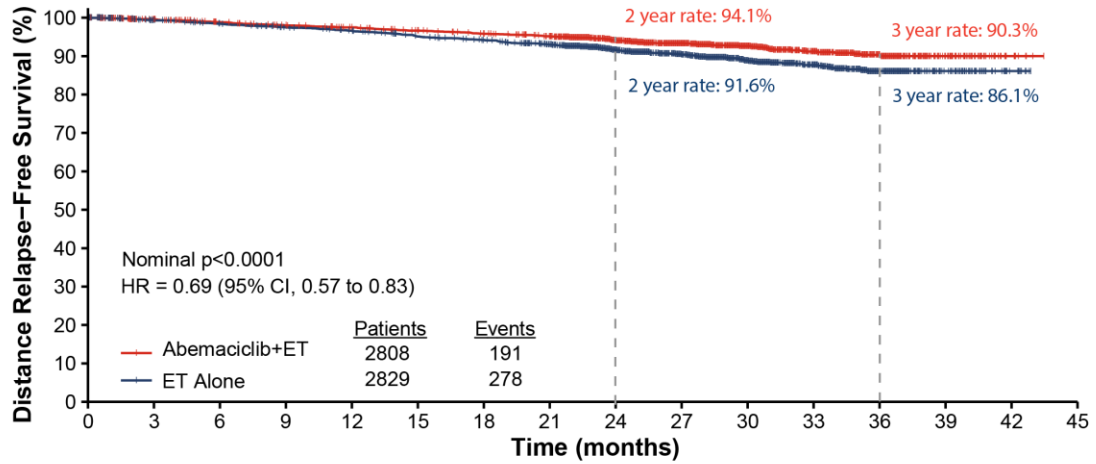


Supplementary Figure S4. (A) Kaplan-Meier curve of distant relapse-free survival (DRFS) in the intent-to-treat (ITT) population at AFU1. Abbreviation: CI=confidence interval; ET=endocrine therapy; HR=hazard ratio
(B) Forest Plot of DRFS in prespecified subgroups at AFU1. Hazard ratio (HR) estimates are depicted as diamonds, 95% confidence intervals (CIs) are shown by the crossing horizontal lines. Abbreviations: ECOG PS=Eastern Cooperative Oncology Group Performance Status, ET=endocrine therapy, Pos=Positive

A.



Number at risk	0	3	6	9	12	15	18	21	24	27	30	33	36	39	42	45
Abemaciclib + ET	2808	2684	2629	2595	2566	2529	2497	2455	1990	1300	930	530	281	68	8	0
ET Alone	2829	2704	2660	2622	2591	2535	2499	2427	1955	1287	924	537	287	66	10	0

B.

