

Supplementary figures

Figure A1: Flowchart

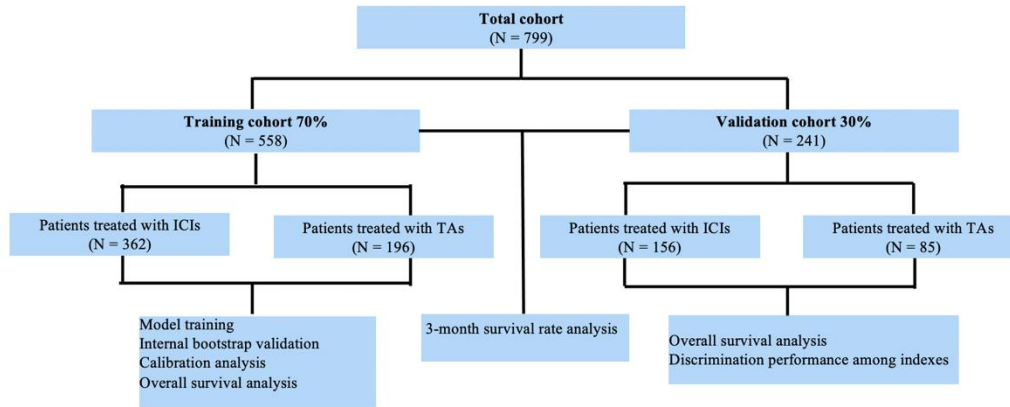
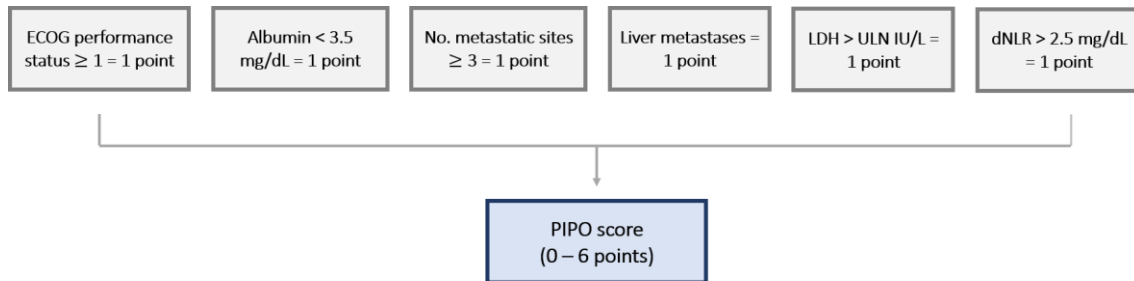


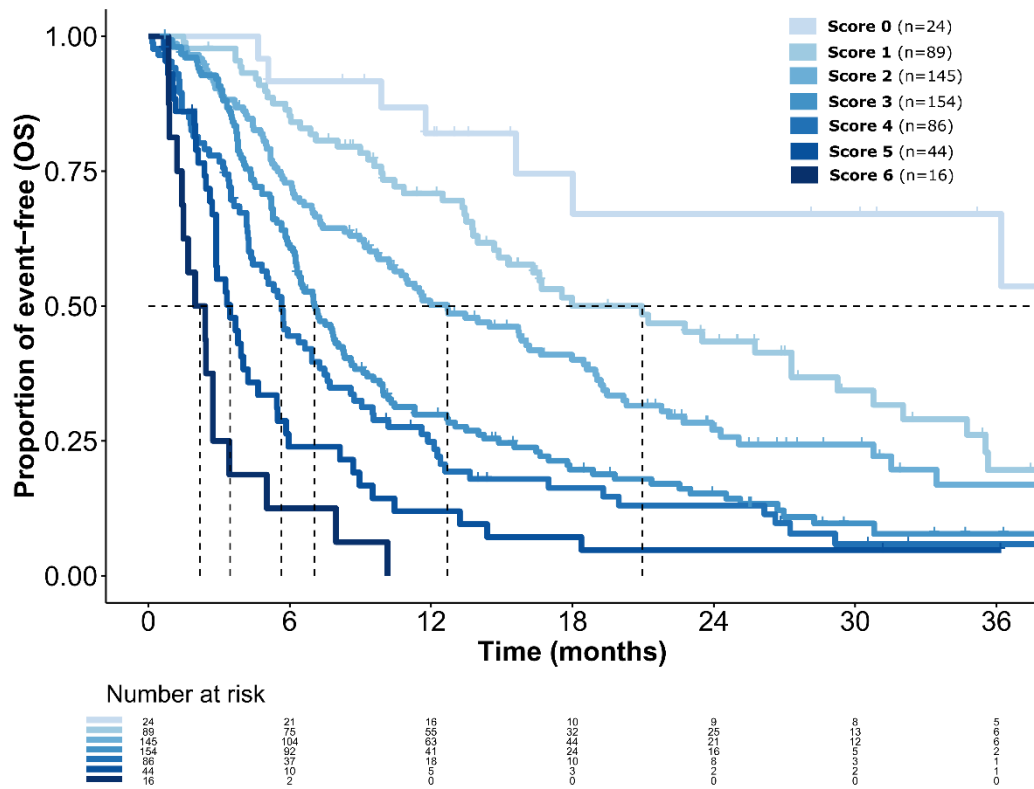
Figure A2: Phase I prognostic online (PIPO) score



PIPO score provides an ordinal classification that allocated patients in a risk group. The score is based on 6 risk factors. Each factor has the same weight.

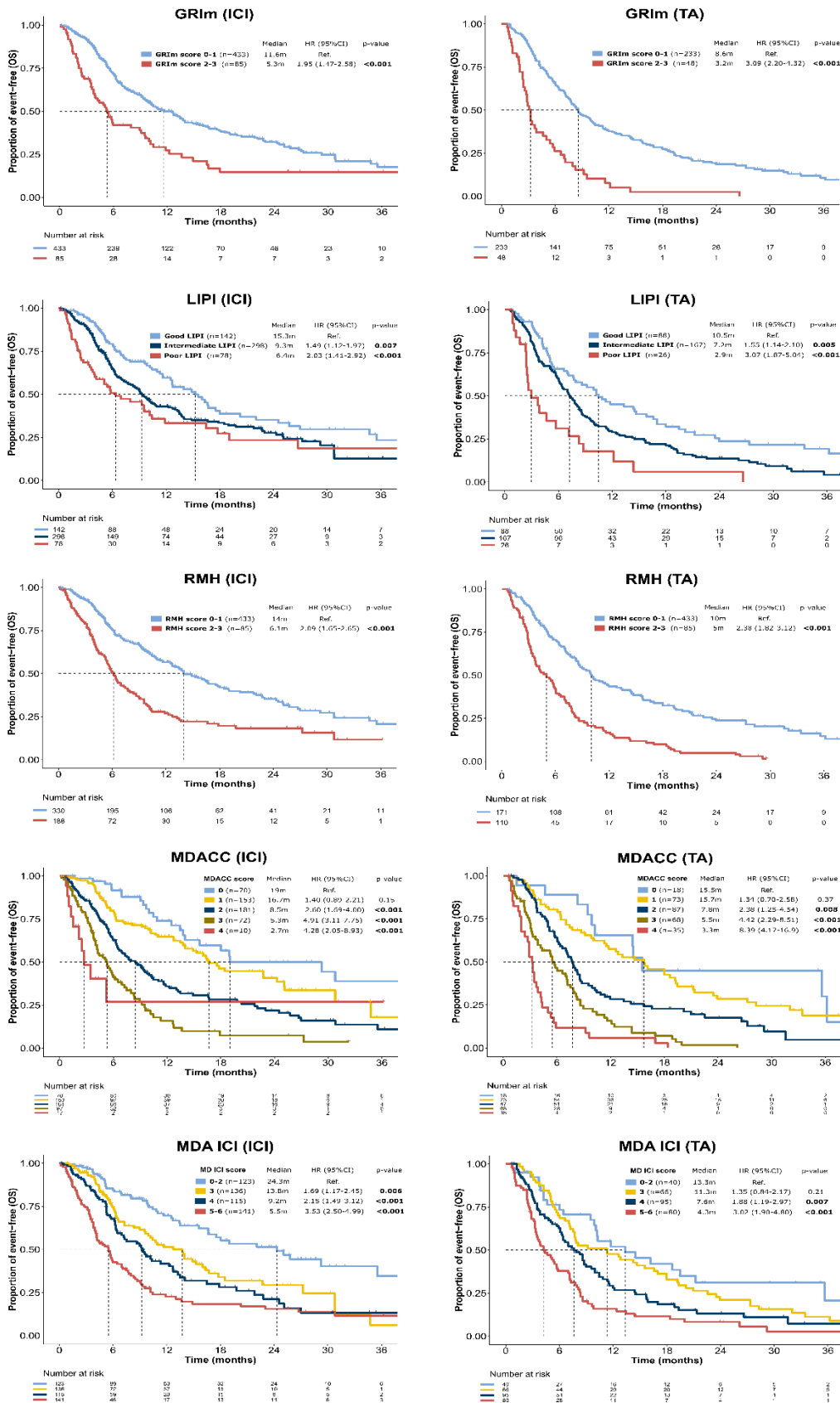
ECOG, performance status; LDH, lactate dehydrogenase; dNLR, derived neutrophils/(leukocytes minus neutrophils) ratio; HR, hazard ratio; CI, confidential interval.

Figure A3: Association between PIPO score (0-6) and overall survival



Overall survival (OS) in the training set (n=558, 426 events)				
PIPO score	N	median OS (95% CI)	HR (95% CI)	P value
Score 0	24	39.8 (18.0 - NA)	1 [Reference]	-
Score 1	89	21 (14.9 - 29.3)	2.16 (1.03 - 4.54)	0.04
Score 2	145	12.7 (10.3 - 18)	3.11 (1.51 - 6.40)	0.002
Score 3	154	7 (6.3 - 8.3)	5.09 (2.48 - 10.45)	<0.001
Score 4	86	5.7 (4.4 - 7.5)	6.52 (3.13 - 13.56)	<0.001
Score 5	44	3.5 (2.9 - 5.5)	10.27 (4.78 - 22.0)	<0.001
Score 6	16	2.2 (1.4 - 5.0)	25.31 (10.7 - 59.8)	<0.001

Figure A4: OS analysis using the different prognostic scores by treatment.



PIPO, phase I prognostic online; MDACC, MD Anderson Cancer Center; MDA ICI, MD Anderson Cancer Center immune checkpoint inhibitor, GRIm, Gustave Roussy immunescor; RMH, Royal Marsden Hospital, LIPI, lung immune prognostic index; ICI, immune checkpoint inhibitors; TA, target agents.

