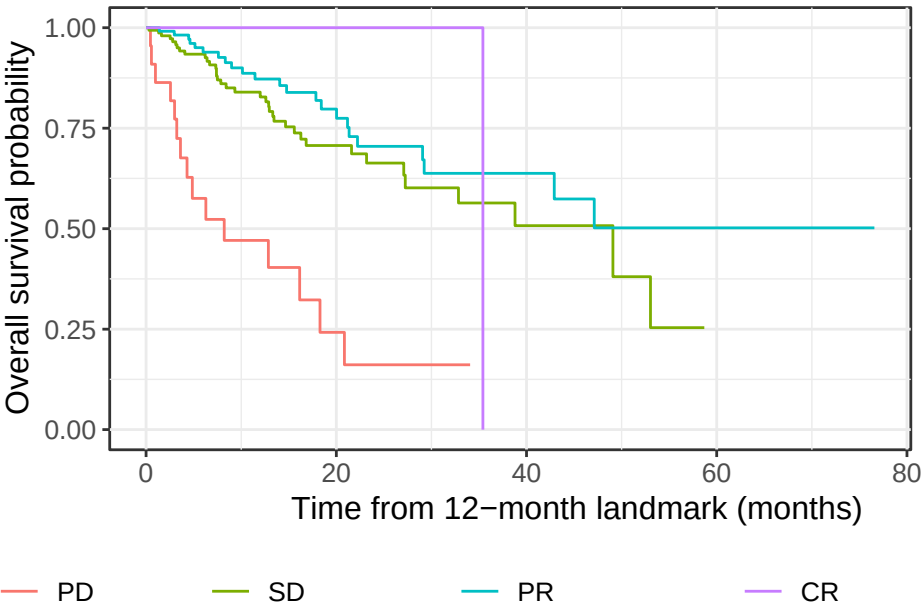


Annex Figure 1. Landmark analysis survival curves for overall survival from the 12 month-point



At Risk					
	0	10	20	30	40
PD	22	10	3	0	0
SD	158	115	37	7	0
PR	122	95	35	12	2
CR	3	1	2	0	0

Events					
	0	10	20	30	40
PD	0	14	15	15	15
SD	0	29	35	37	37
PR	0	15	21	23	23
CR	0	0	1	1	1

Concordance= 0.646 (standard error = 0.034). Abbreviations: PD= progressive disease, SD= stable disease, PR= partial response, CR= complete response.