

Table S1. Total dose and dose duration for LY3127804 and ramucirumab

Dose	Total Dose	Infusion Duration (mins), mean \pm SD
LY3127804 – 4, 8, and 12 mg/kg	≤ 1500 mg	60 ± 10
	$>1500 - 2250$ mg	90 ± 15
	>2250 mg	120 ± 20
LY3127804 – 16 and 20 mg/kg	≤ 2250 mg	90 ± 15
	>2250 mg	120 ± 20
Ramucirumab, 8 mg/kg or 12 mg/kg	-	60 ± 10

Table S2. Exposure to treatment drugs at each dose level

LY3127804 Exposure	Cohort					
Part A	A1 (n = 3) LY 4 mg/kg	A2 (n = 4) LY 8 mg/kg	A3 (n = 3) LY 12 mg/kg	A4 (n = 3) LY 16 mg/kg	A5 (n = 3) LY 20 mg/kg	A6 (n = 4) LY 27 mg/kg
No. of cycles/patient	4 (4-4)	3.5 (2-6)	2 (2-3)	2 (2-3)	1 (1-2)	2 (2-9)
Therapy duration (weeks)	16.1 (16-16)	14.4 (8-25)	8 (8-12)	8.3 (8-12)	4 (4-8)	8.5 (6-37)
Cumulative dose (mg)	2032 (1936-2824)	4112 (1528-9024)	4224 (2860-6120)	5120 (4736-8016)	2240 (1780-4776)	8370 (4779-32640)
Part B	-	B2 (n = 6) LY 8 mg/kg + RAM 8 mg/kg	B3 (n = 7) LY 12 mg/kg + RAM 8 mg/kg	B4 (n = 7) LY 16 mg/kg + RAM 8 mg/kg	B5 (n = 7) LY 20 mg/kg + RAM 8 mg/kg	B6 (n = 8) LY 27 mg/kg + RAM 8 mg/kg
No. of cycles/patient	-	4 (2-19)	2 (1-8)	4 (2-13)	3 (2-14)	2 (1-9)
Therapy duration (weeks)	-	16.5 (8-80)	8.4 (2-33)	16.3 (8-51)	10.1 (6-60)	8.1 (2-36)
Cumulative dose (mg)	-	5468 (2720-21600)	5184 (792-14544)	7641.6 (3728-34522)	5964 (4210-56836)	7706 (2009-31671)

Abbreviation: LY=LY3127804; RAM=ramucirumab.

All data are reported as median (range), unless specified.

Table S3. All cause TEAEs in ≥10% patients – Part A (total and by cohort)

TEAE	Total Part A (N = 20)		Cohort A1 LY 4 mg/kg (n = 3)		Cohort A2 LY 8 mg/kg (n = 4)		Cohort A3 LY 12 mg/kg (n = 3)		Cohort A4 LY 16 mg/kg (n = 3)		Cohort A5 LY 20 mg/kg (n = 3)		Cohort A6 LY 27mg/kg (n = 4)	
	All Grade	Grade ≥3	All Grade	Grade ≥3	All Grade	Grade ≥3	All Grade	Grade ≥3	All Grade	Grade ≥3	All Grade	Grade ≥3	All Grade	Grade ≥3
Constipation	4 (20.0)	0 (0)	0 (0)	0 (0)	1 (25.0)	0 (0)	2 (66.7)	0 (0)	0 (0)	0 (0)	1 (33.3)	0 (0)	0 (0)	0 (0)
Diarrhea	4 (20.0)	0 (0)	1 (33.3)	0 (0)	1 (25.0)	0 (0)	1 (33.3)	0 (0)	0 (0)	0 (0)	1 (33.3)	0 (0)	0 (0)	0 (0)
Fatigue	4 (20.0)	1 (5.0)	0 (0)	0 (0)	1 (25.0)	0 (0)	0 (0)	0 (0)	0 (0)	0 (0)	0 (0)	0 (0)	3 (75.0)	1 (25.0)
Peripheral edema	4 (20.0)	0 (0)	1 (33.3)	0 (0)	0 (0)	0 (0)	0 (0)	0 (0)	0 (0)	0 (0)	1 (33.3)	0 (0)	2 (50.0)	0 (0)
Abdominal pain	3 (15.0)	0 (0)	0 (0)	0 (0)	2 (50.0)	0 (0)	1 (33.3)	0 (0)	0 (0)	0 (0)	0 (0)	0 (0)	0 (0)	0 (0)
Headache	3 (15.0)	0 (0)	0 (0)	0 (0)	2 (50.0)	0 (0)	0 (0)	0 (0)	0 (0)	0 (0)	0 (0)	0 (0)	1 (25.0)	0 (0)
Arthralgia	2 (10.0)	0 (0)	0 (0)	0 (0)	0 (0)	0 (0)	1 (33.3)	0 (0)	1 (33.3)	0 (0)	0 (0)	0 (0)	0 (0)	0 (0)
Asthenia	2 (10.0)	1 (5.0)	0 (0)	0 (0)	0 (0)	0 (0)	0 (0)	0 (0)	0 (0)	0 (0)	1 (33.3)	0 (0)	1 (25.0)	1 (25.0)

Cough	2 (10.0)	0 (0)	0 (0)	0 (0)	0 (0)	0 (0)	1 (33.3)	0 (0)	0 (0)	0 (0)	0 (0)	0 (0)	1 (25.0)	0 (0)
Dizziness	2 (10.0)	0 (0)	0 (0)	0 (0)	1 (25.0)	0 (0)	0 (0)	0 (0)	0 (0)	0 (0)	0 (0)	0 (0)	1 (25.0)	0 (0)

Abbreviation: LY=LY3127804.

All data are reported as n (%), unless specified.

Table S4. All-cause TEAEs in ≥10% patients – Part B (LY3127804 + RAM 8 mg/kg)

TEAE	Total Part B (N = 35)		Cohort B2 LY 8 mg/kg (n = 6)		Cohort B3 LY 12 mg/kg (n = 7)		Cohort B4 LY 16 mg/kg (n = 7)		Cohort B5 LY 20 mg/kg (n = 7)		Cohort B6 LY 27 mg/kg (n = 8)	
	All Grade	Grade ≥3	All Grade	Grade ≥3	All Grade	Grade ≥3	All Grade	Grade ≥3	All Grade	Grade ≥3	All Grade	Grade ≥3
Hypertension	15 (42.9)	9 (25.7)	3 (50.0)	1 (16.7)	2 (28.6)	2 (28.6)	2 (28.6)	0 (0)	4 (57.1)	3 (42.9)	4 (50.0)	3 (37.5)
Peripheral edema	15 (42.9)	0 (0)	2 (33.3)	0 (0)	2 (28.6)	0 (0)	3 (42.9)	0 (0)	4 (57.1)	0 (0)	4 (50.0)	0 (0)
Fatigue	10 (28.6)	0 (0)	3 (50.0)	0 (0)	0 (0)	0 (0)	2 (28.6)	0 (0)	1 (14.3)	0 (0)	4 (50.0)	0 (0)
Headache	9 (25.7)	0 (0)	3 (50.0)	0 (0)	1 (14.3)	0 (0)	3 (42.9)	0 (0)	1 (14.3)	0 (0)	1 (12.5)	0 (0)
Vomiting	8 (22.9)	1 (2.9)	1 (16.7)	0 (0)	0 (0)	0 (0)	1 (14.3)	0 (0)	0 (0)	0 (0)	6 (75.0)	1 (12.5)
Abdominal pain	6 (17.1)	0 (0)	1 (16.7)	0 (0)	1 (14.3)	0 (0)	1 (14.3)	0 (0)	1 (14.3)	0 (0)	2 (25.0)	0 (0)
Constipation	6 (17.1)	0 (0)	1 (16.7)	0 (0)	1 (14.3)	0 (0)	1 (14.3)	0 (0)	2 (28.6)	0 (0)	1 (12.5)	0 (0)
Decreased appetite	6 (17.1)	0 (0)	1 (16.7)	0 (0)	0 (0)	0 (0)	2 (28.6)	0 (0)	2 (28.6)	0 (0)	1 (12.5)	0 (0)
Dyspnea	6 (17.1)	1 (2.9)	0 (0)	0 (0)	2 (28.6)	1 (14.3)	2 (28.6)	0 (0)	1 (14.3)	0 (0)	1 (12.5)	0 (0)
Ascites	5 (14.3)	1 (2.9)	1 (16.7)	0 (0)	0 (0)	0 (0)	0 (0)	0 (0)	1 (14.3)	0 (0)	3 (37.5)	1 (12.5)
Diarrhea	5 (14.3)	0 (0)	1 (16.7)	0 (0)	1 (14.3)	0 (0)	1 (14.3)	0 (0)	1 (14.3)	0 (0)	1 (12.5)	0 (0)

Abdominal distension	4 (11.4)	0 (0)	0 (0)	0 (0)	0 (0)	0 (0)	1 (14.3)	0 (0)	0 (0)	0 (0)	3 (37.5)	0 (0)
Arthralgia	4 (11.4)	0 (0)	0 (0)	0 (0)	1 (14.3)	0 (0)	2 (28.6)	0 (0)	0 (0)	0 (0)	1 (12.5)	0 (0)
Asthenia	4 (11.4)	0 (0)	1 (16.7)	0 (0)	0 (0)	0 (0)	2 (28.6)	0 (0)	0 (0)	0 (0)	1 (12.5)	0 (0)
Cough	4 (11.4)	0 (0)	0 (0)	0 (0)	1 (14.3)	0 (0)	2 (28.6)	0 (0)	1 (14.3)	0 (0)	0 (0)	0 (0)
Infusion-related reaction	4 (11.4)	1 (2.9)	0 (0)	0 (0)	1 (14.3)	1 (14.3)	1 (14.3)	0 (0)	0 (0)	0 (0)	2 (25.0)	0 (0)
Proteinuria	4 (11.4)	0 (0)	0 (0)	0 (0)	1 (14.3)	0 (0)	1 (14.3)	0 (0)	1 (14.3)	0 (0)	1 (12.5)	0 (0)

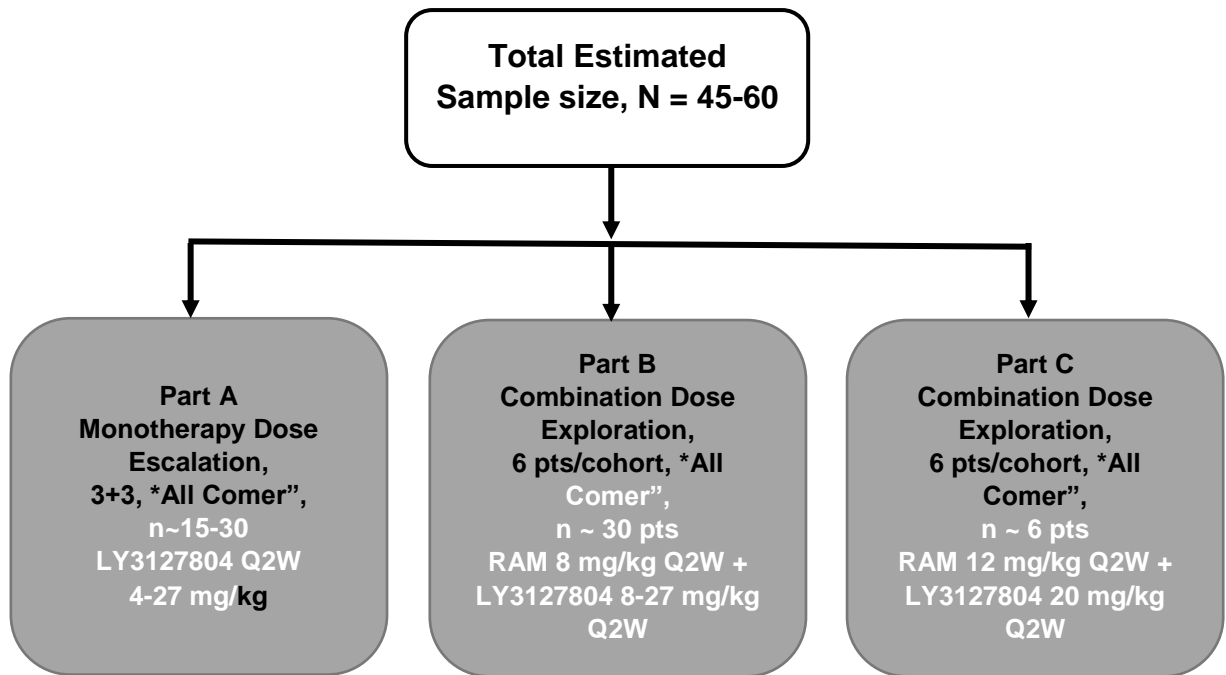
Abbreviation: LY=LY3127804; RAM=ramucirumab.

All data are reported as n (%), unless specified.

Table S5. Institutional review boards

Site Loc Address Type	Site Loc Center Name	Country Code	Site Ref Number	Primary Investigator
ERB - Ethics Committee Jules Bordet	Institut Jules Bordet, Brussels, Belgium	BE	301	Ahmad Awada
ERB	Hospital Universitari Vall d'Hebron, Barcelona, Spain	ES	501	Juan J. Martin Liberal
ERB - CPP "Ile-de-France V"	Gustave Roussy, Paris, France	FR	401	Antoine Hollebecque
ERB - IntegReview Ethical Review Board	Sarah Cannon Research Institute, Nashville, Tennessee, USA	US	101	Johanna Bendell

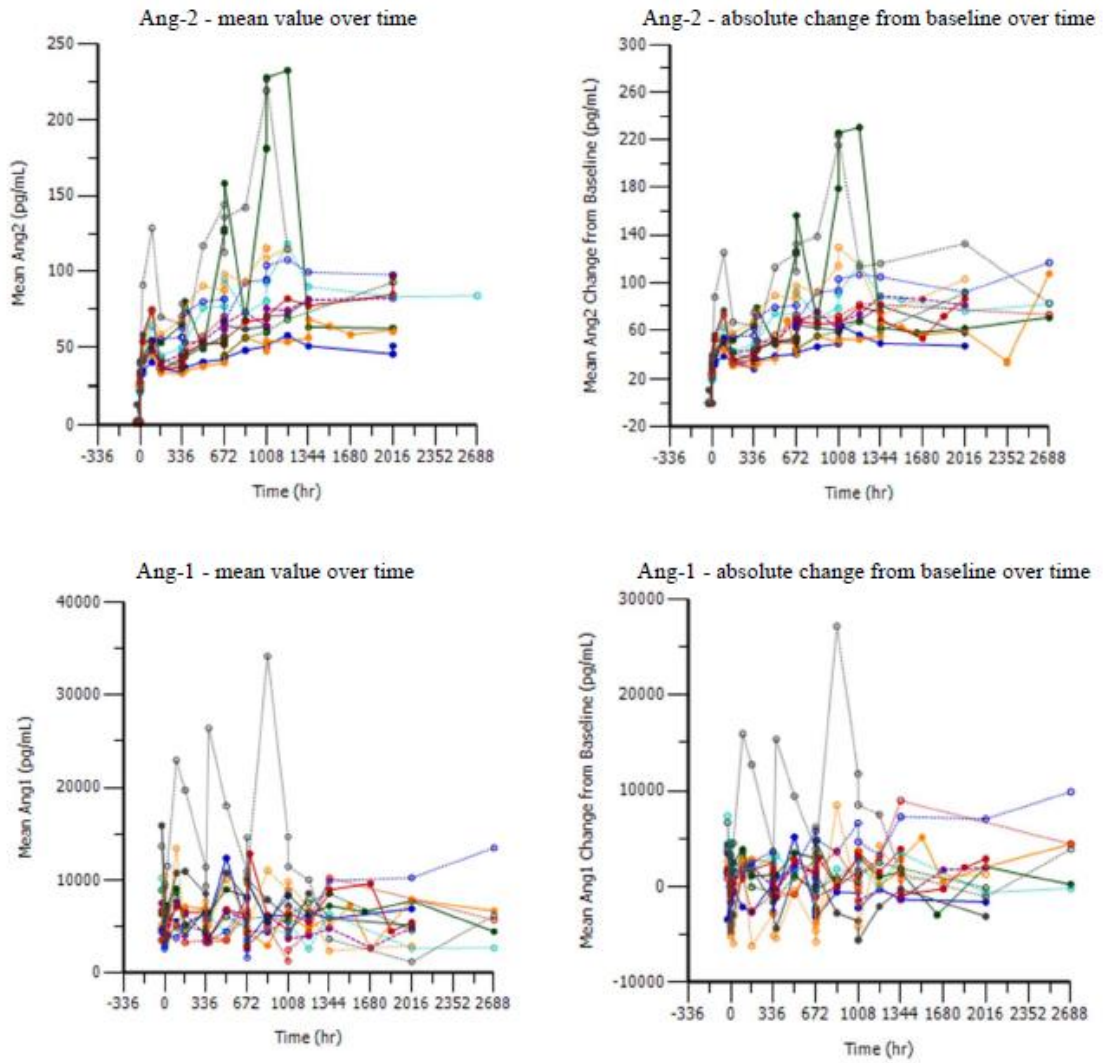
Figure S1. Study design and patient disposition



All comers are patients with any type of solid tumor.

Abbreviations: Q2W=once every 2 weeks; RAM=ramucirumab.

Figure S2. Change in Ang-1 and Ang-2 concentrations over time.



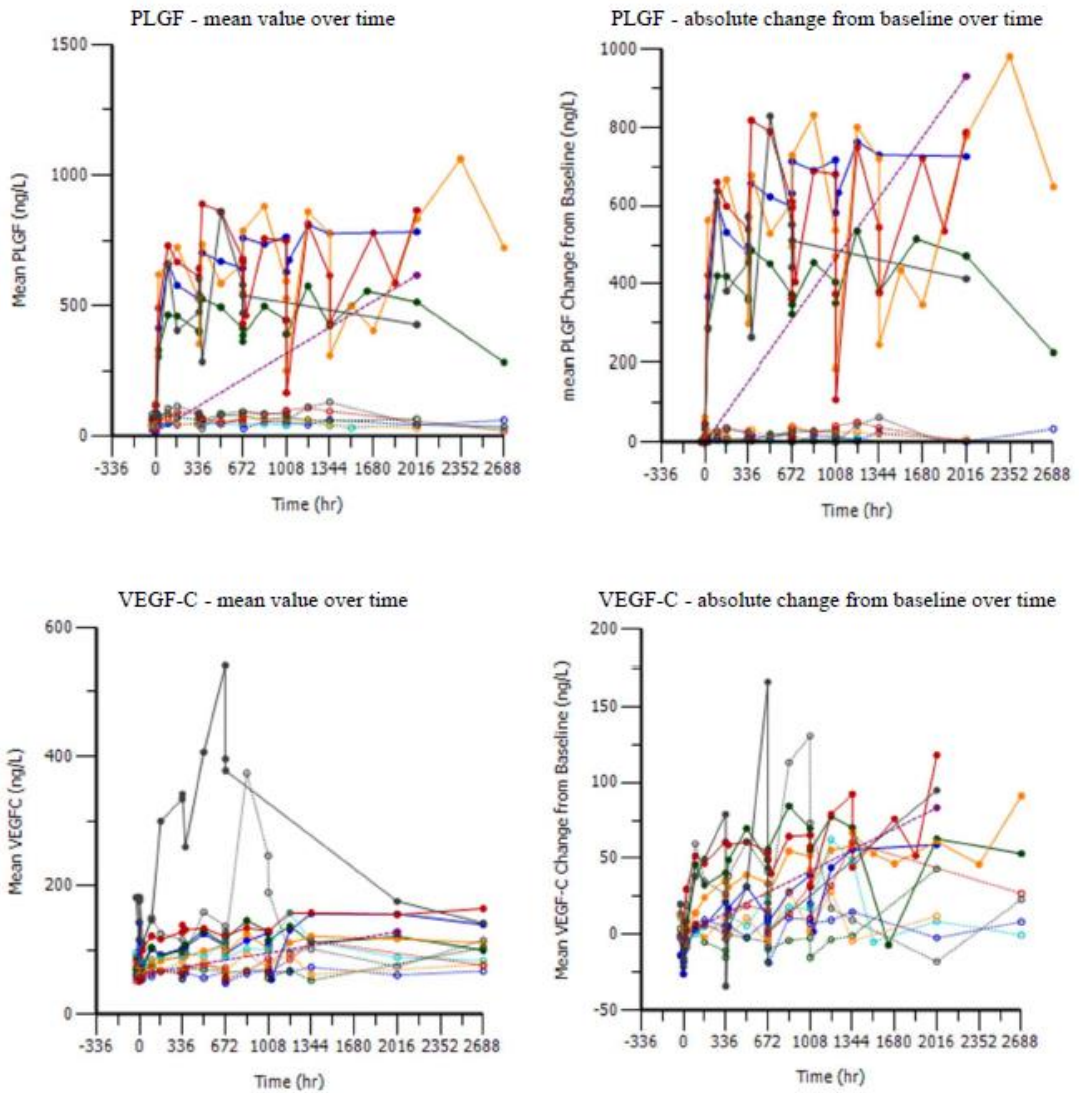
LY3127804 monotherapy

- LY3127804 4 mg/kg
- LY3127804 8 mg/kg
- LY3127804 12 mg/kg
- LY3127804 16 mg/kg
- LY3127804 20 mg/kg
- LY3127804 27 mg/kg

LY3127804 and ramucirumab combination

- B_LY8_RAM8
- B_LY12_RAM8
- B_LY16_RAM8
- B_LY20_RAM8
- B_LY27_RAM8
- C_LY20_RAM12

Figure S3. Change in PLGF and VEGFC concentrations over time



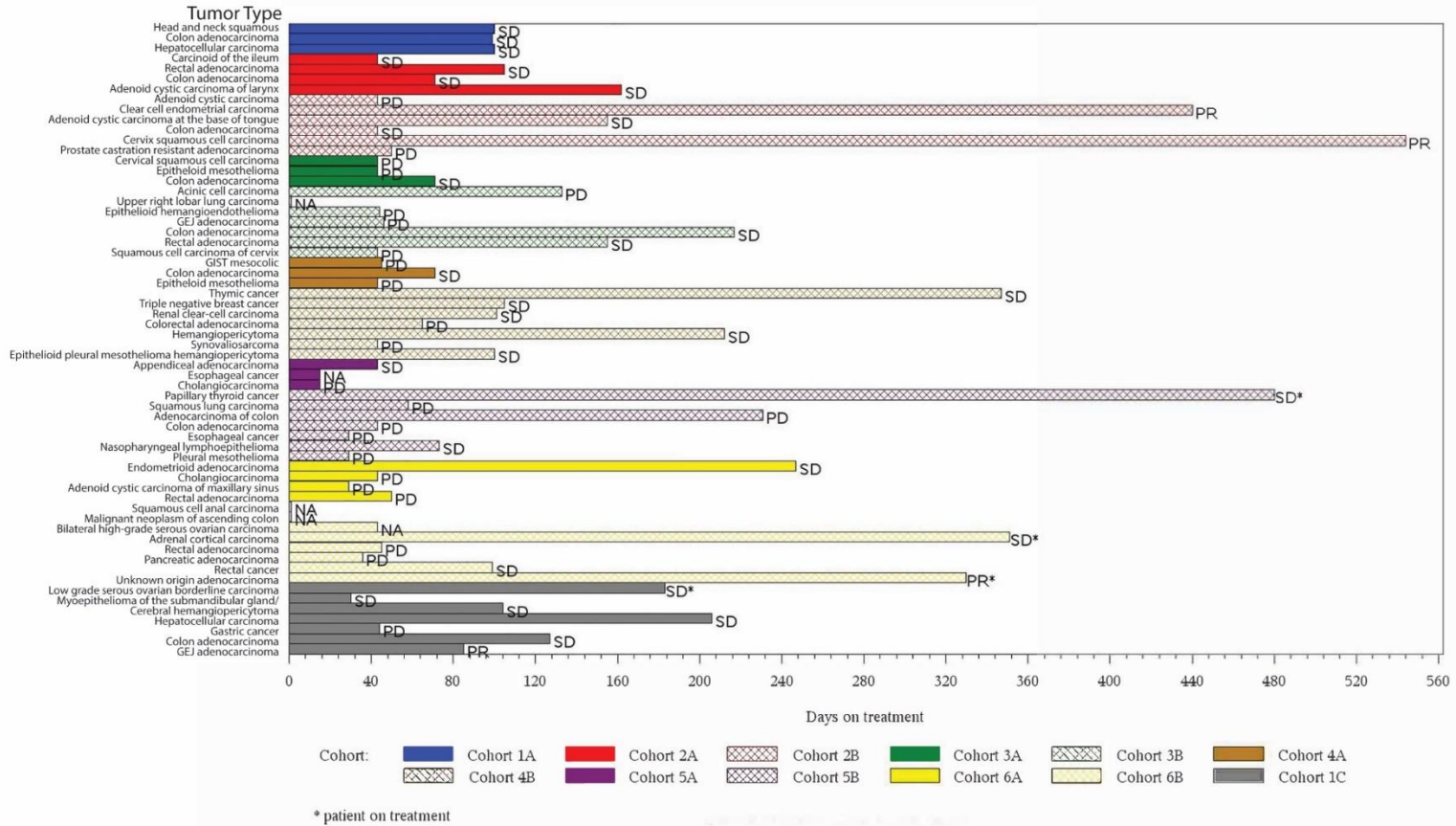
LY3127804 monotherapy

- LY3127804 4 mg/kg
- LY3127804 8 mg/kg
- LY3127804 12 mg/kg
- LY3127804 16 mg/kg
- LY3127804 20 mg/kg
- LY3127804 27 mg/kg

LY3127804 and ramucirumab combination

- B_LY8_RAM8
- B_LY12_RAM8
- B_LY16_RAM8
- B_LY20_RAM8
- B_LY27_RAM8
- C_LY20_RAM12

Figure S4. Duration of treatment by tumor type in patients with PR, SD, and PD



Abbreviations: GEJ = gastroesophageal junction adenocarcinoma; GIST = gastrointestinal stromal tumor; NA = not assessed.