

Supplementary Materials

Table S1. Comparison of psychopathology state between the groups, according to the SCL-90R scales between the groups: ANCOVA adjusted by sex, age, education and BMI.

	AN-R N=107		OB-T2D N=115		HC N=171		OB+T2D N=67		GD N=121		Polynomial contrasts Trends (<i>p</i> -value)			
	<i>Mean</i>	<i>SD</i>	<i>Mean</i>	<i>SD</i>	<i>Mean</i>	<i>SD</i>	<i>Mean</i>	<i>SD</i>	<i>Mean</i>	<i>SD</i>	O1	O2	O3	O4
Somatic	1.28	0.91	1.33	0.82	0.64	0.47	0.99	0.80	1.36	0.81	.567	.001*	.004*	.018*
Obsessive-compulsive	1.24	0.91	1.26	0.73	0.70	0.56	1.04	0.67	1.45	0.87	.505	.001*	.016*	.055
Interpersonal sensitivity	1.43	0.97	1.20	0.83	0.57	0.56	0.74	0.60	1.35	0.87	.049*	.001*	.002*	.197
Depressive	1.78	1.00	1.31	0.77	0.57	0.51	0.98	0.76	1.90	0.97	.781	.001*	.006*	.107
Anxiety	1.08	0.87	1.04	0.72	0.43	0.40	0.67	0.60	1.35	0.85	.564	.001*	.001*	.086
Hostility	0.87	0.84	0.73	0.62	0.38	0.50	0.51	0.46	1.19	0.91	.123	.001*	.002*	.604
Phobic anxiety	0.56	0.66	0.45	0.59	0.16	0.26	0.25	0.60	0.58	0.62	.434	.001*	.026*	.391
Paranoia	1.09	0.84	0.99	0.69	0.50	0.55	0.72	0.63	1.21	0.82	.921	.001*	.008*	.171
Psychotic	1.01	0.72	0.63	0.54	0.28	0.30	0.50	0.85	1.13	0.76	.679	.001*	.101	.507
GSI	1.24	0.75	1.08	0.63	0.51	0.40	0.77	0.53	1.38	0.73	.917	.001*	.001*	.077
PST	49.07	19.77	52.37	19.44	29.23	17.67	42.78	18.45	55.65	20.78	.644	.001*	.001*	.001*
PSDI	2.11	0.61	1.71	0.48	1.46	0.33	1.58	0.52	2.10	0.62	.474	.001*	.169	.813
Pairwise comparisons	AN-R/ OB-T2D	AN-R/ HC	AN-R/ OB+T2D	AN-R/ GD	OB-T2D/ HC	OB-T2D/ OB+T2D	OB-T2D/ GD	HC/ OB+T2D	HC/ GD	OB+T2D/ GD				η^2
Somatic	.798	<.001*	.139	.524	<.001*	.004*	.817	.038*	<.001*	.016*				.134[†]
Obsessive-compulsive	.937	<.001*	.314	.119	.001*	.073	.218	.046*	<.001*	.010*				.109[†]
Interpersonal sensitivity	.254	<.001*	.001*	.579	<.001*	<.001*	.356	.324	<.001*	<.001*				.176[†]
Depressive	.021*	<.001*	<.001*	.400	<.001*	.010*	<.001*	.024*	<.001*	<.001*				.289[†]
Anxiety	.819	<.001*	.027*	.033*	<.001*	.001*	.036*	.111	<.001*	<.001*				.185[†]
Hostility	.432	<.001*	.054	.009*	.021*	.054	.001*	.430	<.001*	<.001*				.127[†]
Phobic anxiety	.427	<.001*	.029*	.857	.009*	.019*	.261	.443	<.001*	.004*				.101[†]
Paranoia	.602	<.001*	.051	.334	.001*	.017*	.144	.174	<.001*	.001*				.124[†]
Psychotic	.016*	<.001*	.002*	.304	.010*	.213	<.001*	.127	<.001*	<.001*				.196[†]
GSI	.294	<.001*	.004*	.198	<.001*	.002*	.017*	.058	<.001*	<.001*				.225[†]
PST	.501	<.001*	.218	.055	<.001*	.002*	.414	.002*	<.001*	.002*				.203[†]
PSDI	.002*	<.001*	<.001*	.922	.021*	.115	<.001*	.298	<.001*	<.001*				.202[†]

Note. AN: anorexia nervosa-restrictive. OB-T2D: obese without diabetes. HC: healthy control. OB+T2D: obese with diabetes. GD: gambling disorder. GSI: global severity index. PST: Positive Symptom Total. PSDI: Positive Symptom Distress Index. SD: standard deviation. O1: Order 1, linear. O2: order 2, quadratic. O3: order 3, cubic. O4: order 4, quartic. η^2 : Partial eta-squared. *Bold: significant parameter. [†]Bold: effect size within the ranges moderate-medium to large-high.

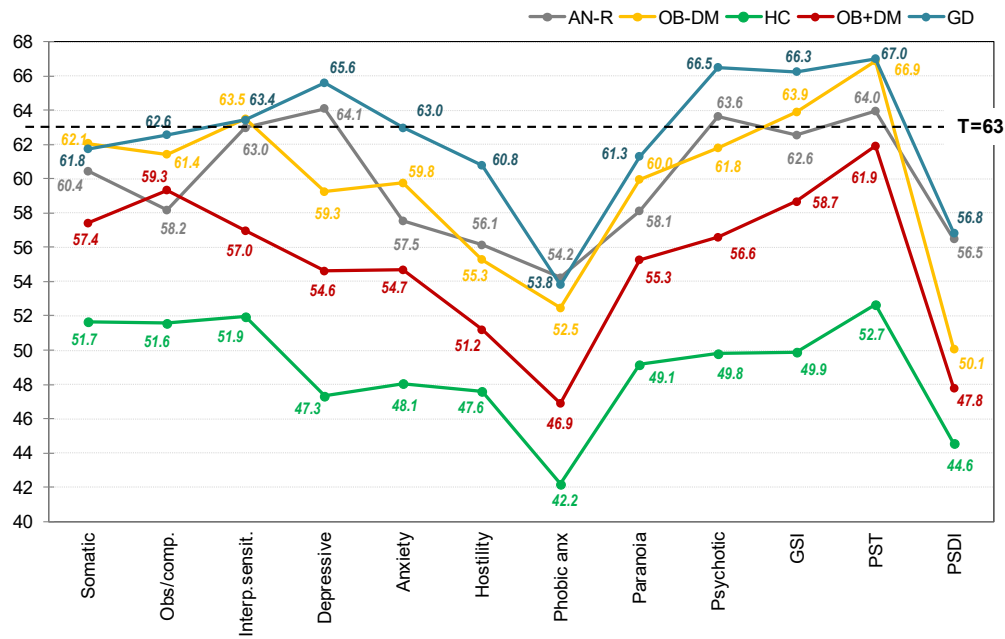


Figure S1. Line-charts with the SCL-90R profile in the study (mean T-scores). Note. AN-R: anorexia nervosa restrictive. OB-T2D: obese without diabetes. HC: healthy control. OB+T2D: obese with diabetes. GD: gambling disorder. GSI: global severity index. PST: Positive Symptom Total. PSDI: Positive Symptom Distress Index. Y-axis represents the mean for the T-scores (adjusted by sex, age, education, and BMI).