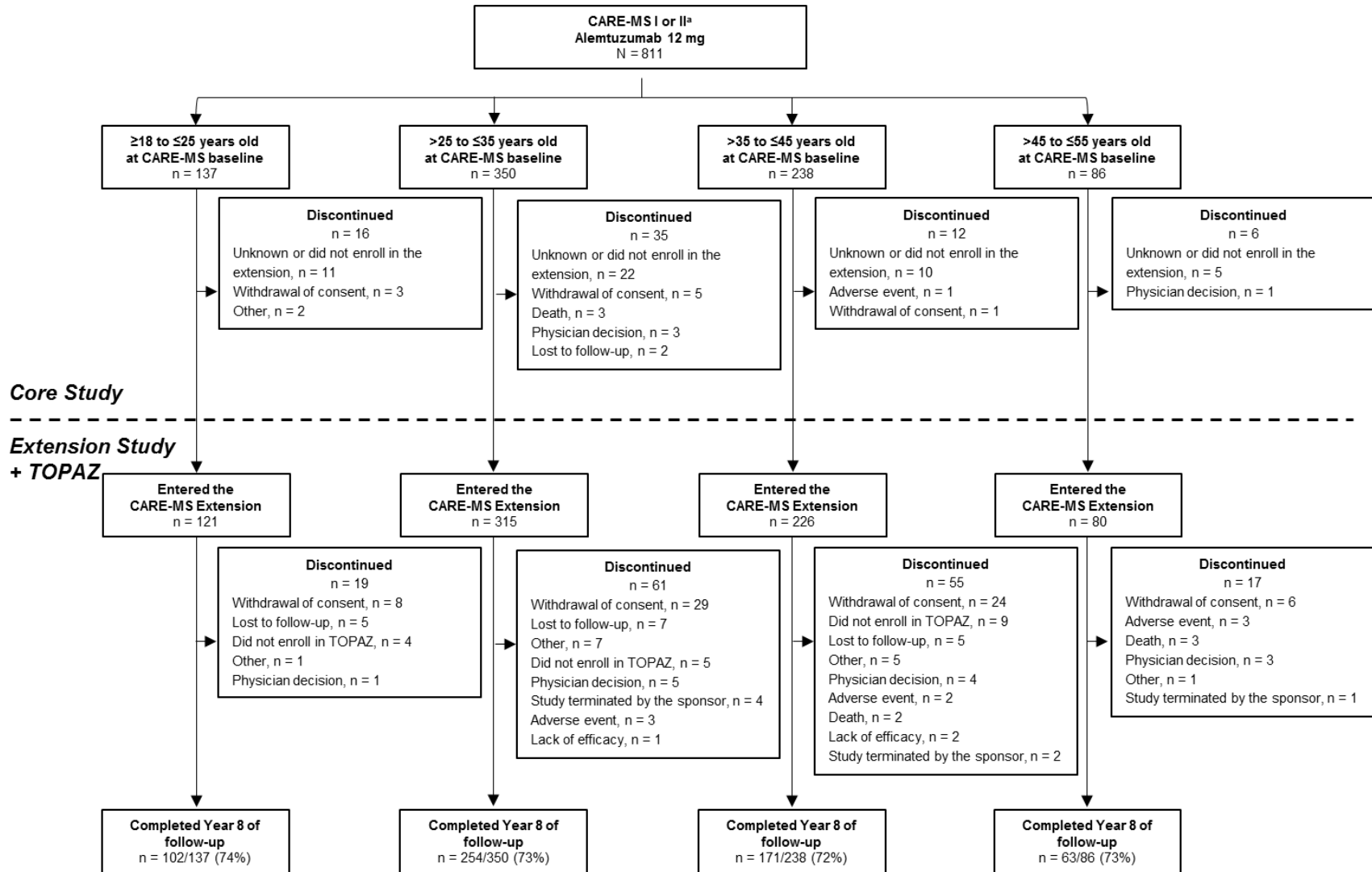


**Supplementary Figure 1: Disposition by age cohort**



**Disposition by age cohort.** Schematic of patient participation from each age group starting from CARE-MS I and II core study baselines through Year 8. <sup>a</sup>As-treated CARE-MS population, which includes 9 CARE-MS II patients who received alemtuzumab 12 mg despite randomization to the alemtuzumab 24 mg study arm. CARE-MS, Comparison of Alemtuzumab and Rebif<sup>®</sup> Efficacy in Multiple Sclerosis; TOPAZ, a long-Term follow-up study for multiple sclerOsis PAtients who have completed the AlemtuZumab extension study.