

# A phase 1/2, open-label, multicenter study of isatuximab in combination with cemiplimab in patients with lymphoma

Carmelo Carlo-Stella<sup>1</sup> | Pier Luigi Zinzani<sup>2</sup>  | Anna Sureda<sup>3</sup> | Luis Araújo<sup>4</sup> | Olivier Casasnovas<sup>5</sup> | Cecilia Carpio<sup>6</sup> | Su-Peng Yeh<sup>7</sup> | Krimo Bouabdallah<sup>8</sup> | Guillaume Cartron<sup>9</sup> | Won Seog Kim<sup>10</sup> | Raul Cordoba<sup>11</sup> | Youngil Koh<sup>12</sup> | Alessandro Re<sup>13</sup> | Daniela Alves<sup>14</sup> | Martine Chamuleau<sup>15</sup> | Steven Le Guill<sup>16</sup> | Armando López-Guillermo<sup>17</sup> | Ilídia Moreira<sup>18</sup> | Marjolein W. M. van der Poel<sup>19</sup> | Giovanni Abbadessa<sup>20</sup> | Robin Meng<sup>20</sup> | Ran Ji<sup>20</sup> | Lucie Lépine<sup>21</sup> | Rao Saleem<sup>20</sup> | Vincent Ribrag<sup>22</sup>

<sup>1</sup>Department of Biomedical Sciences, Humanitas University and Department of Oncology and Hematology, IRCCS Humanitas Research Hospital, Milano, Italy

<sup>2</sup>IRCCS Azienda Ospedaliero-Universitaria di Bologna Istituto di Ematologia "Seragnoli" and Dipartimento di Medicina Specialistica, Diagnostica e Sperimentale Università di Bologna, Bologna, Italy

<sup>3</sup>Institut Català D'Oncologia - Hospital Duran i Reynals, IDIBELL, Universitat de Barcelona, Barcelona, Spain

<sup>4</sup>Universitário de Coimbra, Coimbra, Portugal

<sup>5</sup>Hématologie Clinique, CHU Dijon Bourgogne, Dijon, France

<sup>6</sup>Department of Hematology, Vall d'Hebron Institute of Oncology (VHIO), Hospital Universitari Vall d'Hebron, Vall d'Hebron Barcelona Hospital Campus, Universitat Autònoma de Barcelona, Barcelona, Spain

<sup>7</sup>China Medical University Hospital, Taichung, Taiwan

<sup>8</sup>Hematology and Cellular Therapy Department, University Hospital of Bordeaux, Bordeaux, France

<sup>9</sup>Department of Hematology, Centre Hospitalier Universitaire Montpellier, Montpellier, France

<sup>10</sup>Sungkyunkwan University School of Medicine, Samsung Medical Center, Seoul, Korea

<sup>11</sup>Fundación Jiménez Díaz University Hospital, Madrid, Spain

<sup>12</sup>Department of Internal Medicine, Seoul National University Hospital, Seoul, Korea

<sup>13</sup>Hematology Division, ASST Spedali Civili Brescia, Brescia, Italy

<sup>14</sup>Hematology and Bone Marrow Transplant Department, Hospital de Santa Maria, Centro Hospitalar Universitário Lisboa Norte (CHULN), Lisbon, Portugal

<sup>15</sup>Department of Hematology, Cancer Center Amsterdam, on behalf of the LLPC (Lunenburger Lymphoma Phase I/II Consortium), Amsterdam University Medical Center, VU University Amsterdam, Amsterdam, The Netherlands

<sup>16</sup>Department of Hematology, Institut Curie, Paris, France

<sup>17</sup>Department of Hematology, Hospital Clínic de Barcelona, Barcelona, Spain

<sup>18</sup>Department of Onco-Hematology, Portuguese Institute of Oncology of Porto, Porto, Portugal

<sup>19</sup>Department of Internal Medicine, Division of Hematology, GROW School for Oncology and Developmental Biology, on behalf of the LLPC (Lunenburger Lymphoma Phase I/II Consortium), Maastricht University Medical Center, Maastricht, the Netherlands

<sup>20</sup>Sanofi, Cambridge, Massachusetts, USA

<sup>21</sup>Sanofi, Chilly-Mazarin, France

<sup>22</sup>Département d'Hématologie et Département des Essais Précoces (DITEP), Institut Gustave Roussy, Villejuif, France

-----  
This is an open access article under the terms of the Creative Commons Attribution License, which permits use, distribution and reproduction in any medium, provided the original work is properly cited.

© 2022 The Authors. Hematological Oncology published by John Wiley & Sons Ltd.

**Correspondence**

Carmelo Carlo-Stella, Humanitas Research Hospital, via Manzoni 56, 20089, Milano, Italy.  
Email: [carmelo.carlostella@hunimed.eu](mailto:carmelo.carlostella@hunimed.eu)

**Funding information**

Sanofi

**Abstract**

Patients with relapsed or refractory lymphoma have limited treatment options, requiring newer regimens. In this Phase 1/2 study (NCT03769181), we assessed the safety, efficacy, and pharmacokinetics of isatuximab (Isa, anti-CD38 antibody) in combination with cemiplimab (Cemi, anti-programmed death-1 [PD-1] receptor antibody; Isa + Cemi) in patients with classic Hodgkin lymphoma (cHL), diffuse large B-cell lymphoma (DLBCL), and peripheral T-cell lymphoma (PTCL). In Phase 1, we characterized the safety and tolerability of Isa + Cemi with planned dose de-escalation to determine the recommended Phase 2 dose (RP2D). Six patients in each cohort were treated with a starting dose of Isa + Cemi to determine the RP2D. In Phase 2, the primary endpoints were complete response in Cohort A1 (cHL anti-PD-1/programmed death-ligand 1 [PD-L1] naïve), and objective response rate in Cohorts A2 (cHL anti-PD-1/PD-L1 progressors), B (DLBCL), and C (PTCL). An interim analysis was performed when the first 18 (Cohort A1), 12 (Cohort A2), 17 (Cohort B), and 11 (Cohort C) patients in Phase 2 had been treated and followed up for 24 weeks. Isa + Cemi demonstrated a manageable safety profile with no new safety signals. No dose-limiting toxicities were observed at the starting dose; thus, the starting dose of each drug was confirmed as the RP2D. Based on the Lugano 2014 criteria, 55.6% (Cohort A1), 33.3% (Cohort A2), 5.9% (Cohort B), and 9.1% (Cohort C) of patients achieved a complete or partial response. Pharmacokinetic analyses suggested no effect of Cemi on Isa exposure. Modest clinical efficacy was observed in patients with cHL regardless of prior anti-PD-1/PD-L1 exposure. In DLBCL or PTCL cohorts, interim efficacy analysis results did not meet prespecified criteria to continue enrollment in Phase 2 Stage 2. Isa + Cemi did not have a synergistic effect in these patient populations.

**KEYWORDS**

cemiplimab, diffuse large B-cell lymphoma, isatuximab, non-Hodgkin lymphoma, peripheral T-cell lymphoma

**1 | INTRODUCTION**

Immune checkpoint blockade has contributed to the efficacy of targeted anti-programmed death 1 (PD-1)/anti-programmed death-ligand 1 (PD-L1) agents in many tumor types, with clinical responses observed in a small proportion of patients with Hodgkin lymphoma (HL) and rare non-HL (NHL) subtypes.<sup>1,2</sup> PD-1 inhibitors, nivolumab and pembrolizumab, received US Food and Drug Administration approval for relapsed/refractory classic Hodgkin lymphoma (cHL); however, only a small fraction of patients achieved complete response (CR) in Phase 2 trials of these agents.<sup>3,4</sup> Early-phase studies with single-agent anti-PD-1 antibodies produced low or modest clinical activity in patients with diffuse large B-cell lymphoma (DLBCL) and peripheral T-cell lymphoma (PTCL).<sup>5–8</sup> New therapies that employ anti-PD-1/PD-L1 antibodies in combination with other therapies are being evaluated in patients with lymphoma.

The expression of the transmembrane glycoprotein CD38 is well documented in hematological cancers, including multiple myeloma

(MM), certain types of lymphoma, and leukemia; the prevalence and expression level of CD38 is lower and more variable in non-MM cancers.<sup>2,9–14</sup> Monoclonal antibodies targeting CD38 have demonstrated deep clinical outcomes in patients with MM, but data supporting their clinical utility in lymphoid malignancies are limited.<sup>15</sup> Preclinical studies demonstrated cytotoxic activity of anti-CD38 antibodies against CD38+ malignancies.<sup>9,16,17</sup> Furthermore, in murine models of lung cancer and melanoma, acquired resistance to anti-PD-1/PD-L1 agents is associated with CD38 upregulation on tumor cells, thereby leading to CD38-mediated CD8+ T-cell suppression via adenosine receptor signaling.<sup>18</sup> Co-inhibition of PD-L1 and CD38 contributed to a stronger anti-tumor immune response compared with anti-PD-L1 monotherapy in a mouse lung cancer model.<sup>18</sup> Thus, the opportunity remains to develop regimens that incorporate an anti-CD38 monoclonal antibody as a partner for patients with lymphoma. Cemiplimab (Cemi) is a recombinant human IgG4 monoclonal antibody that binds to PD-1 and blocks its interaction with PD-L1 and PD-L2.<sup>19</sup> Cemi is approved for treating

patients with metastatic or locally advanced cutaneous squamous cell carcinoma, basal cell carcinoma, and non-small cell lung cancer with high PD-L1 expression.<sup>19</sup> Preliminary studies showed that Cemi monotherapy is well tolerated and has minimal clinical activity in patients with HL and B-cell NHL.<sup>8</sup>

Isatuximab (Isa) is an IgG1 monoclonal antibody that targets a specific epitope on CD38 and kills CD38+ cells from hematological malignancies via multiple mechanisms.<sup>17,20</sup> Notably, Isa demonstrated potent antitumor activity against diverse CD38+ B-cell lymphoma, DLBCL, MM, and leukemia cell lines as well as xenograft models derived from these cell lines.<sup>17</sup> Based on the Phase 3 ICARIA-MM and IKEMA studies (NCT02990338; NCT03275285),<sup>21,22</sup> Isa has been approved in combination with pomalidomide and dexamethasone or carfilzomib and dexamethasone, respectively, in MM.

In view of preclinical evidence for the activity of Isa in lymphoma, coupled with early studies showing suboptimal clinical activity of single-agent anti-PD-1 antibodies in HL, DLBCL, and PTCL, we hypothesize that Isa plus Cemi (Isa + Cemi) will have a synergistic effect in patients with lymphoma. Currently, data on Isa activity in PTCL are lacking; however, we included patients with PTCL because CD38, PD-1, and PD-L1 are expressed in certain types of PTCL.<sup>2</sup> In this Phase 1/2 study (NCT03769181), we evaluated the safety, efficacy, and pharmacokinetics of Isa + Cemi in patients with relapsed and refractory cHL, DLBCL, and PTCL. Phase 1 primary objectives were to characterize the safety and tolerability of Isa + Cemi and to confirm the recommended Phase 2 dose (RP2D). In Phase 2, we assessed the CR rate of Isa + Cemi in anti-PD-1/PD-L1 naïve patients with cHL (Cohort A1) and objective response rate (ORR) in anti-PD-1/PD-L1 progressors with cHL (Cohort A2), anti-PD-1/PD-L1 naïve patients with DLBCL (Cohort B), and anti-PD-1/PD-L1 naïve patients with PTCL (Cohort C).

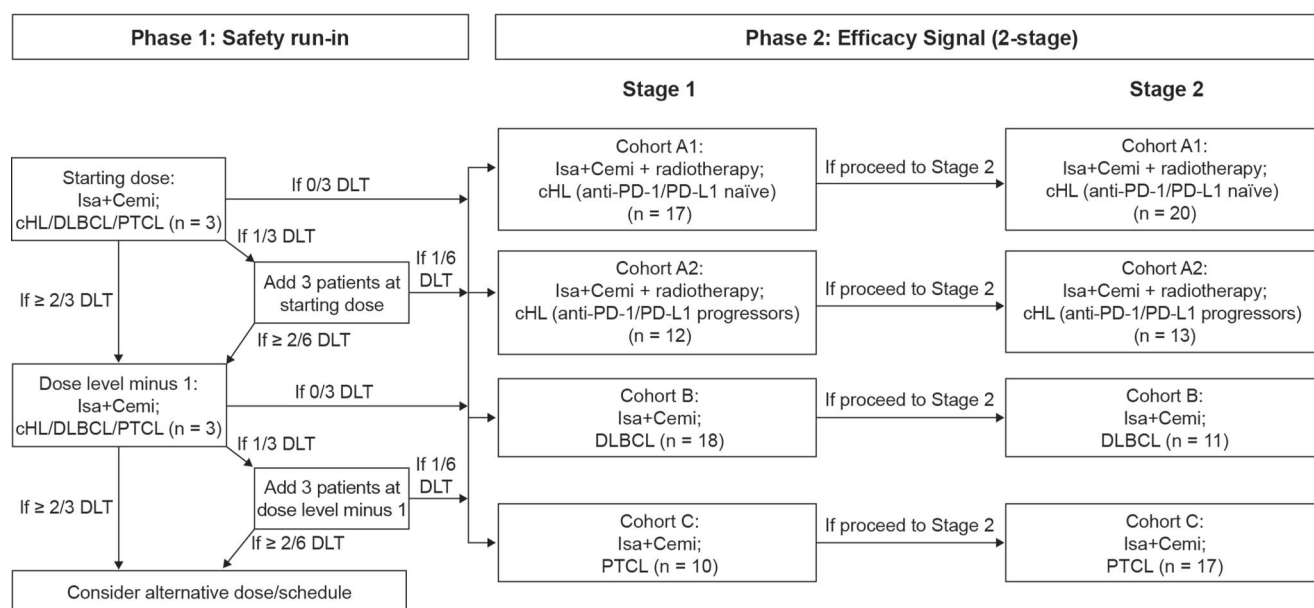
## 2 | PATIENTS AND METHODS

### 2.1 | Study design and participants

This was a Phase 1/2 multicenter, non-comparative, open-label study. Patients were enrolled at 23 study sites in seven countries (France, Italy, Republic of Korea, Netherlands, Portugal, Spain, and Taiwan).

Eligible patients were  $\geq 12$  years old and had disease location amenable to tumor biopsy at baseline, measurable disease, and histologically confirmed advanced cHL, DLBCL, or PTCL that had relapsed or progressed after previous therapy. The number of previous therapies required for inclusion differed by cohort:  $\geq 3$  (cHL anti-PD-1/PD-L1 naïve), 1 anti-PD-1/PD-L1-containing regimen (cHL anti-PD-1/PD-L1 progressors), 2 (DLBCL), and 1 (PTCL). Key exclusion criteria were prior exposure to anti-CD38, anti-PD-1/PD-L1 (except for cHL anti-PD-1/PD-L1 progressors), anti-PD-L2, anti-CD137, anti-CTLA4, or anti-LAG3 agents, evidence of other immune-related disease/conditions, Eastern Cooperative Oncology Group (ECOG) performance status  $\geq 2$ , poor bone marrow reserve, and poor organ function. Among cHL anti-PD-1/PD-L1 progressors, 3 patients were refractory to a prior anti-PD-1 agent. One patient who had a partial response (PR) with prior pembrolizumab developed progressive disease upon rechallenge.

The study was in two parts (study design in Figure 1). Eligible patients with cHL, DLBCL, or PTCL were enrolled in Phase 1 and RP2D was determined according to the dose-limiting toxicities (DLTs) in Cycle 1. Patients were treated with Isa + Cemi at the starting dose; dose de-escalation to a dose level minus one or an alternative dose/schedule was planned if DLTs occurred in  $\geq 2/3$  patients in Cycle 1 (see Procedures for drug doses). Patients were



**FIGURE 1** Study design. Cemi, cemiplimab; cHL, classic Hodgkin lymphoma (HL); DLBCL, diffuse large B-cell lymphoma; DLT, dose-limiting toxicity; Isa, isatuximab; PD-1, programmed death-1; PD-L1, programmed death ligand-1; PTCL, peripheral T-cell lymphoma

treated in Stage 1 of Phase 2 at the RP2D until disease progression or unacceptable toxicity. Phase 2 included four cohorts: A1, A2, B, and C. Patients treated at the RP2D of Isa + Cemi during Phase 1 were included in the efficacy analysis together with participants of the same indication in Stage 1 of Phase 2. Expected enrollment was 3–12 DLT-evaluable patients in Phase 1 and 37 (Cohort A1), 25 (Cohort A2), 29 (Cohort B), and 27 (Cohort C) patients in Phase 2 (if Stages 1 and 2 were both completed). A prespecified, interim efficacy analysis was planned independently for each cohort. The criteria required to advance a treatment cohort from Phase 2, Stage 1 to Stage 2 of Phase 2 were: CR in 4/17 (23.5%) patients in Cohort A1, and CR or PR in 3/12 (25.0%) patients in Cohort A2, 8/18 (44.4%) patients in Cohort B, and 3/10 (30.0%) patients in Cohort C. The actual number of patients enrolled per cohort was based on the interim analysis results, which was preplanned specifically to avoid treating patients if the combination did not have a synergistic effect.

## 2.2 | Procedures

In Phase 1, patients received a starting dose of Isa (10 mg/kg) every week in Cycle 1, every 2 weeks in Cycles 2–6, and every 3 weeks thereafter. Cemi was given at 250 mg every 2 weeks in Cycles 1–6, and at 350 mg every 3 weeks thereafter. The cycle duration was 28 days for Cycles 1–6, then 21 days in subsequent cycles. All participants received the following premedications (or equivalent), 30–60 min before Isa infusion, to prevent or reduce the incidence or severity of infusion reactions: oral acetaminophen 650–1000 mg, ranitidine 50 mg intravenously (IV), diphenhydramine 25–50 mg IV, methylprednisolone 100 mg IV, and oral montelukast 10 mg.

## 2.3 | Outcomes

In Phase 1, safety and tolerability were assessed based on DLTs in Cycle 1, treatment-emergent adverse events (TEAEs) or serious TEAEs, and laboratory abnormalities. TEAEs and laboratory abnormalities were graded using the National Cancer Institute Common Terminology Criteria for Adverse Events version 5.0.

Disease response was determined using positron emission tomography and assessed using the Lugano response criteria, 2014.<sup>23</sup> For Phase 2, CR rate was defined as the proportion of participants who had complete metabolic response (CMR) as best overall response. Objective response rate was defined as the proportion of participants with CMR or PR as best overall response.

Key secondary endpoints were duration of response (DoR) and progression-free survival (PFS).

The all-treated population was the primary analysis population for efficacy and safety analyses and included all participants who received  $\geq 1$  Isa or Cemi dose.

## 2.4 | Pharmacokinetics

Blood samples were collected at selected time points during Cycle 1 (predose, end of infusion [EOI], EOI+4h, start of infusion [SOI]+72h, SOI+144h) to perform Isa pharmacokinetics by non-compartmental analysis using Phoenix WinNonlin® version 8.2 (Pharsight). Gyrolab Platform, a quantitative Sandwich immunoassay using biotinylated anti-Isa antibodies bound by streptavidin beads within the Gyrolab Bioaffy CD microstructure for capture and Alexa Fluor® 647-conjugated CD38 antibody for detection, was used to measure functional Isa (Isa with  $\geq 1$  site available to bind target) plasma levels, with a lower limit of quantitation of 5.0  $\mu\text{g/ml}$  and an upper limit of quantitation of 500  $\mu\text{g/ml}$ .

## 2.5 | Statistical analysis

The sample size was determined based on the primary efficacy endpoint. An interim efficacy analysis was performed when the first 18 (Cohort A1), 12 (Cohort A2), 17 (Cohort B), and 11 (Cohort C) patients in Phase 2 had been treated and the last patient in Phase 2 had been followed up for 24 weeks (data cutoff: 5 May 2020, for Cohorts B and C; 18 August 2020, for Cohort A1; 15 February 2021, for Cohort A2).

CR and ORR rates were summarized using descriptive statistics. A 90% two-sided confidence interval (CI) was computed using the Clopper–Pearson method. Efficacy evaluation was based on Simon's 2-stage design with 85% power at a 1-sided alpha level of 5% for each cohort. Duration of response, median PFS, and 95% CIs were calculated using the Kaplan–Meier method. Individual concentrations and pharmacokinetic parameters of Isa were summarized by descriptive statistics.

## 3 | RESULTS

### 3.1 | Patients

In cohorts A1, A2, B, and C, 18, 12, 17, and 11 patients were enrolled, respectively. Patient baseline characteristics are shown in Table 1. In Phase 1, 6 patients in each cohort were treated with a starting dose of Isa + Cemi to determine the RP2D. No DLTs were observed during Cycle 1; thus, the starting dose was confirmed as the RP2D, obviating dose de-escalation.

Exposure to Isa + Cemi was longer in the cHL cohorts compared with the DLBCL and PTCL cohorts. Median (range) duration of exposure and number of cycles, respectively were 33.0 (6–69) weeks and 8.5 (1–21) in the cHL anti-PD-1/PD-L1 naïve cohort, 36.1 (4–83) weeks and 10.0 (1–25) in the cHL anti-PD-1/PD-L1 progressors cohort, 4.0 (2–41) weeks and 1.0 (1–11) in the DLBCL cohort, and 4.1 (2–38) weeks and 1.0 (1–10) in the PTCL cohort.

### 3.2 | Safety

TEAEs were reported in 83.3% of the patients in the cHL anti-PD-1/PD-L1 naïve cohort and in all patients in the remaining cohorts

(Table 2). Grade  $\geq 3$  and serious TEAEs, respectively, were more frequent in the DLBCL (70.6% and 58.8%) and PTCL (81.8% and 63.6%) cohorts than in the cHL cohorts (5.6% and 11.1% [cHL anti-PD-1/PD-L1 naïve], 8.3% and 16.7% [cHL anti-PD-1/PD-L1

TABLE 1 Patient baseline characteristics

	Cohort A1: cHL (anti-PD-1/PD-L1 naïve) (n = 18)	Cohort A2: cHL (anti-PD-1/PD-L1 progressors) (n = 12)	Cohort B: DLBCL (n = 17)	Cohort C: PTCL (n = 11)
Age, years, median (range)	36.0 (21–87)	33.0 (19–68)	64.0 (23–75)	69.0 (50–77)
Male	10 (55.6)	7 (58.3)	12 (70.6)	7 (63.6)
ECOG performance status				
0	14 (77.8)	9 (75.0)	5 (29.4)	3 (27.3)
1	4 (22.2)	3 (25.0)	11 (64.7)	8 (72.7)
2	0	0	1 (5.9)	0
Staging				
Stage I	0	0	0	0
Stage II	1 (5.6)	4 (33.3)	1 (5.9)	1 (9.1)
Stage II bulky	1 (5.6)	0	1 (5.9)	0
Stage III	4 (22.2)	4 (33.3)	3 (17.6)	1 (9.1)
Stage IV	12 (66.7)	4 (33.3)	12 (70.6)	9 (81.8)
Number of prior regimens				
1	0	0	0	10 (90.9)
2	0	0	14 (82.4)	0
>2	18 (100)	12 (100)	3 (17.6)	1 (9.1)
Subtype				
Lymphocyte-rich cHL	1 (5.6)	1 (9.1)	NA	NA
Mixed-cellularity cHL	3 (16.7)	2 (18.2)	NA	NA
Nodular-sclerosis cHL	14 (77.8)	8 (72.7)	NA	NA
DLBCL, NOS	NA	NA	12 (70.6)	NA
High-grade lymphomas with translocations of MYC and BCL2 and/or BCL6 (double/triple-hit lymphoma)	NA	NA	1 (5.9)	NA
Other	NA	NA	3 (17.6)	NA
T-cell/histiocyte-rich large B-cell lymphoma	NA	NA	1 (5.9)	NA
Angioimmunoblastic T-cell lymphoma	NA	NA	NA	5 (45.5)
PTCL, NOS	NA	NA	NA	6 (54.5)
Time from initial diagnosis to first dose in years, median (range)	2.56 (0.8–8.3)	3.38 (1.3–20.9)	1.19 (0.3–7.7)	1.26 (0.3–6.5)
International Prognostic Score at study entry <sup>a</sup>				
0	0	2 (16.7)	0	0
1	4 (22.2)	4 (33.3)	1 (5.9)	1 (9.1)
2	6 (33.3)	3 (25.0)	1 (5.9)	2 (18.2)
3	4 (22.2)	3 (25.0)	10 (58.8)	5 (45.5)
4	1 (5.6)	0	4 (23.5)	3 (27.3)

TABLE 1 (Continued)

	Cohort A1: cHL (anti-PD-1/ PD-L1 naïve) (n = 18)	Cohort A2: cHL (anti-PD-1/PD- L1 progressors) (n = 12)	Cohort B: DLBCL (n = 17)	Cohort C: PTCL (n = 11)
5	2 (11.1)	0	1 (5.9)	0
6	1 (5.6)	0	0	0

Note: All data are shown as n (%), except where otherwise indicated.

Abbreviations: BCL, B-cell lymphoma; cHL, classic Hodgkin's lymphoma; DLBCL, diffuse large B-cell lymphoma; ECOG, Eastern Cooperative Oncology Group; MYC, myelocytomatosis; NA, not applicable; NOS, not otherwise specified; PD-1, programmed death-1; PD-L1, programmed death ligand-1; PTCL, peripheral T-cell lymphoma.

<sup>a</sup>Different risk factors are used to calculate the International Prognostic Score for cHL, DLBCL, and PTCL. For cHL cohorts, 1 point is added with the presence of each of the following criteria: age  $\geq 45$  years; albumin  $< 4$  g/dl; hemoglobin  $< 10.5$  g/dl; leukocytosis (white blood cell count  $\geq 15,000/\text{mm}^3$ ); lymphocytopenia (lymphocyte count  $< 8\%$  of white blood cell count, and/or lymphocyte count  $< 600/\text{mm}^3$ ); male; stage IV disease. For DLBCL and PTCL cohorts, 1 point is added with the presence of each of the following criteria: age  $> 60$ ; Ann Arbor stage III or IV; ECOG performance status  $\geq 2$ ; serum lactate dehydrogenase level  $> 1 \times$  normal;  $> 1$  extranodal site.

TABLE 2 Safety summary by cohort, all-treated population

	Cohort A1: cHL (anti-PD-1/ PD-L1 naïve) (n = 18)	Cohort A2: cHL (anti-PD-1/PD-L1 progressors) (n = 12)	Cohort B: DLBCL (n = 17)	Cohort C: PTCL (n = 11)
Any TEAE	15 (83.3)	12 (100)	17 (100)	11 (100)
Grade $\geq 3$ TEAE	1 (5.6)	1 (8.3)	12 (70.6)	9 (81.8)
Grade 5 TEAE (fatal outcome)	0	0	4 (23.5)	2 (18.2)
SAEs	2 (11.1)	2 (16.7)	10 (58.8)	7 (63.6)
Treatment-related <sup>a</sup> TEAEs	9 (50.0)	11 (91.7)	9 (52.9)	8 (72.7)
Treatment-related <sup>a</sup> Grade $\geq 3$ TEAE	0	0	1 (5.9)	3 (27.3)
Treatment-related SAE	0	1 (8.3)	2 (11.8)	2 (18.2)
TEAE leading to treatment discontinuation	0	0	1 (5.9)	3 (27.3)
Any AESI <sup>b</sup>	7 (38.9)	8 (66.7)	7 (41.2)	7 (63.6)
Any IR	7 (38.9)	9 (75.0)	8 (47.1)	8 (72.7)

Note: All data are shown as n (%).

Abbreviations: AE, adverse event; AESI, adverse event of special interest; cHL, classic Hodgkin's lymphoma; DLT, dose-limiting toxicity; IR, infusion reaction; PD-1, programmed death-1; PD-L1, programmed death ligand-1; PI3K, phosphoinositide 3-kinase; PTCL, peripheral T-cell lymphoma; SAE, serious adverse event; TEAE, treatment-emergent adverse event.

<sup>a</sup>Treatment-related TEAEs are TEAEs related to at least one drug of the combination.

<sup>b</sup>AESIs include Grade  $\geq 2$  IRs, Grade  $\geq 3$  immune-related TEAEs, immune-related AEs of any grade in a patient previously treated with a PI3K inhibitor (only applicable for patients who received cemiplimab), DLTs as defined in Phase 1, pregnancy, symptomatic overdose with investigational medicinal product/non-investigational medicinal product.

progressors)). However, treatment-related any-grade, Grade  $\geq 3$ , and serious TEAEs, respectively, were less frequent across all cohorts (50.0%, 0%, 0% [cHL anti-PD-1/PD-L1 naïve]; 91.7%, 0%, 8.3% [cHL anti-PD-1/PD-L1 progressors]; 52.9%, 5.9%, 11.8% [DLBCL]; 72.7%, 27.3%, 18.2% [PTCL]). No patients in the cHL cohorts reported TEAEs leading to definitive discontinuation, compared with 5.9% in the DLBCL cohort and 27.3% in the PTCL cohort (Table 2).

No Grade 5 (fatal) TEAEs were reported in the cHL cohorts. There were 4 deaths reported during the on-treatment period in the DLBCL cohort (2 progressive disease, 1 intestinal perforation, 1

urinary tract infection) and 2 deaths in the PTCL cohort (1 unknown cause, 1 progressive disease); however, no deaths were treatment-related (Table 2).

TEAEs reported in  $\geq 20\%$  of patients are shown in Table 3. Most TEAEs were Grade 1/2. Infusion-related reactions were the most common, with an incidence of 38.9%, 75.0%, 52.9%, and 72.7% in cHL anti-PD-1/PD-L1 naïve, cHL anti-PD-1/PD-L1 progressor, DLBCL, and PTCL cohorts, respectively. Among Grade  $\geq 3$  TEAEs, infusion-related reactions and pyrexia were reported in 1 (9.1%) patient each in the PTCL cohort, peripheral edema and abdominal pain in 1

TABLE 3 TEAEs in  $\geq 20\%$  of patients by cohort

	Cohort A1: cHL (anti-PD-1/PD-L1 naïve) (n = 18)		Cohort A2: cHL (anti-PD-1/PD-L1 progressors) (n = 12)		Cohort B: DLBCL (n = 17)		Cohort C: PTCL (n = 11)	
	All grades	Grade $\geq 3$	All grades	Grade $\geq 3$	All grades	Grade $\geq 3$	All grades	Grade $\geq 3$
Any event	15 (83.3)	1 (5.6)	12 (100)	1 (8.3)	17 (100)	12 (70.6)	11 (100)	9 (81.8)
Infusion-related reaction	7 (38.9)	0	9 (75.0)	0	9 (52.9)	0	8 (72.7)	1 (9.1)
Pyrexia	4 (22.2)	0	3 (25.0)	0	2 (11.8)	0	2 (18.2)	1 (9.1)
Diarrhea	3 (16.7)	0	3 (25.0)	0	4 (23.5)	0	1 (9.1)	0
Peripheral edema	3 (16.7)	0	0	0	5 (29.4)	1 (5.9)	1 (9.1)	0
Pruritus	2 (11.1)	0	3 (25.0)	0	0	0	1 (9.1)	0
Abdominal pain	2 (11.1)	0	1 (8.3)	0	5 (29.4)	1 (5.9)	0	0
Decreased appetite	2 (11.1)	0	0	0	4 (23.5)	2 (11.8)	0	0
Nausea	1 (5.6)	0	4 (33.3)	0	4 (23.5)	0	0	0
Fatigue	0	0	1 (8.3)	0	4 (23.5)	0	1 (9.1)	0
Hematological laboratory abnormalities								
Anemia	16 (88.9)	1 (5.6)	7 (58.3)	0	16 (100)	2 (12.5)	11 (100)	2 (18.2)
Lymphopenia	12 (66.7)	5 (27.8)	3 (25.0)	1 (8.3)	14 (87.5)	7 (43.8)	10 (90.9)	4 (36.4)
Neutropenia	3 (16.7)	0	-	-	6 (37.5)	3 (18.8)	6 (54.5)	2 (18.2)
Leukopenia	10 (55.6)	0	2 (16.7)	0	13 (81.3)	3 (18.8)	8 (72.7)	2 (18.2)
Thrombocytopenia	7 (38.9)	0	3 (25.0)	0	11 (68.8)	2 (12.5)	8 (72.7)	4 (36.4)

Note: All data are shown as n (%).

Abbreviations: cHL, classic Hodgkin's lymphoma; DLBCL, diffuse large B-cell lymphoma; PD-1, programmed death-1; PD-L1, programmed death ligand-1; PTCL, peripheral T-cell lymphoma; TEAE, treatment-emergent adverse event.

(5.9%) patient each, and decreased appetite in 2 (11.8%) patients in the DLBCL cohort. Other commonly reported TEAEs were pyrexia (22.2%) in the cHL anti-PD-1/PD-L1 naïve cohort; nausea (33.3%), pyrexia (25.0%), diarrhea (25.0%), and pruritus (25.0%) in the cHL anti-PD-1/PD-L1 progressors cohort; and abdominal pain (29.4%), peripheral edema (29.4%), decreased appetite (23.5%), diarrhea (23.5%), fatigue (23.5%), and nausea (23.5%) in the DLBCL cohort.

The most commonly reported all-grade hematological laboratory abnormality was anemia (88.9% [cHL anti-PD-1/PD-L1 naïve], 58.3% [cHL anti-PD-1/PD-L1 progressors], 100% [DLBCL and PTCL]). The most frequent Grade  $\geq 3$  hematological laboratory abnormalities were lymphopenia in all cohorts (27.8% [cHL anti-PD-1/PD-L1 naïve], 8.3% [cHL anti-PD-1/PD-L1 progressors], 43.8% [DLBCL], and 36.4% [PTCL]), and thrombocytopenia (36.4%) in the PTCL cohort (Table 3).

### 3.3 | Efficacy

Among the all-treated population, response rate was 55.6%, 33.3%, 5.9%, and 9.1% in cHL anti-PD-1/PD-L1 naïve, cHL anti-PD-1/PD-L1 progressor, DLBCL, and PTCL cohorts, respectively (Table 4). Complete metabolic response was observed in 5 (27.8%) cHL anti-PD-1/PD-L1 naïve patients, 2 (16.7%) cHL anti-PD-1/PD-L1 progressors,

and 1 (5.9%) DLBCL patient. No PTCL patients achieved CMR. Among the 10 responders in the cHL anti-PD-1/PD-L1 naïve cohort, five experienced radiological progression or death with a median (range) DoR of 5.79 (1.41–9.3) months; 2/4 responders in the cHL anti-PD-1/PD-L1 progressors cohort had a DoR of 3.19 and 7.56 months.

Median PFS (95% CI) was 8.38 months (2.73–not calculable [NC]), 8.28 months (2.60–NC), 2.37 months (0.46–2.69), and 2.66 months (0.43–2.99) in cHL anti-PD-1/PD-L1 naïve, cHL anti-PD-1/PD-L1 progressors, DLBCL, and PTCL cohorts, respectively (Figure 2).

### 3.4 | Pharmacokinetics

Mean  $I_{sa}$  maximum plasma concentration ( $C_{max}$ ) and area under the concentration versus time curve over 1 week ( $AUC_{1\text{ week}}$ ) were, respectively, 226  $\mu\text{g/ml}$  and 22,500  $\mu\text{g}\cdot\text{h/ml}$  in the cHL anti-PD-1/PD-L1 naïve cohort, 265  $\mu\text{g/ml}$  and 26,600  $\mu\text{g}\cdot\text{h/ml}$  in the cHL anti-PD-1/PD-L1 progressors cohort, 253  $\mu\text{g/ml}$  and 23,700  $\mu\text{g}\cdot\text{h/ml}$  in the DLBCL cohort, and 181  $\mu\text{g/ml}$  and 15,000  $\mu\text{g}\cdot\text{h/ml}$  in the PTCL cohort (Table 5). Pharmacokinetic analyses suggested no effect of Cemi on  $I_{sa}$  exposure ( $C_{max}$ ,  $AUC_{1\text{ week}}$ ).

TABLE 4 Summary of response rate per Lugano 2014 criteria, all-treated population

	Cohort A1: cHL (anti-PD-1/ PD-L1 naïve) (n = 18)	Cohort A2: cHL (anti-PD-1/ PD-L1 progressors) (n = 12)	Cohort B: DLBCL (n = 17)	Cohort C: PTCL (n = 11)
Overall response				
Responders (CR or PR)	10 (55.6)	4 (33.3)	1 (5.9)	1 (9.1)
Best overall response				
Complete metabolic response/complete response	5 (27.8)	2 (16.7)	1 (5.9)	0
Partial metabolic response/partial response	5 (27.8)	2 (16.7)	0	1 (9.1)
No metabolic response/stable disease	1 (5.6)	3 (25.0)	0	1 (9.1)
Progressive metabolic disease/ progressive disease	6 (33.3)	5 (41.7)	7 (41.2)	4 (36.4)
Not evaluable <sup>a</sup>	1 (5.6)	0	9 (52.9)	5 (45.5)

Note: All data are shown as n (%).

Abbreviations: cHL, classic Hodgkin's lymphoma; CR, complete response; DLBCL, diffuse large B-cell lymphoma; PD-1, programmed death-1; PD-L1, programmed death ligand-1; PR, partial response; PTCL, peripheral T-cell lymphoma.

<sup>a</sup>Including patients with no post-baseline evaluation prior to the initiation of a new anti-cancer therapy or the data cutoff date.

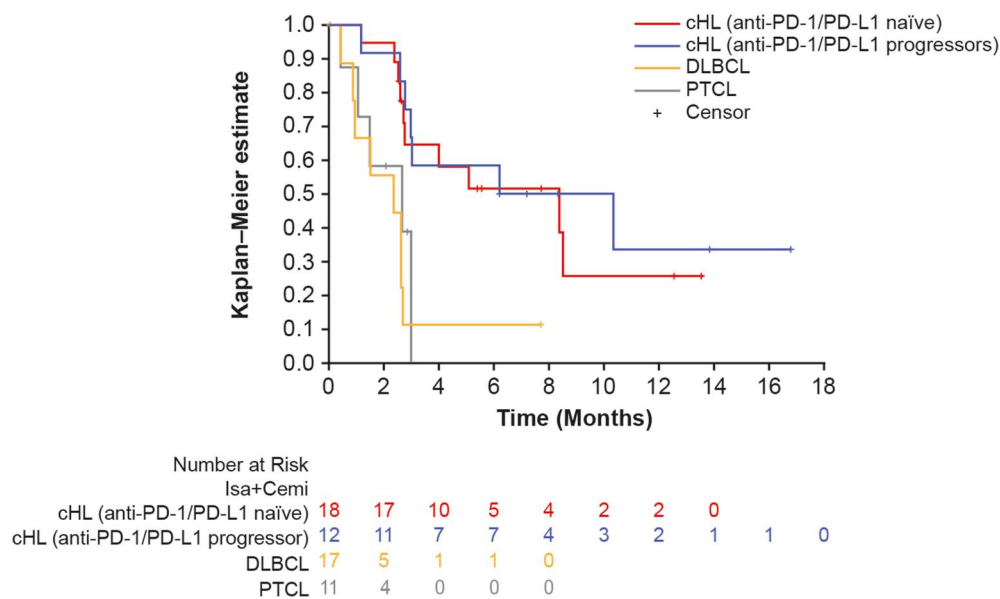


FIGURE 2 Progression-free survival (PFS): Kaplan-Meier estimates by cohort, all-treated population. Cemi, cemiplimab; cHL, classic Hodgkin lymphoma (HL); DLBCL, diffuse large B-cell lymphoma; PD-1, programmed death-1; PD-L1, programmed death ligand-1; PTCL, peripheral T-cell lymphoma; Isa, isatuximab

## 4 | DISCUSSION

In patients with relapsed/refractory lymphoma, treatment beyond the first line remains challenging and represents a significant unmet need.<sup>24–26</sup> Monoclonal antibodies that block the PD-1/PD-L1 axis have demonstrated limited clinical benefit in lymphoma. Although nivolumab and pembrolizumab are approved for relapsed/refractory cHL, only a small subset (around 20%–28%) of the patients achieved complete remission.<sup>3,4</sup> Similar outcomes (12% CR) were reported with Cemi monotherapy in an early-phase study in patients with HL.<sup>8</sup>

Combining nivolumab with brentuximab vedotin (anti-CD30 antibody-drug conjugate) increased CR rate to 61% in the interim analysis of a Phase 1/2 study of relapsed/refractory patients with cHL.<sup>27</sup> In a Phase 1b study with nivolumab monotherapy, ORR was achieved in 4/11 (36%) patients with DLBCL and 2/5 (40%) patients with PTCL.<sup>7</sup> Among patients with DLBCL treated with Cemi monotherapy, ORR was achieved in 3/18 (17%) patients.<sup>8</sup> Although the reason for suboptimal efficacy of these agents in lymphoma is unclear, their promising anti-tumor activity in a subset of lymphomas has spurred interest in the development of newer, potentially more



TABLE 5 Isa pharmacokinetic parameters

Mean ± SD (Geometric mean) [CV%]	Cohort A1: cHL (anti-PD-1/PD-L1 naïve) (n = 17)	Cohort A2: cHL (anti-PD-1/PD-L1 progressors) (n = 12)	Cohort B: DLBCL (n = 14)	Cohort C: PTCL (n = 7)	All (N = 50)
$C_{max}$	226 ± 48.1	265 ± 38.8	253 ± 29.1	181 ± 35.7	237 ± 47.1
(µg/ml)	(221) [21]	(262) [15]	(251) [12]	(178) [20]	(232) [20]
$t_{max}^a$	5.95	5.23	5.26	4.57	5.17
(h) <sup>b</sup>	(2.00–8.92)	(3.00–8.83)	(2.60–10.5)	(2.33–7.45)	(2.00–10.5)
AUC <sub>1 week</sub>	22,500 ± 5770	26,600 ± 4030	23,700 ± 4960	15,000 ± 4680	22,700 ± 6030
(µg•h/mL)	(21,800) [26]	(26,300) [15] <sup>c</sup>	(23,200) [21]	(14,300) [31]	(21,800) [27] <sup>d</sup>

<sup>a</sup>Median.<sup>b</sup>Min–max.<sup>c</sup>n = 11.<sup>d</sup>n = 49.

Abbreviations: AUC, area under curve; cHL, classic Hodgkin's lymphoma;  $C_{max}$ , maximum concentration; CV, coefficient of variation; DLBCL, diffuse large B-cell lymphoma; Isa, isatuximab; PD-1, programmed death-1; PD-L1, programmed death ligand-1; PTCL, peripheral T-cell lymphoma; SD, standard deviation;  $t_{max}$ , time to reach  $C_{max}$ .

effective checkpoint inhibitors and combinations of agents with different mechanisms of action for the treatment of patients with lymphoma.<sup>1</sup>

The expression of CD38 in lymphoma, together with preclinical evidence for anti-CD38 antibodies against CD38+ lymphoma, suggests potential utility for these agents in patients with CD38+ lymphoma. The anti-CD38 antibodies, Isa, daratumumab, and MOR202 kill CD38+ lymphoma cells via antibody-dependent cellular cytotoxicity and antibody-dependent cellular phagocytosis.<sup>9,16,17</sup> In addition, Isa has strong anti-apoptotic activity in lymphoma cells in the absence of crosslinking agents.<sup>17</sup>

Several studies suggest a role for CD38 in the immunomodulatory and pro-tumoral microenvironment. CD38 is expressed in many immunosuppressive cell types<sup>9,28–31</sup>; targeting CD38-expressing immune cells triggers anti-tumor immunomodulatory mechanisms.<sup>17,32–36</sup> CD38 is upregulated in mouse models of lung cancer and melanoma that have acquired resistance to anti-PD-1/anti-PD-L1 blockade, and correlates with CD8+ T-cell impairment.<sup>28,29,37</sup> Concurrent inhibition of CD38 and PD-L1 in these murine models has been shown to substantially reduce primary tumor burden and metastases.<sup>18</sup>

To address whether co-inhibition of PD-1 and CD38 may benefit patients with lymphoma, we assessed the safety, efficacy, and pharmacokinetics of Isa + Cemi in patients with cHL, DLBCL, and PTCL. During the Phase 1 safety run-in part of this study, no DLTs were observed during Cycle 1 and the RP2D was confirmed for Phase 2. Isa + Cemi had a manageable safety profile with no new safety signals compared with known effects of the individual drugs. Infusion-related reactions were the most common events. Grade ≥3, Grade 5, and serious TEAEs were higher in the DLBCL and PTCL cohorts compared with the cHL cohorts. Treatment-related TEAEs were less frequent in all cohorts.

Modest clinical efficacy was observed in patients with cHL, with responses achieved in patients who had or had not previously received anti-PD-1/PD-L1 therapy. However, the study was

terminated in view of other more efficacious therapeutic options available for this patient population. For the DLBCL and PTCL cohorts, results of the interim efficacy analysis did not meet pre-specified criteria (i.e., ≥8/17 and ≥3/11 responders in the DLBCL and PTCL cohorts, respectively) to continue enrollment in Stage 2 of Phase 2. Consequently, accrual was stopped for the DLBCL and PTCL cohorts.

Most patients with DLBCL were primary refractory/bulky and discontinued within weeks from treatment initiation; in such patients, a more aggressive combination therapy may be needed. Overall, these results demonstrated that the combination was not very active in DLBCL and PTCL populations. This is consistent with limited clinical benefit of daratumumab monotherapy in Phase 2 studies with patients with relapsed/refractory B-cell NHL subtypes and natural killer/T-cell lymphoma.<sup>38,39</sup> The clinical development of next-generation anti-CD38 antibodies, as well as new modalities targeting this tumor antigen, may provide more effective treatment options for improved outcomes in the advanced lymphoid malignancy space.

Pharmacokinetic parameters of Isa in the current study were consistent with those observed in a recent Phase 1/2 study of Isa + Cemi in patients with metastatic castration-resistant prostate cancer or advanced non-small cell lung cancer, where the same assay method was used, suggesting no effect of Cemi on Isa exposure ( $C_{max}$ , AUC<sub>1week</sub>).<sup>40</sup> Similar to the current study in lymphoma, this study demonstrated a lack of efficacy of Isa + Cemi in small patient cohorts with these advanced malignancies.

## 5 | CONCLUSION

Isa + Cemi had a manageable safety profile. Limited clinical efficacy was observed in patients with cHL who had prior anti-PD-1/PD-L1 exposure, as well as in those who did not. However, we did not observe a synergistic effect of Isa in combination with Cemi in patients with cHL, DLBCL, or PTCL.

## AUTHOR CONTRIBUTIONS

Rao Saleem was responsible for study oversight. Carmelo Carlo-Stella, Pier Luigi Zinzani, Anna Sureda, Luis Araújo, Olivier Casasnovas, Cecilia Carpio, Su-Peng Yeh, Krime Bouabdallah, Guillaume Cartron, Won Seog Kim, Raul Cordoba, Youngil Koh, Alessandro Re, Daniela Alves, Martine Chamuleau, Steven Le Guill, Armando López-Guillermo, Ilídia Moreira, Marjolein W. M. van der Poel, and Vincent Ribrag were investigators in the study and contributed to data acquisition and analysis. Vincent Ribrag designed the overall study and for DLBCL, Carmelo Carlo-Stella for cHL, and Pier Luigi Zinzani for PTCL. Giovanni Abbadessa, Robin Meng, Ran Ji, Lucie Lépine, and Rao Saleem contributed to analysis and interpretation of data for the work. All authors revised the work for important intellectual content and assume responsibility for data integrity and the decision to submit this manuscript for publication, had full access to the study data, edited and reviewed manuscript drafts, and approved the final version for submission.

## ACKNOWLEDGMENTS

This study was sponsored by Sanofi. The authors thank the participating patients and their families, and the study centers and investigators for their contributions to the study. Medical writing support was provided by Smitha Reddy, PhD, of Elevate Scientific Solutions, contracted by Sanofi for publication support services.

## CONFLICT OF INTEREST

CC-S: *Advisory Role* – Sanofi; *Consultancy* – Sanofi. PLZ: *Honoraria* – Gilead, Incyte, Merck, Novartis, Roche, Sanofi, Takeda. AS: *Consultancy* – Bluebird, BMS, Genmab, Janssen, Kite, MSD, Novartis, Roche, Takeda; *Honoraria* – BMS, Janssen, Kite, MSD, Novartis, Roche, Sanofi, Takeda. LA: Nothing to disclose. OC: *Advisory Role* – Gilead/Kite, Roche, Takeda; *Consultancy* – AbbVie, BMS, Gilead/Kite, Janssen, MSD, Roche, Takeda; *Honoraria* – Gilead/Kite, Roche; *Research Funding* – Gilead/Kite, Roche, Takeda. CC: *Consultancy* – Regeneron, Takeda; *Honoraria* – BMS, Novartis, Takeda. S-PY: *Advisory Role* – AbbVie, Amgen, Astellas, Astex, Janssen, Novartis, Sanofi, Takeda; *Honoraria* – AbbVie, Amgen, Astellas, BMS, Janssen, AstraZeneca, Novartis, Roche, Sanofi, Takeda. KB: Nothing to disclose. GC: *Consultancy* – Celgene, Roche; *Honoraria* – AbbVie, Celgene, Gilead, Janssen, Novartis, Roche, Sanofi, Takeda. WSK: *Research Funding* – Celltrion, Kyowa Kirin, Pfizer, Roche, Sanofi. RC: *Advisory Role* – AbbVie, AstraZeneca, BeiGene, BMS, Incyte, Janssen, Kite, Kyowa Kirin, Lilly, Roche, Takeda; *Consultancy* – AbbVie, AstraZeneca, BeiGene, BMS, Incyte, Janssen, Kite, Kyowa Kirin, Lilly, Roche, Takeda; *Honoraria* – AbbVie, AstraZeneca, BMS, Janssen, Kite, Roche, Takeda; *Research Funding* – Pfizer. YK: Nothing to disclose. AR: Nothing to disclose. DA: *Advisory Role* – AbbVie, Roche; *Consultancy* – AbbVie, AstraZeneca, Gilead, Janssen, Roche, Takeda; *Honoraria* – AbbVie, AstraZeneca, Gilead, Janssen, Roche, Takeda. MC: *Advisory Role* – Novartis; *Research Funding* – Celgene, Genmab, Gilead. SLG: *Consultancy* – Roche; *Honoraria* – Roche. AL-G: *Consultancy* – Celgene/BMS, Gilead/Kite, Incyte, Janssen, Kern Pharma, Pfizer, Roche, Takeda;

*Honoraria* – Roche; *Research Funding* – Celgene/BMS, Janssen, Roche. IM: Nothing to disclose. MWMvdP: Nothing to disclose. GA, RM, RJ, LL, and RS are employed by Sanofi and may hold stock and/or stock options in the company. VR: *Advisory Role* – AstraZeneca; *Consultancy* – AstraZeneca, Gilead, Incyte, NanoString, Roche; *Honoraria* – AstraZeneca; *Research Funding* – argenx, Astex Pharmaceuticals, GSK.

## DATA AVAILABILITY STATEMENT

Qualified researchers can request access to patient-level data and related study documents including the clinical study report, study protocol with any amendments, blank case report forms, statistical analysis plan, and dataset specifications. Patient-level data will be anonymized, and study documents will be redacted to protect the privacy of trial participants. Further details on Sanofi's data-sharing criteria, eligible studies, and process for requesting access are at: <https://www.vivli.org>.

## ETHICS STATEMENT

The study was conducted in accordance with the Declaration of Helsinki, Council for International Organizations of Medical Sciences International Ethical Guidelines, and the International Conference on Harmonization Good Clinical Practice Guidelines. The relevant independent ethics committees and institutional review boards approved the study protocol. All participants provided written informed consent prior to study enrollment. Clinical trial registration: [ClinicalTrials.gov](https://www.clinicaltrials.gov), NCT03769181.

## ORCID

Pier Luigi Zinzani  <https://orcid.org/0000-0002-2112-2651>

## PEER REVIEW

The peer review history for this article is available at <https://publons.com/publon/10.1002/hon.3089>.

## REFERENCES

1. Tobin JWD, Bednarska K, Campbell A, Keane C. PD-1 and LAG-3 checkpoint blockade: potential avenues for therapy in B-cell lymphoma. *Cells*. 2021;10(5):1152. <https://doi.org/10.3390/cells10051152>
2. Zaja F, Tabanelli V, Agostinelli C, et al. CD38, BCL-2, PD-1, and PD-1L expression in nodal peripheral T-cell lymphoma: possible biomarkers for novel targeted therapies? *Am J Hematol*. 2017;92(1):E1-E2. <https://doi.org/10.1002/ajh.24571>
3. Younes A, Santoro A, Shipp M, et al. Nivolumab for classical Hodgkin's lymphoma after failure of both autologous stem-cell transplantation and brentuximab vedotin: a multicentre, multicohort, single-arm phase 2 trial. *Lancet Oncol*. 2016;17(9):1283-1294. [https://doi.org/10.1016/s1470-2045\(16\)30167-x](https://doi.org/10.1016/s1470-2045(16)30167-x)
4. Chen R, Zinzani PL, Fanale MA, et al. Phase II study of the efficacy and safety of pembrolizumab for relapsed/refractory classic Hodgkin lymphoma. *J Clin Oncol*. 2017;35(19):2125-2132. <https://doi.org/10.1200/jco.2016.72.1316>
5. Ansell SM, Minnema MC, Johnson P, et al. Nivolumab for relapsed/refractory diffuse large B-cell lymphoma in patients ineligible for or having failed autologous transplantation: a single-arm, phase II study. *J Clin Oncol*. 2019;37(6):481-489. <https://doi.org/10.1200/jco.18.00766>

6. Bennani NN, Pederson LD, Atherton P, et al. A Phase II study of nivolumab in patients with relapsed or refractory peripheral T-cell lymphoma. *Blood*. 2019;134(Suppl 1):467. <https://doi.org/10.1182/blood-2019-126194>
7. Lesokhin AM, Ansell SM, Armand P, et al. Nivolumab in patients with relapsed or refractory hematologic malignancy: preliminary results of a phase Ib study. *J Clin Oncol*. 2016;34(23):2698-2704. <https://doi.org/10.1200/jco.2015.65.9789>
8. Topp M, Borchmann P, Wagner-Johnston N, et al. Safety and preliminary antitumor activity of the anti-PD-1 monoclonal antibody cemiplimab (REGN2810) alone or in combination with REGN1979, an anti-CD20 x anti-CD3 bispecific antibody, in patients with B-lymphoid malignancies; 2017. Paper presented at: American Society of Hematology Annual Meeting; December 9–12, 2017.
9. van de Donk NW, Janmaat ML, Mutis T, et al. Monoclonal antibodies targeting CD38 in hematological malignancies and beyond. *Immunol Rev*. 2016;270(1):95–112. <https://doi.org/10.1111/imr.12389>
10. Atanackovic D, Steinbach M, Radhakrishnan SV, Luetkens T. Immunotherapies targeting CD38 in multiple myeloma. *Oncol Immunology*. 2016;5(11):e1217374. <https://doi.org/10.1080/2162402x.2016.1217374>
11. Di Gaetano R, Gasparetto V, Padoan A, et al. Flow cytometry CD4(+) CD26(-)CD38(+) lymphocyte subset in the microenvironment of Hodgkin lymphoma-affected lymph nodes. *Ann Hematol*. 2014;93(8):1319–1326. <https://doi.org/10.1007/s00277-014-2044-x>
12. Domingo-Domenech E, Domingo-Claros A, Gonzalez-Barca E, et al. CD38 expression in B-chronic lymphocytic leukemia: association with clinical presentation and outcome in 155 patients. *Haematologica*. 2002;87(10):1021–1027.
13. Keyhani A, Huh YO, Jendiroba D, et al. Increased CD38 expression is associated with favorable prognosis in adult acute leukemia. *Leuk Res*. 2000;24(2):153–159. [https://doi.org/10.1016/s0145-2126\(99\)00147-2](https://doi.org/10.1016/s0145-2126(99)00147-2)
14. Schwonzen M, Pohl C, Steinmetz T, et al. Immunophenotyping of low-grade B-cell lymphoma in blood and bone marrow: poor correlation between immunophenotype and cytological/histological classification. *Br J Haematol*. 1993;83(2):232–239. <https://doi.org/10.1111/j.1365-2141.1993.tb08277.x>
15. Calabretta E, Carlo-Stella C. The many facets of CD38 in lymphoma: from tumor-microenvironment cell interactions to acquired resistance to immunotherapy. *Cells*. 2020;9(4):802. <https://doi.org/10.3390/cells9040802>
16. de Weers M, Tai YT, van der Veer MS, et al. Daratumumab, a novel therapeutic human CD38 monoclonal antibody, induces killing of multiple myeloma and other hematological tumors. *J Immunol*. 2011;186(3):1840–1848. <https://doi.org/10.4049/jimmunol.1003032>
17. Deckert J, Wetzel MC, Bartle LM, et al. SAR650984, a novel humanized CD38-targeting antibody, demonstrates potent antitumor activity in models of multiple myeloma and other CD38+ hematologic malignancies. *Clin Cancer Res*. 2014;20(17):4574–4583. <https://doi.org/10.1158/1078-0432.ccr-14-0695>
18. Chen L, Diao L, Yang Y, et al. CD38-mediated immunosuppression as a mechanism of tumor cell escape from PD-1/PD-L1 blockade. *Cancer Discov*. 2018;8(9):1156–1175. <https://doi.org/10.1158/2159-8290.cd-17-1033>
19. Regeneron. Libtayo (Cemiplimab) Prescribing Information, 2021. Accessed January 25, 2022. [https://www.regeneron.com/downloads/libtayo\\_fpi.pdf](https://www.regeneron.com/downloads/libtayo_fpi.pdf)
20. Martin TG, Corzo K, Chiron M, et al. Therapeutic opportunities with pharmacological inhibition of CD38 with isatuximab. *Cells*. 2019;8(12):1522. <https://doi.org/10.3390/cells8121522>
21. Attal M, Richardson PG, Rajkumar SV, et al. Isatuximab plus pomalidomide and low-dose dexamethasone versus pomalidomide and low-dose dexamethasone in patients with relapsed and refractory multiple myeloma (ICARIA-MM): a randomised, multicentre, open-label, phase 3 study. *Lancet*. 2019;394(10214):2096–2107.
22. Moreau P, Dimopoulos MA, Yong K, et al. Isatuximab plus carfilzomib/dexamethasone versus carfilzomib/dexamethasone in patients with relapsed/refractory multiple myeloma: IKEMA Phase III study design. *Future Oncol*. 2020;16(2):4347–4358. <https://doi.org/10.2217/fo-2019-0431>
23. Cheson BD, Fisher RI, Barrington SF, et al. Recommendations for initial evaluation, staging, and response assessment of Hodgkin and non-Hodgkin lymphoma: the Lugano classification. *J Clin Oncol*. 2014;32(27):3059–3068. <https://doi.org/10.1200/jco.2013.54.8800>
24. Sheikh S, Kuruvilla J. Addressing an unmet need in relapsed or refractory Hodgkin lymphoma. *JCO Oncol Pract*. 2021;17(2):74–76. <https://doi.org/10.1200/op.20.01029>
25. Saleh K, Michot JM, Ribrag V. Updates in the treatment of peripheral T-cell lymphomas. *J Exp Pharmacol*. 2021;13:577–591. <https://doi.org/10.2147/jep.s262344>
26. Wang L, Li LR, Young KH. New agents and regimens for diffuse large B cell lymphoma. *J Hematol Oncol*. 2020;13(1):175. <https://doi.org/10.1186/s13045-020-01011-z>
27. Herrera AF, Moskowitz AJ, Bartlett NL, et al. Interim results of brentuximab vedotin in combination with nivolumab in patients with relapsed or refractory Hodgkin lymphoma. *Blood*. 2018;131(11):1183–1194. <https://doi.org/10.1182/blood-2017-10-811224>
28. Chen L, Diao L, Yang Y, et al. CD38 blockade overcomes the immune resistance to anti-PD-L1 therapy by boosting CD8 T cell response. *Cancer Res*. 2017;77(Suppl 13):567. <https://doi.org/10.1158/1538-7445.AM2017-567>
29. Chen L, Byers LA, Ullrich S, Wistuba I, Qin X, Gibbons DL. CD38 as a novel immune checkpoint and a mechanism of resistance to the blockade of the PD-1/PD-L1 axis. *J Clin Oncol*. 2017;35(Suppl 7):79. [https://doi.org/10.1200/JCO.2017.35.7\\_suppl.79](https://doi.org/10.1200/JCO.2017.35.7_suppl.79)
30. Karakasheva TA, Waldron TJ, Eruslanov E, et al. CD38-expressing myeloid-derived suppressor cells promote tumor growth in a murine model of esophageal cancer. *Cancer Res*. 2015;75(19):4074–4085. <https://doi.org/10.1158/0008-5472.can-14-3639>
31. Feng X, Zhang L, Acharya C, et al. Targeting CD38 suppresses induction and function of T regulatory cells to mitigate immunosuppression in multiple myeloma. *Clin Cancer Res*. 2017;23(15):4290–4300. <https://doi.org/10.1158/1078-0432.ccr-16-3192>
32. Abramson HN. Monoclonal antibodies for the treatment of multiple myeloma: an update. *Int J Mol Sci*. 2018;19(12):3924. <https://doi.org/10.3390/ijms19123924>
33. Jiang H, Acharya C, An G, et al. SAR650984 directly induces multiple myeloma cell death via lysosomal-associated and apoptotic pathways, which is further enhanced by pomalidomide. *Leukemia*. 2016;30(2):399–408. <https://doi.org/10.1038/leu.2015.240>
34. Kriegsmann K, Dittrich T, Neuber B, et al. Quantification of number of CD38 sites on bone marrow plasma cells in patients with light chain amyloidosis and smoldering multiple myeloma. *Cytometry B Clin Cytom*. 2018;94(5):611–620. <https://doi.org/10.1002/cyto.b.21636>
35. Moreno L, Perez C, Zabaleta A, et al. The mechanism of action of the anti-CD38 monoclonal antibody isatuximab in multiple myeloma. *Clin Cancer Res*. 2019;25(10):3176–3187. <https://doi.org/10.1158/1078-0432.ccr-18-1597>
36. Zhu C, Song Z, Wang A, et al. Isatuximab acts through Fc-dependent, independent, and direct pathways to kill multiple myeloma cells. *Front Immunol*. 2020;11:1771. <https://doi.org/10.3389/fimmu.2020.01771>
37. Verma V, Shrimali RK, Ahmad S, et al. PD-1 blockade in subprimed CD8 cells induces dysfunctional PD-1(+)/CD38(hi) cells and anti-PD-1 resistance. *Nat Immunol*. 2019;20(9):1231–1243. <https://doi.org/10.1038/s41590-019-0441-y>

38. Salles G, Gopal AK, Minnema MC, et al. Phase 2 study of daratumumab in relapsed/refractory mantle-cell lymphoma, diffuse large B-cell lymphoma, and follicular lymphoma. *Clin Lymphoma Myeloma Leuk*. 2019;19(5):275-284. <https://doi.org/10.1016/j.clml.2018.12.013>
39. Huang H, Zhu J, Yao M, et al. Daratumumab monotherapy for patients with relapsed or refractory natural killer/T-cell lymphoma, nasal type: an open-label, single-arm, multicenter, phase 2 study. *J Hematol Oncol*. 2021;14(1):25. <https://doi.org/10.1186/s13045-020-01020-y>
40. Zucali PA, Lin CC, Carthon B, et al. Targeting CD38 and PD-1 with isatuximab plus cemiplimab in patients with advanced solid malignancies: results from a phase I/II open-label, multicenter study. *J*

*Immunother Cancer*. 2022;10(1):e003697. <https://doi.org/10.1136/jitc-2021-003697>

**How to cite this article:** Carlo-Stella C, Zinzani PL, Sureda A, et al. A phase 1/2, open-label, multicenter study of isatuximab in combination with cemiplimab in patients with lymphoma. *Hematol Oncol*. 2023;41(1):108-119. <https://doi.org/10.1002/hon.3089>