



## REVIEW

# Dual inhibition of TGF- $\beta$ and PD-L1: a novel approach to cancer treatment

James L. Gulley<sup>1</sup> , Jeffrey Schlom<sup>2</sup>, Mary Helen Barcellos-Hoff<sup>3</sup>, Xiao-Jing Wang<sup>4</sup>, Joan Seoane<sup>5</sup>, Francois Audhuy<sup>6</sup>, Yan Lan<sup>6</sup>, Isabelle Dussault<sup>6,\*</sup> and Aristidis Moustakas<sup>7</sup> 

<sup>1</sup> Genitourinary Malignancies Branch, Center for Cancer Research, National Cancer Institute, Bethesda, MD, USA

<sup>2</sup> Laboratory of Tumor Immunology and Biology, Center for Cancer Research, National Cancer Institute, Bethesda, MD, USA

<sup>3</sup> Department of Radiation Oncology, University of California San Francisco, San Francisco, CA, USA

<sup>4</sup> Department of Pathology, University of Colorado, Aurora, CO, USA

<sup>5</sup> ICREA, Vall D'Hebron Institute of Oncology, CIBERONC, Universitat Autònoma de Barcelona, Barcelona, Spain

<sup>6</sup> EMD Serono, Billerica, MA, USA

<sup>7</sup> Department of Medical Biochemistry and Microbiology, Science for Life Laboratory, Uppsala University, Uppsala, Sweden

## Keywords

immune checkpoint inhibitor; PD-L1; TGF- $\beta$ ; tumor microenvironment

## Correspondence

J. L. Gulley, Genitourinary Malignancies Branch, Center for Cancer Research, National Cancer Institute, Building 10, Room 13N240, Bethesda, MD 20892-1750, USA  
 Tel: +1 301 480 7164  
 E-mail: gulleyj@mail.nih.gov

## Present address

\*Fusion Pharmaceuticals, Boston, MA, USA

(Received 12 July 2021, revised 3 November 2021, accepted 30 November 2021, available online 4 January 2022)

doi:10.1002/1878-0261.13146

Transforming growth factor- $\beta$  (TGF- $\beta$ ) and programmed death ligand 1 (PD-L1) initiate signaling pathways with complementary, nonredundant immunosuppressive functions in the tumor microenvironment (TME). In the TME, dysregulated TGF- $\beta$  signaling suppresses antitumor immunity and promotes cancer fibrosis, epithelial-to-mesenchymal transition, and angiogenesis. Meanwhile, PD-L1 expression inactivates cytotoxic T cells and restricts immunosurveillance in the TME. Anti-PD-L1 therapies have been approved for the treatment of various cancers, but TGF- $\beta$  signaling in the TME is associated with resistance to these therapies. In this review, we discuss the importance of the TGF- $\beta$  and PD-L1 pathways in cancer, as well as clinical strategies using combination therapies that block these pathways separately or approaches with dual-targeting agents (bispecific and bifunctional immunotherapies) that may block them simultaneously. Currently, the furthest developed dual-targeting agent is bintrafusp alfa. This drug is a first-in-class bifunctional fusion protein that consists of the extracellular domain of the TGF- $\beta$ RII receptor (a TGF- $\beta$  'trap') fused to a human immunoglobulin G1 (IgG1) monoclonal antibody blocking PD-L1. Given the immunosuppressive effects of the TGF- $\beta$  and PD-L1 pathways within the TME, colocalized and simultaneous inhibition of these pathways may potentially improve clinical activity and reduce toxicity.

## Abbreviations

bFGF, basic fibroblast growth factor; CAF, cancer-associated fibroblast; CTL, cytotoxic T lymphocyte; CTLA-4, cytotoxic T-lymphocyte-associated protein 4; DC, dendritic cell; EGFR, epidermal growth factor receptor; EMT, epithelial-mesenchymal transition; GARP, glycoprotein A repetitions predominant; GM-CSF, granulocyte-macrophage colony-stimulating factor; HCC, hepatocellular carcinoma; HMGA2, high mobility group A2; HR, hazard ratio; LAP, latency-associated peptide; mAb, monoclonal antibody; MDSC, myeloid-derived suppressor cell; NK, natural killer; NR, not reached; NSCLC, non-small-cell lung cancer; ORR, objective response rate; OS, overall survival; PARPi, poly ADP-ribose polymerase inhibition therapy; PD-1, programmed death 1; PDGF, platelet-derived growth factor; PD-L1, programmed death ligand 1; PR, partial response; RCC, renal cell carcinoma; SCCHN, squamous cell carcinoma of the head and neck; siRNA, small interfering RNA; SOC, standard of care; TAM, tumor-associated macrophage; TEAE, treatment-emergent adverse event; TGF- $\beta$ , transforming growth factor- $\beta$ ; TGF- $\beta$ R, transforming growth factor- $\beta$  receptor; TME, tumor microenvironment; TRAE, treatment-related adverse event; T<sub>reg</sub>, regulatory T cell; UC, urothelial carcinoma; VEGF, vascular endothelial growth factor.

## 1. The role of TGF- $\beta$ in cancer physiology

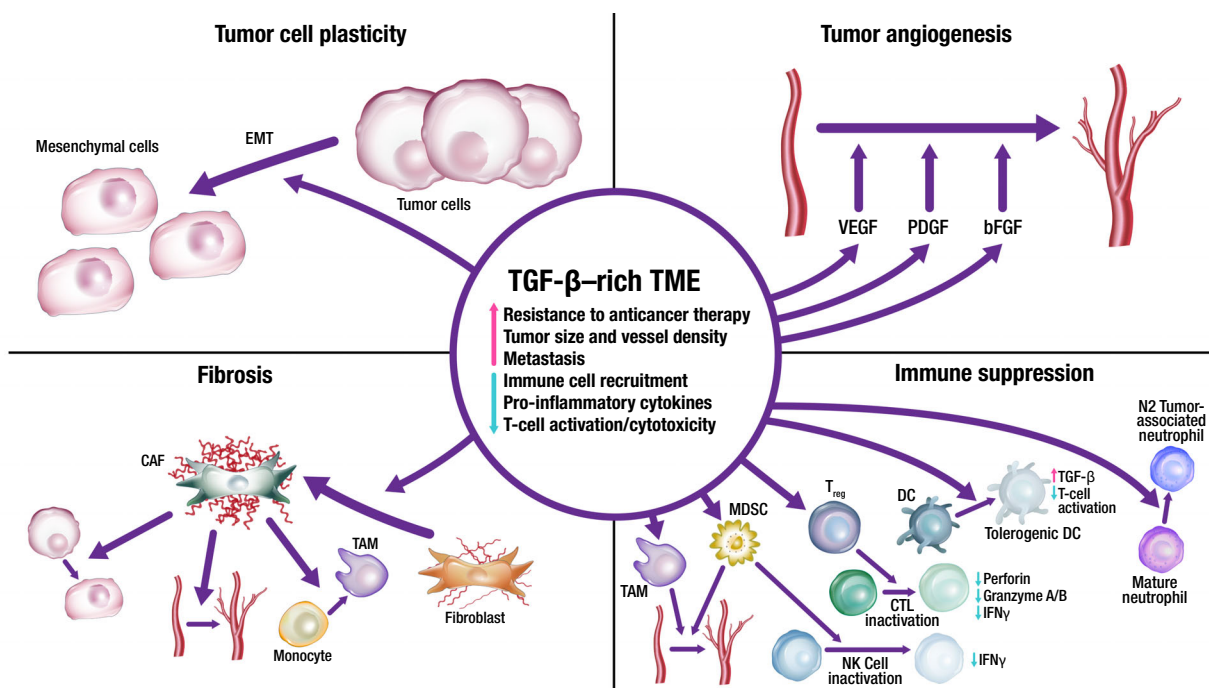
Transforming growth factor- $\beta$  (TGF- $\beta$ ) is a pleiotropically acting cytokine, of which there are three isoforms that are encoded by different genes that are ubiquitously expressed across tissues. These isoforms activate signaling pathways via type I and type II TGF- $\beta$  receptors, and the activity of TGF- $\beta$  is regulated at a variety of steps [1,2]. TGF- $\beta$  is secreted by cells in an inactive form attached to a peptide partner (the latency-associated peptide, LAP). This latent form can undergo isoform-specific activation through the cleavage of the LAP by extracellular proteases to release active TGF- $\beta$ , through integrins (such as  $\alpha\beta6$  or  $\alpha\beta8$ ) binding to the LAP to exert a physical force to release active TGF- $\beta$ , or through modification of the LAP by thrombospondin [3]. The active TGF- $\beta$  then binds to the serine/threonine protein kinase receptors TGF- $\beta$ RI and TGF- $\beta$ RII, sometimes with the aid of the TGF- $\beta$ RIII receptor, betaglycan; the activated receptor complex then phosphorylates specific SMADs, a family of signal-transduction proteins, that form heterotrimeric SMAD complexes. These activated SMAD complexes interact with cell-specific transcription factors in the nucleus [3]. While SMAD2, SMAD3, and SMAD4 participate in TGF- $\beta$  signaling, SMAD6 and SMAD7 inhibit TGF- $\beta$  signaling [3]. The resulting signaling pathway can induce a large and diverse set of cellular responses that are highly context- and tissue-specific [3,4].

Physiologically, TGF- $\beta$  maintains immunological self-tolerance and acts to suppress cancer by regulating epithelial proliferation, apoptosis, and differentiation [3,5]. TGF- $\beta$  signaling undergoes changes during malignant transformation, resulting in TGF- $\beta$  functioning as a tumor promoter rather than a suppressor [4,6]. Aberrant TGF- $\beta$  activation and signaling can promote disease progression by stimulating epithelial–mesenchymal transition (EMT), angiogenesis, cancer-associated fibroblast (CAF) activation, and immunosuppression within the tumor microenvironment (TME) [7–9]. High expression of TGF- $\beta$  in the TME correlates with poor clinical outcome and increased likelihood of metastasis in various tumor types [10,11].

Epithelial–mesenchymal transition is implicated in migration and invasion of cancer cells (Fig. 1) [12]. EMT may increase the number of cancer stem cells [13], and TGF- $\beta$  signaling in the TME can further promote this by enabling epithelial cells to acquire stem cell-like properties [14]. EMT is also associated with resistance to anti-programmed cell death (ligand) 1 (PD-[L]1) therapies, targeted therapies, and chemotherapy [15–17]. Aberrant

TGF- $\beta$  signaling can upregulate the expression of proangiogenic factors such as vascular endothelial growth factor (VEGF), platelet-derived growth factor (PDGF), and basic fibroblast growth factor (bFGF), resulting in increased blood vessel density and tumor size [18,19]. TGF- $\beta$  signaling in the TME is associated with the transition of fibroblasts into CAFs that contribute to tumor drug resistance and metastasis [20,21]. CAFs can remodel the extracellular matrix to influence T-cell migration and trap T cells in the stroma, as well as express a variety of cytokines that are involved in immune suppression and metastasis: interleukin (IL)-6, IL-8, IL-11, CCL2, PGE2, CXCL12, and TGF- $\beta$  [17,20–23].

TGF- $\beta$  plays an important role in immunity, particularly in immunosuppression, as evidenced by the fact that most immune cells respond strongly to its effects [4]. Immunosuppression by TGF- $\beta$  in cancer involves a phenotypic change in a variety of immune cells: dendritic cells, tumor-associated macrophages (TAMS), tumor-associated neutrophils, natural killer (NK) cells, myeloid-derived suppressor cells (MDSCs), regulatory T cells ( $T_{reg}$  cells), and cytotoxic T cells (Fig. 1) [8,9,23,24]. TGF- $\beta$  is an autocrine survival signal for myeloid precursors and drives their differentiation to highly immunosuppressive MDSCs at the expense of macrophages and dendritic cells [25]. In the TGF- $\beta$ -rich TME, dendritic cells shift into a tolerogenic phenotype, with reduced antigen presentation and ability to activate T cells [26]. Macrophages shift from an inflammatory (M1) to a tumor-trophic (M2) phenotype to become TAMs. This phenotype expresses proinflammatory cytokines at a reduced rate, while expression of TGF- $\beta$  and VEGF are increased [27]. Rather than developing an antitumor phenotype, mature neutrophils in the TME preferentially adopt a phenotype that promotes tumor growth, immunosuppression, metastasis, invasion, and angiogenesis [28]. TGF- $\beta$  can suppress the proliferation and cytotoxicity of NK cells and reduce their interferon gamma (IFN- $\gamma$ ) production. IFN- $\gamma$  is an activator of macrophages and stimulates NK cells and neutrophils [3,24]. Undifferentiated T cells can switch to a  $T_{reg}$  phenotype in the presence of TGF- $\beta$ ; this switch can lead to both the inactivation of effector and cytotoxic T cells and an increase in MDSCs, which subsequently differentiate to tumor-associated macrophages or tumor-associated neutrophils [3,24]. Systemic TGF- $\beta$  levels are often increased in people with cancer relative to those in healthy individuals, and elevated TGF- $\beta$  levels are associated with poor prognosis and aggressive cancer [27]. However, the use of TGF- $\beta$  as a biomarker is complicated by the technological challenges associated



**Fig. 1.** TGF- $\beta$ -rich TME promotes survival mechanisms, including angiogenesis, immune suppression, fibrosis, and tumor cell plasticity. Through these mechanisms, TGF- $\beta$  signaling prevents antitumor immune responses, limits drug and immune cell access to the tumor, and promotes resistance to therapy. Through these processes, TGF- $\beta$  also promotes invasion and metastasis. bFGF, basic fibroblast growth factor; CAF, cancer-associated fibroblast; CTL, cytotoxic T lymphocyte; DC, dendritic cell; EMT, epithelial–mesenchymal transition; IFN, interferon; MDSC, myeloid-derived suppressor cell; NK, natural killer; PDGF, platelet-derived growth factor; TAM, tumor-associated macrophage; TGF, transforming growth factor; TME, tumor microenvironment; T<sub>reg</sub>, regulatory T cell; VEGF, vascular endothelial growth factor.

with measuring active TGF- $\beta$  levels in the TME and the predominance of latent TGF- $\beta$  in circulation [29].

## 2. Targeting TGF- $\beta$ for cancer therapy

Inhibition of the TGF- $\beta$  pathway remains an active area of interest in cancer research, and TGF- $\beta$ -targeted neutralizing antibodies, vaccines, antisense oligonucleotides, and small-molecule inhibitors have all been investigated in clinical trials of solid tumors [1,8]. In addition to overcoming immunosuppression, preclinical studies have demonstrated that the blockade of TGF- $\beta$  signaling suppresses fibrosis, EMT, and angiogenesis and inhibits tumor growth [7,8].

The 3 major strategies for targeting TGF- $\beta$  are to block expression and activation of TGF- $\beta$ , block the binding of TGF- $\beta$  to its receptors (including sequestering or ‘trapping’ TGF- $\beta$ ), or inhibit TGF- $\beta$  receptor kinase signaling. Therapies that block TGF- $\beta$  activation and expression include gemogenovatucl-T, a plasmid-based therapy; SRK-181, a TGF- $\beta$ 1 antibody; abituzumab, a pan- $\alpha$ v integrin antibody; PF-06940434, an  $\alpha$ v $\beta$ 8 integrin antagonist; and cotsiranib, a small

interfering RNA therapeutic that inhibits the expression of TGF- $\beta$ 1. Gemogenovatucl-T is a gene therapy consisting of a plasmid of a bifunctional short hairpin RNA that suppresses mature TGF- $\beta$ 1/2 processing and expresses the immune-stimulatory cytokine granulocyte–macrophage colony-stimulating factor [30,31]. In a phase 1 prospective study, patients receiving gemogenovatucl-T ( $n = 15$ ) had a 1-year overall survival (OS) rate of 73% vs 23% in patients not receiving gemogenovatucl-T ( $n = 13$ ) [32]. No grade  $\geq 3$  treatment-related adverse events (TRAEs) were observed in the gemogenovatucl-T-treated patients, and the most common TRAEs included grade 1 injection site induration and injection site erythema reported in 12 and 11 patients, respectively. SRK-181, which inhibits TGF- $\beta$ 1 activation by targeting regions of the latent TGF- $\beta$  complex that mediate cell-associated activation, may provide a means to selectively block activity in certain cells and is currently being studied in patients with solid tumors (NCT04291079) [33]. Abituzumab blocks the activation of TGF- $\beta$  by binding to the  $\alpha$ v integrin subunit. In a phase 1/2 trial in patients with metastatic

colorectal cancer ( $N = 216$ ), abituzumab therapy in combination with the standard of care (SOC) showed acceptable tolerability, but the primary endpoint of progression-free survival was not met. However, OS benefit was observed in patients with tumors showing high-integrin  $\alpha\beta6$  expression in each of the abituzumab dosing arms compared with the SOC; the median OS was not reached (NR) (95% CI, 9.7–NR months) for the abituzumab 1000 mg + SOC group, 15.0 months (95% CI, 10.5–23.2 months) for the abituzumab 500 mg + SOC group, and 10.2 months (95% CI, 5.8–13.1 months) for the SOC group [34]. High-integrin  $\alpha\beta6$  expression correlated with worse survival outcomes in the SOC treatment group but correlated with increased survival benefit upon treatment with either abituzumab 1000 mg + SOC (hazard ratio [HR], 0.41 vs 1.58 in the high-integrin and low-integrin groups, respectively) or abituzumab 500 mg + SOC (HR, 0.55 vs 1.48 in the high-integrin and low-integrin groups, respectively). Treatment-emergent AEs (TEAEs) occurred in 100% of patients in both the lower-dose and the higher-dose abituzumab groups, with the most common TEAEs being diarrhea (65% and 67%, respectively), stomatitis (25% and 30%), and asthenia (21% and 29%). PF-06940434 is currently under investigation for treatment of patients with advanced or metastatic solid tumors, but data indicating efficacy have yet to be published [35]. Cot-siranib, a TGF- $\beta$ 1 and COX-2 small interfering RNA inhibitor, is under investigation in basal cell carcinoma (NCT04669808) and in patients with advanced solid tumors with cholangiocarcinoma, hepatocellular carcinoma, or liver metastases (NCT04676633) [36,37].

Therapies that block TGF- $\beta$  ligand currently in clinical development include neutralizing antibodies (fresolimumab, SAR439459, and NIS793) and a fusion protein that functions as a TGF- $\beta$ 1/3 ‘trap’ (AVID200) [38–41]. The pan-TGF- $\beta$ -neutralizing antibody, fresolimumab, was investigated in patients with advanced melanoma or renal cell carcinoma ( $N = 29$ ); 1 patient experienced a partial response (PR), and six patients experienced stable disease. Gingival bleeding, headache, and epistaxis were the most common TRAEs, with each occurring in 13.8% of patients. Potentially, TGF- $\beta$ -related skin lesions, including actinic keratosis and hyperkeratosis (10.3% each), keratoacanthoma and squamous cell carcinoma of the skin (6.9% each), and basal cell carcinoma (3.4%), were also common [41]. SAR439459 is a pan-TGF- $\beta$  antibody that has demonstrated preclinical activity in human cell lines and murine tumor models, in which treatment inhibited the TGF- $\beta$ -induced suppression of CD8<sup>+</sup> T cells and the development of T<sub>reg</sub> cells [42]. In

a phase 1b study (NCT02947165), no dose-limiting toxicities were reported in patients ( $N = 120$ ) with advanced solid tumors receiving the TGF- $\beta$ 1/2 inhibitor, NIS793 in combination with spartalizumab, and PRs were reported in 4 patients across cohorts. The most common TRAEs were rash ( $n = 15$ ), pruritus ( $n = 10$ ), fatigue ( $n = 9$ ), and nausea ( $n = 8$ ) [43,44]. AVID200 in syngeneic mouse tumor models has demonstrated activity and increased T-cell infiltration into the TME [45], as well as antifibrotic activity in a separate model of idiopathic pulmonary fibrosis [46]. In idiopathic pulmonary fibrosis, the accumulation of activated, heterogenous myofibroblasts, analogous to the conversion of fibroblasts to CAFs in cancer, is mediated by TGF- $\beta$  signaling [47]. In the phase 1 AVID200-03 dose-escalation study (NCT03834662), proinflammatory serum marker levels were increased in a dose-dependent manner in patients ( $N = 19$ ) receiving AVID200; tumor biopsies showed modulation of TGF- $\beta$  signaling and immune activation [48]. Grade 3 TRAEs were reported in 2 patients (diarrhea, lipase elevation, and anemia).

Another class is the oral small-molecule inhibitors of TGF- $\beta$ R kinases, including LY3200882, vactosertib, LY2109761, and galunisertib, that prevent SMAD-mediated TGF- $\beta$  signaling [49–52]. The TGF- $\beta$ R1 inhibitor, LY3200882, is currently being investigated in patients with solid tumors (NCT02937272) [49]. Vactosertib, a small-molecule kinase inhibitor of TGF- $\beta$ R1, is being investigated in combination with pembrolizumab in colorectal cancer or gastric/gastroesophageal junction cancer (NCT03724851) [53]; vactosertib is also being investigated in combination with durvalumab in the second-line treatment of non-small-cell lung cancer (NSCLC; NCT03732274) [54]. In a phase 1 dose-escalation study, 35.3% of patients receiving vactosertib at  $\geq 140$  mg ( $n = 17$ ) achieved stable disease. The most common TRAE was fatigue [52]. In a preclinical study, the TGF- $\beta$ R1 inhibitor, LY2109761, depleted high CD44 and Id1 glioma-initiating cells (both indicators of poor prognosis) in human glioblastoma specimens [50]. In a translational study, the TGF- $\beta$ R1 inhibitor galunisertib was used as a monotherapy to enhance antitumor T-cell immunity and antigen spreading in a mouse model of breast cancer [51]. Clinically relevant doses of galunisertib were used to enhance the antitumor activity of anti-PD-L1 therapy (antimurine PD-L1 clone), resulting in tumor regression and enhanced T-cell activation in a murine colorectal cancer model [51].

TGF- $\beta$  signaling has been implicated in the development and function of the heart, which may present a challenge for systemic inhibition of TGF- $\beta$  as an anti-cancer therapy [55]. Toxicity concerns have been raised



for inhibitors of the TGF- $\beta$ RI kinase ALK5, based on preclinical studies that showed increased incidence of heart valve lesions in animals receiving the TGF- $\beta$ RI kinase inhibitors AZ12601011 and AZ12799734 [56]. Galunisertib, which belongs to this class, was selected for clinical development because incidence of heart lesions appeared only at very high doses or with continuous treatment for 6 months. Clinical research involving > 300 patients has shown that the animal model toxicities of concern for galunisertib have not been reported in humans when intermittent dosing is applied [57]. An anti-TGF- $\beta$ RII antibody, LY3022859, was under clinical investigation in patients with advanced solid tumors ( $N = 14$ ), but the trial was discontinued due to the absence of clinical efficacy and incidence of cytokine storm, despite prophylactic administration of antihistamines and corticosteroids [58].

### 3. The role of the PD-L1 pathway in cancer

The PD-1 receptor and its ligand, PD-L1, are a critical barrier to antitumor immunity. The PD-L1 pathway mediates tumor immune evasion by suppressing cell killing by cytotoxic T cells and NK cells that express PD-1 via expression of PD-L1 by tumor cells, T<sub>reg</sub> cells, MDSCs, and macrophages in the TME, resulting in loss of tumor immunosurveillance [59,60]. Inhibition of the PD-L1 pathway, by blocking of either the receptor or the ligand, has the potential to disinhibit cytotoxic T cells in the TME, resulting in long-lasting antitumor activity in subsets of patients across tumor types [59–62]. However, relieving T cells from inhibition through anti-PD-(L)1 therapy initiates a negative feedback loop, stimulating PD-L1 production by MDSC and subsequent T-cell reinhibition [60,62].

Anti-PD-(L)1 therapy has changed the treatment landscape for a variety of solid tumor types, including NSCLC, melanoma, squamous cell carcinoma of the head and neck (SCCHN), renal cell carcinoma (RCC), and urothelial carcinoma (UC), due to higher response rates and more manageable toxicity profiles than chemotherapy. Prior to the use of anti-PD-(L)1 therapy, second-line chemotherapy provided response rates of < 10% in NSCLC [63]. In the phase 1 KEYNOTE-001 study of the PD-1 inhibitor pembrolizumab in patients with advanced NSCLC ( $N = 495$ ), the objective response rate (ORR) was 19.4%, with a median duration of response of 12.5 months. TRAEs were reported in 70.9% of patients (most commonly fatigue [19.4%], pruritus [10.7%], and decreased appetite [10.5%]). This led to the National Comprehensive Cancer Network recommending pembrolizumab as a

second-line treatment for PD-L1-positive NSCLC [64,65]. Chemotherapy (dacarbazine) was the SOC for metastatic melanoma for 3 decades after its US Food and Drug Administration approval. In the phase 3 CheckMate 066 study in patients with advanced melanoma ( $N = 418$ ), the PD-1 inhibitor nivolumab had a median OS of 37.5 months in the nivolumab group vs 11.2 months in the dacarbazine group and an ORR of 40.0% (95% CI, 33.3%–47.0%) vs 13.9% (95% CI, 9.5%–19.4%) with dacarbazine (odds ratio, 4.06), with 66.7% of nivolumab responders experiencing an ongoing response after 38.4 months [66,67]. TRAEs were reported in 77.7% and 77.6% in the nivolumab and dacarbazine cohorts, respectively; the most common TRAEs were pruritus (23.8%), diarrhea (18.9%), and rash (18.4%) in the nivolumab cohort. Second-line chemotherapy provided response rates of 3–13% in patients with recurrent/metastatic SCCHN, but promising results from immune checkpoint inhibitors have led to the approval of pembrolizumab and nivolumab in this setting [68]. In the phase 1b KEYNOTE-012 study cohort of pembrolizumab in patients with second-line recurrent/metastatic SCCHN ( $N = 192$ ), the ORR was 18%, and the median duration of response was NR (range, 2+ to 30+ months) [68,69]. TRAEs occurred in 64% of patients, with the most common TRAEs being fatigue (22%), hypothyroidism (10%), rash (9%), pruritus, and appetite decrease (8% each).

A phase 2 study of nivolumab in patients with metastatic RCC ( $N = 168$ ) showed an ORR of > 20% across all doses, with a large proportion of responders (40%) experiencing an ongoing response at 24 months [70]. Most patients (73%) experienced a TRAE, the most common of which were fatigue (22–35% of patients across dose groups), nausea (10–13% across dose groups), and pruritus (9–11% across dose groups). In a head-to-head phase 3 study, the median OS was 25.0 months (95% CI, 21.8–NR months) for nivolumab vs 19.6 months (95% CI, 17.6–23.1 months) for the mechanistic target of rapamycin inhibitor, everolimus. The ORR was 25% vs 5% (odds ratio, 5.98) [71]. Nivolumab is now recommended by the National Comprehensive Cancer Network for second-line treatment of RCC [72]. TRAEs occurred in 79% of patients receiving nivolumab, with the most common TRAEs being fatigue (33%), nausea, and pruritus (14% each). Prior to the use of anti-PD-(L)1 therapies in UC, the prognosis of patients receiving second-line chemotherapy was very poor. Pembrolizumab previously showed survival benefit vs chemotherapy in patients with advanced UC in a phase 3 study, with a median OS of 10.3 months (95% CI, 8.0–11.8 months) vs 7.4 months (95% CI, 6.1–8.3 months). TRAEs occurred in 60.9% of patients

receiving pembrolizumab; the most common TRAEs were pruritus (19.5%), fatigue (13.9%), and nausea (10.9%) [73]. Although the first-line SOC for patients with locally advanced or metastatic UC is platinum-based chemotherapy, it provides limited long-term benefits because the median progression-free survival is approximately 6–8 months and OS is approximately 8–15 months, likely due to development of chemoresistance [74–76]. In the phase 3 JAVELIN Bladder 100 trial, avelumab first-line maintenance significantly prolonged OS vs best supportive care alone (21.4 months [95% CI, 18.9–26.1 months] vs 14.3 months [95% CI, 12.9–17.9 months]; HR, 0.69) in patients with UC that had not progressed on first-line chemotherapy. [77] TRAEs were reported in 98.0% of patients receiving avelumab, the most common of which were fatigue (17.7%), pruritus, and urinary tract infection (17.2% each).

#### 4. Rationale for the dual inhibition of TGF- $\beta$ and PD-L1

Despite improvements in treatment outcomes across a variety of tumor types, as of 2019, the median ORR for PD-(L)1 monotherapy in solid tumors is approximately 20%, indicating that a significant unmet need remains [78]. Although durable antitumor responses can be achieved with approved PD-(L)1 inhibitors, some patients never respond to anti-PD-(L)1 therapy (primary refractory), while others develop resistance while receiving anti-PD-(L)1 therapy (acquired resistance) [79].

There are three main phenotypes associated with PD-(L)1 resistance: a TME lacking lymphocytes ('immune desert'), a TME in which lymphocytes are physically excluded from tumor cells ('immune-excluded'), and a TME in which lymphocytes infiltrate the tumor tissue ('inflamed') but are inactivated through a negative feedback loop of PD-L1 signaling, resulting in T-cell 'exhaustion' [80,81].

TGF- $\beta$  and PD-L1 are nonredundant pathways driving immunosuppression in the TME [9,60]. TGF- $\beta$  can promote PD-(L)1 resistance by converting conventional T cells to immunosuppressive T<sub>reg</sub> cells and increasing the survival of myeloid progenitors that differentiate to potent MDSCs [25,82]. Both of these processes result in increased expression of TGF- $\beta$ , while MDSCs express PD-L1 and drive T<sub>reg</sub> cell differentiation [25,82]. In a preclinical study, inhibition of TGF- $\beta$  reduced the number of T<sub>reg</sub> cells, increased the number of effector T cells, and restored sensitivity to anti-PD-L1 therapy [83]. In the context of an 'immune-excluded' phenotype, TGF- $\beta$  promoted activation of CAFs, which serve as a barrier to T-cell infiltration of the tumor parenchyma, that has been shown

to limit the efficacy of anti-PD-L1 therapy in bladder cancer [17]. Lastly, T-cell 'exhaustion' is a phenomenon in which tumors exhibit robust immune infiltration within the TME (as in the 'inflamed' phenotype) but are ineffective in controlling tumor growth. PD-L1 binding of the receptor PD-1 on immune cells can promote a negative feedback loop whereby T cells express other checkpoint molecules such as TIGIT, LAG-3, and TIM3 to limit cytotoxic activity [80].

Given the importance of the TGF- $\beta$  and PD-L1 pathways in the development of cancer, the simultaneous inhibition of these pathways may potentially enhance the antitumor activity observed when each pathway is targeted alone (Fig. 2). A recent analysis of plasma levels of soluble TGF- $\beta$  and PD-L1 in 90 patients treated with first-line chemotherapy found that there was a positive correlation between TGF- $\beta$  and PD-L1 at baseline and following treatment and that an increase in soluble TGF- $\beta$  levels following chemotherapy was associated with worse prognosis [84]. In addition, in a biomarker analysis of pretreatment tumor samples from the phase 2 IMvigor210 trial, high expression of TGF- $\beta$  was associated with lack of response to PD-L1 blockade with atezolizumab [17]. Inhibition of TGF- $\beta$  may thus remove a barrier

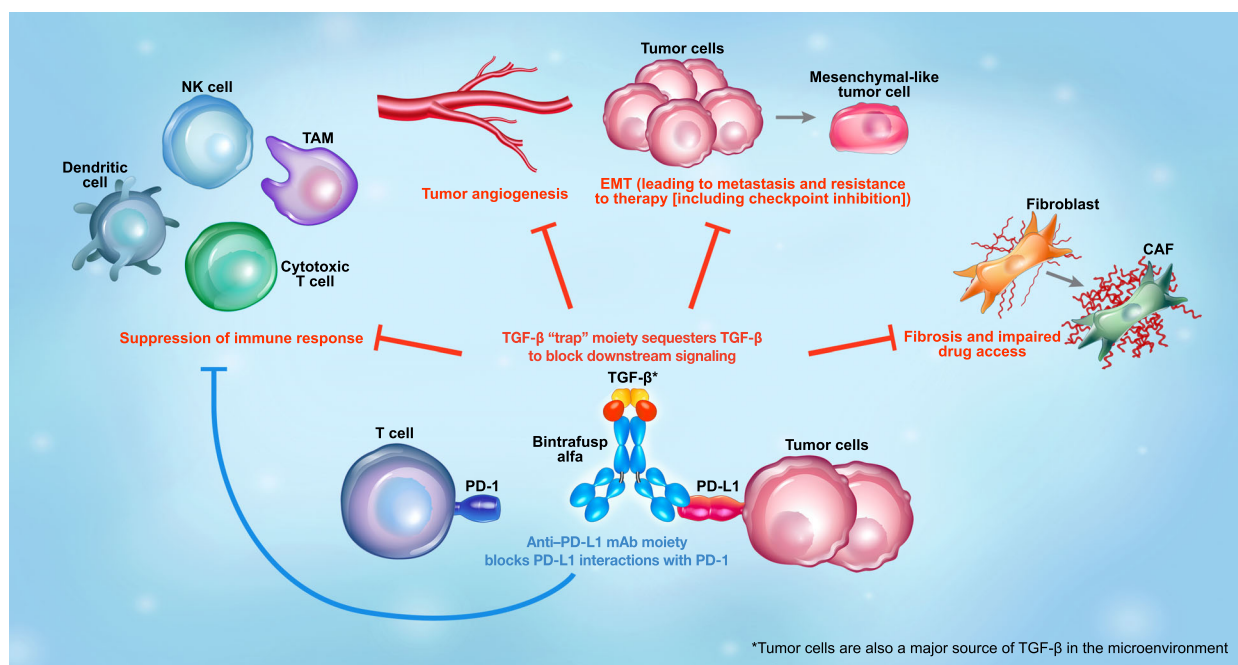


**Fig. 2.** TGF- $\beta$  and PD-L1 signaling pathways are implicated in overlapping but nonredundant tumor survival mechanisms, such that simultaneous inhibition may enhance antitumor activity over inhibition of either pathway alone. PD-1, programmed death 1; PD-L1, programmed death ligand 1; TGF, transforming growth factor.

in solid tumors to immune checkpoint inhibitor-based therapy [85]. Furthermore, in PD-L1-positive tumors, the TGF- $\beta$  is concentrated in the TME; hence, a single molecule targeting PD-L1 and TGF- $\beta$  may ensure suppression of TGF- $\beta$  signaling in the TME compared with independent dual combination therapies. A pre-clinical study evaluated the anticancer efficacy of 2 bifunctional molecules: 1 targeting TGF- $\beta$  and PD-L1 and 1 targeting TGF- $\beta$  and CTLA-4. Both bifunctional molecules were superior to their parent immune checkpoint inhibitors (atezolizumab and ipilimumab, respectively) used alone or in combination with the TGF- $\beta$ R2 domain in causing tumor regression in murine models [86]. An additional bispecific antibody for TGF- $\beta$  and PD-L1, YM101 was recently described in a preclinical study. YM101 demonstrated the ability to bind all 3 isoforms of TGF- $\beta$ , and its antitumor activity was better than the combination of anti-TGF- $\beta$  and anti-PD-L1 treatments in mouse tumor models [87].

Preclinical studies of bintrafusp alfa, a first-in-class bifunctional fusion protein composed of the extracellular domain of the TGF- $\beta$ R2 receptor to function as a TGF- $\beta$  'trap' fused to a human immunoglobulin G1

monoclonal antibody blocking PD-L1 (Fig. 3), also demonstrated that simultaneous inhibition of both pathways using a bifunctional approach resulted in superior antitumor activity compared with either the TGF- $\beta$  'trap' or anti-PD-L1 antibody [88]. In the absence of a specific anti-PD-L1 moiety, the TGF- $\beta$  trap reduced the plasma levels of TGF- $\beta$ 1 but did not decrease the TGF- $\beta$ -dependent signaling in the TME [89], indicating the importance of the bifunctional nature of bintrafusp alfa to ensure that suppression of TGF- $\beta$  occurs only in the TME. In preclinical studies, bintrafusp alfa sequestered all 3 isoforms of TGF- $\beta$  in the TME and bound efficiently and specifically to PD-L1 (both *in vitro* and *in vivo*). This resulted in superior tumor regression compared with a TGF- $\beta$  'trap', an anti-PD-L1 antibody, or the combination of both [88]. The fact that the isolated TGF- $\beta$ R2 ectodomain shows high binding affinity toward TGF- $\beta$ 1 and TGF- $\beta$ 3 but not TGF- $\beta$ 2, and yet bintrafusp alfa neutralizes all three circulating isoforms in both mice and humans [88,90], suggests an avidity effect. This is because both of the TGF- $\beta$ R2 ectodomain moieties, configured in an obligatory dimeric structure in bintrafusp alfa, can



**Fig. 3.** Mechanism of action of bintrafusp alfa, a first-in-class bifunctional fusion protein composed of the extracellular domain of TGF- $\beta$ R2 to function as a TGF- $\beta$  'trap' fused to a human IgG1 antibody blocking PD-L1. Through colocalized, simultaneous inhibition of these pathways, bintrafusp alfa has the potential to enhance immune cell access to the tumor, limit metastasis, and improve response to anticancer therapy. Bintrafusp alfa has the potential to inhibit angiogenesis through suppression of TGF- $\beta$  activity via stromal modulation and may restore normal vascular homeostasis, thereby enhancing drug delivery and T-cell infiltration into the TME. CAF, cancer-associated fibroblast; EMT, epithelial-mesenchymal transition; NK, natural killer; PD-1, programmed death 1; PD-L1, programmed death ligand 1; TAM, tumor-associated macrophage; TGF, transforming growth factor; TME, tumor microenvironment.

simultaneously bind to each protomer of the TGF- $\beta$  homodimer, providing avidity. A radiolabeling study of bintrafusp alfa showed that while the spleen and lung can attract PD-L1-targeting antibodies, thereby limiting biodistribution, bintrafusp alfa localizes to the TME *in vivo* [91]. Preclinical data have shown reduced cancer fibrosis with bintrafusp alfa, which can result in (a) enhanced immune cell access to the tumor, (b) restored drug access to the tumor, and (c) reduced metastatic potential of the tumor [88,89,92]. Bintrafusp alfa has the potential to inhibit angiogenesis through suppression of TGF- $\beta$  activity via stromal modulation and may restore normal vascular homeostasis, thereby enhancing drug delivery and T-cell infiltration into the TME [93–95]. Likewise, bintrafusp alfa may reduce the expression of VEGF and subsequent angiogenesis by sequestering TGF- $\beta$  [83].

Given the effect of radiation therapy to increase TGF- $\beta$  activation and immunogenicity by antigen release, bintrafusp alfa may be a suitable combination partner for radiation therapy by counteracting TGF- $\beta$  signaling, increasing infiltration of CD8<sup>+</sup> T cells, and enhancing the abscopal effect [88,96–98]. In addition, bintrafusp alfa may reduce radiation-induced fibrosis, which has been linked to treatment resistance [88,99]. Similarly, preclinical data support synergistic effects with the combination of bintrafusp alfa and chemotherapy because TGF- $\beta$  inhibition may normalize the extracellular matrix and improve drug delivery and resistance through effects on fibrosis, EMT, and angiogenesis and elimination of chemotherapy-resistant cancer stem-like cells [88,100]. Simultaneous targeting of 2 nonredundant immunosuppressive pathways may result in superior antitumor activity.

## 5. Treatment strategies for the dual inhibition of TGF- $\beta$ and PD-L1

### 5.1. Approaches combining anti-TGF- $\beta$ and anti-PD-(L)1 agents

Many TGF- $\beta$ -targeting therapies are under clinical investigation in combination with anti-PD-(L)1 therapies, especially in tumor types that have had poor responses to anti-PD-(L)1 monotherapies. For advanced gynecological cancers, gemogenovatucl-T is under investigation alone or in combination with atezolizumab (NCT03073525) and in combination with durvalumab (NCT02725489) [30,101]. Galunisertib in combination with durvalumab was studied in patients with metastatic pancreatic cancer (NCT02734160) [102]. An initial analysis reported 1 PR among 42 evaluable patients [103].

Seven grade  $\geq 3$  TRAEs occurred; increased aspartate aminotransferase and  $\gamma$ -glutamyltransferase were the most common events. Galunisertib in combination with nivolumab is being investigated in patients with advanced refractory solid tumors, NSCLC, and hepatocellular carcinoma (NCT02423343) [104]. In the hepatocellular carcinoma cohort, two PRs were reported among 47 patients [105]. The most common TEAEs were fatigue (33.6%), anemia (25.5%), peripheral edema (22.8%), and abdominal pain (21.5%); grade 3/4 TRAEs were much less frequent, with neutropenia (2.7%), fatigue, anemia, increased bilirubin, hypoalbuminemia, and embolism (1.3% each) being the most common events. LY3200882, either alone or in combination with chemotherapy, radiation, or anti-PD-L1 therapy (NCT02937272), is currently under investigation in a phase 1 study of patients with solid tumors [49]; 1 PR was reported among 30 patients [106]. No grade  $\geq 3$  TRAEs were reported; the most common TRAEs were thrombocytopenia, acneiform dermatitis, rash, and constipation (two patients each). SAR439459 is currently under investigation in a phase 1b study (NCT03192345), either alone or in combination with cemiplimab, an anti-PD-1 agent, for treatment of patients with advanced solid tumors [38]. NIS793 is under investigation in a phase 1 study (NCT02947165), either alone or in combination with spartalizumab, an anti-PD-L1 agent, for treatment of patients with advanced solid tumors [43]. In a phase 1 study (NCT04152018), PF-06940434 is currently under investigation as a monotherapy and as a combination partner with an anti-PD-L1 therapy (PF-06801591) for treatment of patients with advanced or metastatic solid tumors [35]. Together, these results provide evidence that dual inhibition of TGF- $\beta$  and PD-(L)1 may provide a more manageable safety profile in line with PD-(L)1 monotherapy than that observed for TGF- $\beta$  monotherapy. However, the limited efficacy observed with these combinations suggests that further improvements may be possible through dual-targeting agents that localize TGF- $\beta$  inhibition within the TME. Additionally, no biomarkers of response to TGF- $\beta$  inhibition have been identified to date. Based on preclinical studies that identified distinct cellular and molecular profiles of responders vs nonresponders to dual inhibition of TGF- $\beta$  and PD-L1 [107,108], further investigation is warranted into immune phenotype and TGF- $\beta$ -related gene expression signatures, as well as genomic biomarkers.

### 5.2. Dual-targeting agents

To date, there are 2 single-molecule TGF- $\beta$ /PD-L1 inhibitors in clinical development: bintrafusp alfa and



**Table 1.** Overview of therapies currently under investigation targeting TGF- $\beta$  and PD-L1. CTLA-4, cytotoxic T-lymphocyte-associated protein 4; EGFR, epidermal growth factor receptor; GARP, glycoprotein A repetitions predominant; GM-CSF, granulocyte-macrophage colony-stimulating factor; HCC, hepatocellular carcinoma; HMGA2, high mobility group A2; mAb, monoclonal antibody; NSCLC, non-small-cell lung cancer; PARPi, poly ADP-ribose polymerase inhibition therapy; PD-1, programmed death 1; PD-L1, programmed death ligand 1; siRNA, small interfering RNA; TGF- $\beta$ , transforming growth factor- $\beta$ ; TGF- $\beta$ R, transforming growth factor- $\beta$  receptor; VEGF, vascular endothelial growth factor.

TGF- $\beta$ inhibitor	Combination partner(s)	Mechanism of action	Clinical trial ID	Phase	Patient population	Primary completion date
Bintrafusp alfa	None	Bifunctional TGF- $\beta$ 'trap'/ anti-PD-L1 mAb	NCT03631706 [130]	3	Advanced NSCLC with high PD-L1 tumor expression	Trial discontinued January 19, 2021 [131]
Bintrafusp alfa	Chemotherapy	Bifunctional TGF- $\beta$ 'trap'/ anti-PD-L1 mAb	NCT04066491 [114]	2	Locally advanced/metastatic biliary tract cancer	Trial discontinued Aug 23, 2021 [132]
Bintrafusp alfa	None	Bifunctional TGF- $\beta$ 'trap'/ anti-PD-L1 mAb	NCT03833661 [133]	2	Platinum-experienced, locally advanced/metastatic biliary tract cancer	November 2020
Bintrafusp alfa	None	Bifunctional TGF- $\beta$ 'trap'/ anti-PD-L1 mAb	NCT04489940 [134]	2	HMGA2-expressing triple negative breast cancer	February 2023
Bintrafusp alfa	None	Bifunctional TGF- $\beta$ 'trap'/ anti-PD-L1 mAb	NCT04246489 [135]	2	Advanced unresectable or metastatic cervical cancer	April 2022
Bintrafusp alfa	Concurrent chemoradiation	Bifunctional TGF- $\beta$ 'trap'/ anti-PD-L1 mAb	NCT03840902 [116]	2	Unresectable stage III NSCLC	May 2023
Bintrafusp alfa	Chemotherapy	Bifunctional TGF- $\beta$ 'trap'/ anti-PD-L1 mAb	NCT03840915 [115]	1b/2	Stage IV NSCLC	January 2022
Bintrafusp alfa	None	Bifunctional TGF- $\beta$ 'trap'/ anti-PD-L1 mAb	NCT02517398 [117]	1	Advanced solid tumors	September 2022
Bintrafusp alfa	None	Bifunctional TGF- $\beta$ 'trap'/ anti-PD-L1 mAb	NCT02699515 [118]	1	Advanced solid tumors	September 2022
Bintrafusp alfa	Chemotherapy and radiation or bevacizumab (anti-VEGF)	Bifunctional TGF- $\beta$ 'trap'/ anti-PD-L1 mAb	NCT04551950 [136]	1	Locally advanced or advanced cervical cancer	May 2022
Bintrafusp alfa	None	Bifunctional TGF- $\beta$ 'trap'/ anti-PD-L1 mAb	NCT04349280 [137]	1b	Platinum-experienced metastatic or locally advanced/unresectable urothelial cancer	September 2022
Galunisertib	Nivolumab (anti-PD-1)	TGF- $\beta$ R1 inhibitor	NCT02423343 [104]	1b/2	Advanced refractory solid tumors, recurrent/refractory NSCLC, HCC	December 2018
Galunisertib	Durvalumab (anti-PD-L1)	TGF- $\beta$ R1 inhibitor	NCT02734160 [102]	1b	Metastatic pancreatic cancer	August 2018
LY3200882	Chemotherapy, radiation, and/or LY3300054 (anti-PD-L1)	TGF- $\beta$ R1 inhibitor	NCT02937272 [49]	1	Solid tumors	February 2020

**Table 1.** (Continued).

TGF- $\beta$ inhibitor	Combination partner(s)	Mechanism of action	Clinical trial ID	Phase	Patient population	Primary completion date
NIS793	Spartalizumab (anti-PD-1)	Anti-TGF- $\beta$ mAb	NCT02947165 [43]	1	Advanced malignancies	June 2021
NIS793	Chemotherapy +/- spartalizumab	Anti-TGF- $\beta$ mAb	NCT04390763 [40]	2	Metastatic pancreatic ductal adenocarcinoma	January 2023
PF-06940434	PF-06801591 (anti-PD-1)	$\alpha$ -v/ $\beta$ -8 integrin inhibitor	NCT04152018 [35]	1	Advanced/metastatic solid tumors	January 2024
SAR439459	Cemiplimab (anti-PD-1)	Pan-TGF- $\beta$ inhibitor	NCT03192345 [38]	1b	Advanced solid tumors	April 2023
SHR-1701	None	TGF- $\beta$ -RII/PD-L1	NCT03710265 [109]	1	Locally advanced/metastatic solid tumors	November 2019
SHR-1701	None	TGF- $\beta$ -RII/PD-L1	NCT04324814 [113]	1	Advanced solid tumors	May 2022
SHR-1701	Radiotherapy	TGF- $\beta$ -RII/PD-L1	NCT04560244 [112]	2	Metastatic NSCLC	September 2022
SHR-1701	None	TGF- $\beta$ -RII/PD-L1	NCT03774979 [111]	1	Advanced solid tumors	July 2021
SHR-1701	None	TGF- $\beta$ -RII/PD-L1	NCT04282070 [110]	1b	Recurrent/metastatic nasopharyngeal carcinoma	April 2022
Gemogenovatumel-T	Durvalumab (anti-PD-L1)	TGF- $\beta$ 1/2 inhibitor, GM-CSF expresser	NCT02725489 [101]	2	Advanced breast and gynecological cancers	December 2019
Gemogenovatumel-T	Atezolizumab (anti-PD-L1)	TGF- $\beta$ 1/2 inhibitor, GM-CSF expresser	NCT03073525 [30]	2	Advanced gynecological cancers	January 2021
Vactosertib	Durvalumab (anti-PD-L1)	TGF- $\beta$ RI inhibitor	NCT03732274 [54]	1b/2	Advanced NSCLC	October 2022
Vactosertib	Pembrolizumab (anti-PD-1)	TGF- $\beta$ RI inhibitor	NCT03724851 [53]	1b/2	Metastatic colorectal or gastric cancer	June 2021
AVID200	None	TGF- $\beta$ 1/3 'trap'	NCT03834662 [39]	1	Advanced or metastatic solid tumors	February 2020
Cotsiranib	None	TGF- $\beta$ 1/COX-2 siRNA inhibitor	NCT04676633 [36]	1	Advanced solid tumors with cholangiocarcinoma, HCC, or liver metastases	March 2024
Cotsiranib	None	TGF- $\beta$ 1/COX-2 siRNA inhibitor	NCT04669808 [37]	2	Basal cell carcinoma	December 2021
SRK-181	Anti-PD-(L)1 antibody therapy	Anti-TGF- $\beta$ mAb	NCT04291079 [138]	1	Advanced or metastatic solid tumors	December 2021

SHR-1701, another TGF- $\beta$ RII/PD-L1 bifunctional fusion protein. SHR-1701 is currently being evaluated in phase 1/2 studies in patients with locally advanced/metastatic solid tumors (Table 1) [109–113]. To our knowledge, bintrafusp alfa is the most developed single-molecule therapy, with multiple phase 2 trials in biliary tract cancer, NSCLC, cervical cancer, and other solid tumors (Table 1) [88–90,98,114–120].

In a phase 1 dose-escalation and dose-expansion study (NCT03710265), no dose-limiting toxicities were observed, and the maximum tolerated dose was not reached for patients ( $N = 49$ ) with advanced solid

tumors receiving SHR-1701; in patients who were evaluable for efficacy ( $n = 45$ ), the ORR was 17.8% (95% CI, 8.0%–32.1%), with 7 of 8 responses ongoing. The most common TRAEs (incidence > 15%) were increased alanine aminotransferase/aspartate aminotransferase, anemia, hypothyroidism, and increased bilirubin/conjugated bilirubin [121]. In an expansion cohort of a phase 1b study (NCT03774979), patients with epidermal growth factor-positive NSCLC ( $N = 27$ ; 24 were evaluable for efficacy) receiving SHR-1701 had an ORR of 16.7% (95% CI, 4.7%–37.4%). Grade 3 TRAEs occurred in 7.4% of patients,

including anemia, hypokalemia, and asthenia (3.7% each) [122].

Results from 2 phase 1 studies (NCT02517398 and NCT02699515) of > 670 patients treated with bintrafusp alfa demonstrated promising clinical activity in various expansion cohorts of advanced solid tumors [90,120,123–129]. Durable responses of > 6 months were reported in multiple advanced solid tumor types, and response rates were compared favorably with historical data for anti-PD-(L)1 therapies in the same tumor type, although no head-to-head studies have been conducted. Additionally, the safety profile appeared manageable and consistent with colocalized, simultaneous inhibition of the TGF- $\beta$  and PD-L1 pathways. The most common TRAE preferred terms were rash maculopapular, pruritus, rash, asthenia, and hypothyroidism. TRAEs leading to discontinuation of bintrafusp alfa occurred at a rate of 6–20%. Skin lesions, including those that have been observed with fresolimumab, were observed at a rate of 3–13.3% across eight expansion cohorts.

Interestingly, the cardiac toxicity observed in animals treated with ALK5 inhibitors (AZ12601011 and AZ12799734) [56] and cytokine release observed with anti-TGF- $\beta$ RII antibody (LY3022859) in patients with advanced solid tumors [58] have not been seen in pre-clinical or clinical trials with bintrafusp alfa. Simultaneous, colocalized inhibition of TGF- $\beta$  and PD-L1 may explain why these TRAEs are not observed in patients treated with bintrafusp alfa, as localization of TGF- $\beta$  inhibition to the TME may prevent AEs associated with systemic inhibition of TGF- $\beta$ .

Finally, while dual-targeting agents have demonstrated significant advantages over combinations of TGF- $\beta$  and PD-L1 inhibitors in the clinical setting [81,82], larger head-to-head clinical trials are necessary to confirm these findings. Based on an increasing number of reports that implicate the actions of other TGF- $\beta$  family ligands (e.g., activins) in malignancies, future development is also warranted for alternative bifunctional molecules with specificity for TGF- $\beta$  family ligands in combination with immune checkpoint inhibitors. Additionally, investigation into sequential inhibition of TGF- $\beta$  and PD-(L)1 (or PD-[L]1 and TGF- $\beta$ ) would help to explain the complex biologic interplay of these two pathways.

## 6. Conclusions

Tumor-promoting activities of TGF- $\beta$  within the TME, which include EMT, fibrosis, angiogenesis, and immunosuppression, are nonredundant with the tumor-evasive mechanisms mediated by PD-L1; hence,

simultaneous inhibition of TGF- $\beta$  and PD-L1 pathways may allow for increased overall efficacy compared with independent blockade of either pathway alone. A single-molecule therapy targeting both pathways has the potential for a localized optimal suppression of TGF- $\beta$  within the TME, a benefit that is not provided by combining independent therapies, as evidenced by the superior preclinical activity of bintrafusp alfa compared with dual inhibition by two molecules. Based on its proposed mechanism of action, the bifunctional nature of bintrafusp alfa and other dual-targeting agents provides colocalized, simultaneous inhibition of the TGF- $\beta$  and PD-L1 pathways within the TME and represents an attractive potential therapy for patients with advanced solid tumors.

## Acknowledgements

The authors thank Debra Weingarten for her assistance in the preparation of this manuscript. This manuscript was funded by the healthcare business of Merck KGaA, Darmstadt, Germany (CrossRef Funder ID: 10.13039/100009945), and was previously part of an alliance between the healthcare business of Merck KGaA, Darmstadt, Germany, and GlaxoSmithKline. Medical writing support was provided by Spencer Hughes of ClinicalThinking, Inc., which was also funded by the healthcare business of Merck KGaA, Darmstadt, Germany, and GlaxoSmithKline in accordance with Good Publication Practice guidelines (<http://www.ismpp.org/gpp3>). This manuscript was funded in part by the Intramural Research Program of the Center for Cancer Research, National Cancer Institute, National Institutes of Health, Bethesda, MD, USA, and by a Cooperative Research and Development Agreement between the National Cancer Institute and EMD Serono, Billerica, MA, USA (CrossRef Funder ID:10.13039/100004755).

## Conflict of interest

JLG reports a collaborative research and development agreement between the National Cancer Institute (NCI) and EMD Serono, Billerica, MA, USA, a patent with the NCI entitled ‘Combination PDL1 and TGF-beta blockade in patients with HPV+ malignancies’, unpaid membership on the Data Safety Monitoring Board for bintrafusp alfa, and an unpaid position of NCI Liaison to the Board of the Society for Immunotherapy of Cancer. J Schlom reports a collaborative research and development agreement between the NCI and EMD Serono, Billerica, MA, USA. MHBH reports grants from Roche-Genentech,

Innovation Pathways, NCI, and Varian Medical Systems; consulting fees from Telos Inc. and Innovation Pathways; honoraria from the Society for Immunotherapy in Cancer; conference chairmanship for American Association for Cancer Research; advisory committee memberships for Genentech and EMD Serono, Billerica, MA, USA; a patent entitled 'DNA Damage Repair Deficit in Cancer Cells'; and receipt of research drugs from Innovation Pathways. FA and YL report employment at EMD Serono, Billerica, MA, USA. ID reports previous employment at EMD Serono, Billerica, MA, USA. XJW, J Seoane, and AM do not have any conflicts of interest to disclose.

### Author contributions

JLG, J Schlom, XJW, AM, MHBH, J Seoane, FA, YL, and ID conceptualized the study. JLG, J Schlom, XJW, AM, MHBH, J Seoane, FA, YL, and ID wrote the original draft. JLG, J Schlom, XJW, AM, MHBH, J Seoane, FA, YL, and ID wrote, reviewed, and edited the manuscript.

### Data accessibility

Any requests for data by qualified scientific and medical researchers for legitimate research purposes will be subject to the Data Sharing Policy of the healthcare business of Merck KGaA, Darmstadt, Germany. All requests should be submitted in writing to the data sharing portal of the healthcare business of Merck KGaA, Darmstadt, Germany (<https://www.merckgroup.com/en/research/our-approach-to-research-and-development/healthcare/clinical-trials/commitment-responsible-data-sharing.html>). When the healthcare business of Merck KGaA, Darmstadt, Germany, has a coresearch, codevelopment, or comarketing or copromotion agreement, or when the product has been out-licensed, the responsibility for disclosure might be dependent on the agreement between parties. Under these circumstances, the healthcare business of Merck KGaA, Darmstadt, Germany, will endeavor to gain agreement to share data in response to requests.

### References

- Ciardiello D, Elez E, Tabernero J, Seoane J. Clinical development of therapies targeting TGF $\beta$ : current knowledge and future perspectives. *Ann Oncol*. 2020;**31**:1336–49. <https://doi.org/10.1016/j.annonc.2020.07.009>
- Heldin CH, Moustakas A. Signaling receptors for TGF- $\beta$  family members. *Cold Spring Harb Perspect Biol*. 2016;**8**:a022053. <https://doi.org/10.1101/cshperspect.a022053>
- Battle E, Massagué J. Transforming growth factor- $\beta$  signaling in immunity and cancer. *Immunity*. 2019;**50**:924–40. <https://doi.org/10.1016/j.immuni.2019.03.024>
- van den Bulk J, de Miranda NFCC, ten Dijke P. Therapeutic targeting of TGF- $\beta$  in cancer: hacking a master switch of immune suppression. *Clin Sci*. 2021;**135**:35–52. <https://doi.org/10.1042/cs20201236>
- Li MO, Flavell RA. Contextual regulation of inflammation: a duet by transforming growth factor-beta and interleukin-10. *Immunity*. 2008;**28**:468–76. <https://doi.org/10.1016/j.immuni.2008.03.003>
- Seoane J, Gomis RR. TGF- $\beta$  family signaling in tumor suppression and cancer progression. *Cold Spring Harb Perspect Biol*. 2017;**9**:a022277. <https://doi.org/10.1101/cshperspect.a022277>
- Akhurst RJ, Hata A. Targeting the TGF $\beta$  signalling pathway in disease. *Nat Rev Drug Discov*. 2012;**11**:790–811. <https://doi.org/10.1038/nrd3810>
- Colak S, Ten Dijke P. Targeting TGF- $\beta$  signaling in cancer. *Trends Cancer*. 2017;**3**:56–71. <https://doi.org/10.1016/j.trecan.2016.11.008>
- Principe DR, Doll JA, Bauer J, Jung B, Munshi HG, Bartholin L, et al. TGF- $\beta$ : duality of function between tumor prevention and carcinogenesis. *J Natl Cancer Inst*. 2014;**106**:djt369. <https://doi.org/10.1093/jnci/djt369>
- Agajanian M, Runa F, Kelber JA. Identification of a PEAK1/ZEB1 signaling axis during TGF $\beta$ /fibronectin-induced EMT in breast cancer. *Biochem Biophys Res Commun*. 2015;**465**:606–12. <https://doi.org/10.1016/j.bbrc.2015.08.071>
- Calon A, Lonardo E, Berenguer-Llergo A, Espinet E, Hernando-Momblona X, Iglesias M, et al. Stromal gene expression defines poor-prognosis subtypes in colorectal cancer. *Nat Genet*. 2015;**47**:320–9. <https://doi.org/10.1038/ng.3225>
- Heldin CH, Vanlandewijck M, Moustakas A. Regulation of EMT by TGF $\beta$  in cancer. *FEBS Lett*. 2012;**586**:1959–70. <https://doi.org/10.1016/j.febslet.2012.02.037>
- Mani SA, Guo W, Liao MJ, Eaton EN, Ayyanan A, Zhou AY, et al. The epithelial-mesenchymal transition generates cells with properties of stem cells. *Cell*. 2008;**133**:704–15. <https://doi.org/10.1016/j.cell.2008.03.027>
- Derynck R, Turley SJ, Akhurst RJ. TGF $\beta$  biology in cancer progression and immunotherapy. *Nat Rev Clin Oncol*. 2020;**18**:9–34. <https://doi.org/10.1038/s41571-020-0403-1>
- Du B, Shim JS. Targeting Epithelial-Mesenchymal Transition (EMT) to overcome drug resistance in cancer. *Molecules*. 2016;**21**:965. <https://doi.org/10.3390/molecules21070965>
- Hugo W, Zaretsky JM, Sun L, Song C, Moreno BH, Hu-Lieskovan S, et al. Genomic and transcriptomic



- features of response to anti-PD-1 therapy in metastatic melanoma. *Cell*. 2016;**165**:35–44. <https://doi.org/10.1016/j.cell.2016.02.065>
- 17 Mariathasan S, Turley SJ, Nickles D, Castiglioni A, Yuen K, Wang Y, et al. TGF $\beta$  attenuates tumour response to PD-L1 blockade by contributing to exclusion of T cells. *Nature*. 2018;**554**:544–8. <https://doi.org/10.1038/nature25501>
  - 18 Ferrari G, Cook BD, Terushkin V, Pintucci G, Mignatti P. Transforming growth factor-beta 1 (TGF-beta 1) induces angiogenesis through vascular endothelial growth factor (VEGF)-mediated apoptosis. *J Cell Physiol*. 2009;**219**:449–58. <https://doi.org/10.1002/jcp.21706>
  - 19 Ucuzian AA, Gassman AA, East AT, Greisler HP. Molecular mediators of angiogenesis. *J Burn Care Res*. 2010;**31**:158–75. <https://doi.org/10.1097/BCR.0b013e3181c7ed82>
  - 20 Ansems M, Span PN. The tumor microenvironment and radiotherapy response; a central role for cancer-associated fibroblasts. *Clin Transl Radiat Oncol*. 2020;**22**:90–7. <https://doi.org/10.1016/j.ctro.2020.04.001>
  - 21 Ghahremanifard P, Chanda A, Bonni S, Bose P. TGF- $\beta$  mediated immune evasion in cancer-spotlight on cancer-associated fibroblasts. *Cancers (Basel)*. 2020;**12**:3650. <https://doi.org/10.3390/cancers12123650>
  - 22 Calon A, Espinet E, Palomo-Ponce S, Tauriello DV, Iglesias M, Céspedes MV, et al. Dependency of colorectal cancer on a TGF- $\beta$ -driven program in stromal cells for metastasis initiation. *Cancer Cell*. 2012;**22**:571–84. <https://doi.org/10.1016/j.ccr.2012.08.013>
  - 23 Liu T, Han C, Wang S, Fang P, Ma Z, Xu L, et al. Cancer-associated fibroblasts: an emerging target of anti-cancer immunotherapy. *J Hematol Oncol*. 2019;**12**:86. <https://doi.org/10.1186/s13045-019-0770-1>
  - 24 Lindau D, Gielen P, Kroesen M, Wesseling P, Adema GJ. The immunosuppressive tumour network: myeloid-derived suppressor cells, regulatory T cells and natural killer T cells. *Immunology*. 2013;**138**:105–15. <https://doi.org/10.1111/imm.12036>
  - 25 Gonzalez-Junca A, Driscoll KE, Pellicciotta I, Du S, Lo CH, Roy R, et al. Autocrine TGF $\beta$  is a survival factor for monocytes and drives immunosuppressive lineage commitment. *Cancer Immunol Res*. 2019;**7**:306–20. <https://doi.org/10.1158/2326-6066.CIR-18-0310>
  - 26 Roncarolo MG, Levings MK, Traversari C. Differentiation of T regulatory cells by immature dendritic cells. *J Exp Med*. 2001;**193**:F5–9. <https://doi.org/10.1084/jem.193.2.f5>
  - 27 Teicher BA. Transforming growth factor-beta and the immune response to malignant disease. *Clin Cancer Res*. 2007;**13**:6247–51. <https://doi.org/10.1158/1078-0432.CCR-07-1654>
  - 28 Fridlender ZG, Sun J, Kim S, Kapoor V, Cheng G, Ling L, et al. Polarization of tumor-associated neutrophil phenotype by TGF-beta: “N1” versus “N2” TAN. *Cancer Cell*. 2009;**16**:183–94. <https://doi.org/10.1016/j.ccr.2009.06.017>
  - 29 Khan SA, Joyce J, Tsuda T. Quantification of active and total transforming growth factor- $\beta$  levels in serum and solid organ tissues by bioassay. *BMC Res Notes*. 2012;**5**:636. <https://doi.org/10.1186/1756-0500-5-636>
  - 30 Trial of atezolizumab and vigal for advanced gynecological cancers (a companion study to CL-PTL-119). [cited 2021 November 01]. Available from: <https://clinicaltrials.gov/ct2/show/NCT03073525>
  - 31 Senzer N, Barve M, Kuhn J, Melnyk A, Beitsch P, Lazar M, et al. Phase I trial of “bi-shRNAi(furin)/GMCSF DNA/autologous tumor cell” vaccine (FANG) in advanced cancer. *Mol Ther*. 2012;**20**:679–86. <https://doi.org/10.1038/mt.2011.269>
  - 32 Ghisoli M, Barve M, Mennel R, Lenarsky C, Horvath S, Wallraven G, et al. Three-year follow up of GMCSF/bi-shRNA(furin) DNA-transfected autologous tumor immunotherapy (Vigil) in metastatic advanced Ewing’s sarcoma. *Mol Ther*. 2016;**24**:1478–83. <https://doi.org/10.1038/mt.2016.86>
  - 33 Martin CJ, Datta A, Littlefield C, Kalra A, Chapron C, Wawersik S, et al. Selective inhibition of TGF $\beta$ 1 activation overcomes primary resistance to checkpoint blockade therapy by altering tumor immune landscape. *Sci Transl Med*. 2020;**12**:eaay8456. <https://doi.org/10.1126/scitranslmed.aay8456>
  - 34 Élez E, Kocáková I, Höhler T, Martens UM, Bokemeyer C, Van Cutsem E, et al. Abituzumab combined with cetuximab plus irinotecan versus cetuximab plus irinotecan alone for patients with KRAS wild-type metastatic colorectal cancer: the randomised phase I/II POSEIDON trial. *Ann Oncol*. 2015;**26**:132–40. <https://doi.org/10.1093/annonc/mdu474>
  - 35 Study of PF-06940434 in patients with advanced or metastatic solid tumors. [cited 2021 November 01]. Available from: <https://clinicaltrials.gov/ct2/show/NCT04152018>
  - 36 Safety, tolerability, PK, anti-tumor activity of STP705 injected IT in cholangiocarcinoma, hepatocellular carcinoma or liver metastases in subjects with advanced/metastatic or surgically unresectable solid tumors who are refractory to standard therapy. [cited 2021 November 01]. Available from: <https://clinicaltrials.gov/ct2/show/NCT04676633>
  - 37 Open label, dose escalation study for the safety and efficacy of STP705 in adult patients with basal cell carcinoma. [cited 2021 November 01]. Available from: <https://clinicaltrials.gov/ct2/show/NCT04669808>
  - 38 A first-in-human study of the safety, pharmacokinetics, pharmacodynamics and anti-tumor activity of SAR439459 monotherapy and combination of SAR439459 and cemiplimab in patients with advanced

- solid tumors. [cited 2021 November 01]. Available from: <https://clinicaltrials.gov/ct2/show/NCT03192345>
- 39 A trial of AVID200, a Transforming Growth Factor  $\beta$  (TGF $\beta$ ) inhibitor, in patients malignancies. [cited 2021 November 01]. Available from: <https://clinicaltrials.gov/ct2/show/NCT03834662>
- 40 Study of efficacy and safety of NIS793 (with and without spartalizumab) in combination with SOC chemotherapy in first-line metastatic Pancreatic Ductal Adenocarcinoma (mPDAC). [cited 2021 November 01]. Available from: <https://clinicaltrials.gov/ct2/show/NCT04390763>
- 41 Morris JC, Tan AR, Olencki TE, Shapiro GI, Dezube BJ, Reiss M, et al. Phase I study of GC1008 (fresolimumab): a human anti-transforming growth factor-beta (TGFbeta) monoclonal antibody in patients with advanced malignant melanoma or renal cell carcinoma. *PLoS One*. 2014;**9**:e90353.
- 42 Gregory RC, Greco R, Qu H, Malkova N, Levit M, Perron K, et al. The anti-TGF $\beta$  neutralizing antibody, SAR439459, blocks the immunosuppressive effects of TGF $\beta$  and inhibits the growth of syngeneic tumors in combination with anti-PD1. *Cancer Res*. 2018;**78**:2790. Abstract 2790. <https://doi.org/10.1158/1538-7445.Am2018-2790>
- 43 Phase I/Ib study of NIS793 in combination with PDR001 in patients with advanced malignancies. [cited 2021 November 01]. Available from: <https://clinicaltrials.gov/ct2/show/NCT02947165>
- 44 Bauer TM, Lin C-C, Greil R, Goebeler M-E, Huetter-Kroenke ML, Garrido-Laguna I, et al. Phase Ib study of the anti-TGF- $\beta$  monoclonal antibody (mAb) NIS793 combined with spartalizumab (PDR001), a PD-1 inhibitor, in patients (pts) with advanced solid tumors. *J Clin Oncol*. 2021;**39**:2509.
- 45 Tremblay G, Gruosso T, Denis J-F, Figueredo R, Koropatnick J, Connor-McCourt M. AVID200, a first-in-class selective TGF-beta 1 and -beta 3 inhibitor, sensitizes tumors to immune checkpoint blockade therapies. *Cancer Res*. 2020;**80**:6710. Abstract 6710. <https://doi.org/10.1158/1538-7445.AM2020-6710>
- 46 Anti-fibrotic effects of AVID200 in preclinical models of idiopathic pulmonary fibrosis (IPF) featured in a poster presentation at the second annual IPF summit. 2018. Available from: <https://forbius.com/press-releases/anti-fibrotic-effects-of-avid200-in-preclinical-models-of-idiopathic-pulmonary-fibrosis-ipf-featured-in-a-poster-presentation-at-the-second-annual-ipf-summit>
- 47 Ballester B, Milara J, Cortijo J. Idiopathic pulmonary fibrosis and lung cancer: mechanisms and molecular targets. *Int J Mol Sci*. 2019;**20**:593. <https://doi.org/10.3390/ijms20030593>
- 48 Yap TA, Lakhani NJ, Araujo DV, Ahnert JR, Chandana SR, Sharma M, et al. AVID200, first-in-class TGF-beta 1 and 3 selective and potent inhibitor: safety and biomarker results of a phase I monotherapy dose-escalation study in patients with advanced solid tumors. *J Clin Oncol*. 2020;**38**:3587. [https://doi.org/10.1200/JCO.2020.38.15\\_suppl.3587](https://doi.org/10.1200/JCO.2020.38.15_suppl.3587)
- 49 A study of LY3200882 in participants with solid tumors. [cited 2021 November 01]. Available from: <https://clinicaltrials.gov/ct2/show/NCT02937272>
- 50 Anido J, Sáez-Borderías A, González-Juncà A, Rodón L, Folch G, Carmona MA, et al. TGF- $\beta$  receptor inhibitors target the CD44(high)/Id1(high) glioma-initiating cell population in human glioblastoma. *Cancer Cell*. 2010;**18**:655–68. <https://doi.org/10.1016/j.ccr.2010.10.023>
- 51 Holmgaard RB, Schaer DA, Li Y, Castaneda SP, Murphy MY, Xu X, et al. Targeting the TGF $\beta$  pathway with galunisertib, a TGF $\beta$ R1 small molecule inhibitor, promotes anti-tumor immunity leading to durable, complete responses, as monotherapy and in combination with checkpoint blockade. *J Immunother Cancer*. 2018;**6**:47. <https://doi.org/10.1186/s40425-018-0356-4>
- 52 Keedy VL, Bauer TM, Clarke JM, Hurwitz H, Baek I, Ha I, et al. Association of TGF- $\beta$  responsive signature with anti-tumor effect of vactosertib, a potent oral TGF- $\beta$  receptor type I (TGFBR1) inhibitor in patients with advanced solid tumors. *J Clin Oncol*. 2018;**36**:3031.
- 53 Vactosertib in combination with pembrolizumab in metastatic colorectal or gastric cancer. [cited 2021 November 01]. Available from: <https://clinicaltrials.gov/ct2/show/NCT03724851>
- 54 Study of vactosertib in combination with durvalumab in advanced NSCLC. [cited 2021 November 01]. Available from: <https://clinicaltrials.gov/ct2/show/NCT03732274>
- 55 Azhar M, Schultz JEJ, Grupp I, Dorn GW, Meneton P, Molin DGM, et al. Transforming growth factor beta in cardiovascular development and function. *Cytokine Growth Factor Rev*. 2003;**14**:391–407. [https://doi.org/10.1016/s1359-6101\(03\)00044-3](https://doi.org/10.1016/s1359-6101(03)00044-3)
- 56 Anderton MJ, Mellor HR, Bell A, Sadler C, Pass M, Powell S, et al. Induction of heart valve lesions by small-molecule ALK5 inhibitors. *Toxicol Pathol*. 2011;**39**:916–24. <https://doi.org/10.1177/0192623311416259>
- 57 Herbertz S, Sawyer JS, Stauber AJ, Gueorguieva I, Driscoll KE, Estrem ST, et al. Clinical development of galunisertib (LY2157299 monohydrate), a small molecule inhibitor of transforming growth factor-beta signaling pathway. *Drug Des Devel Ther*. 2015;**9**:4479–99. <https://doi.org/10.2147/DDDT.S86621>
- 58 Tolcher AW, Berlin JD, Cosaert J, Kauh J, Chan E, Piha-Paul SA, et al. A phase 1 study of anti-TGF $\beta$  receptor type-II monoclonal antibody LY3022859 in

- patients with advanced solid tumors. *Cancer Chemother Pharmacol.* 2017;**79**:673–80. <https://doi.org/10.1007/s00280-017-3245-5>
- 59 Chen DS, Mellman I. Elements of cancer immunity and the cancer-immune set point. *Nature.* 2017;**541**:321–30. <https://doi.org/10.1038/nature21349>
- 60 Ferris RL, Lenz HJ, Trotta AM, García-Foncillas J, Schulten J, Audhuy F, et al. Rationale for combination of therapeutic antibodies targeting tumor cells and immune checkpoint receptors: Harnessing innate and adaptive immunity through IgG1 isotype immune effector stimulation. *Cancer Treat Rev.* 2018;**63**:48–60. <https://doi.org/10.1016/j.ctrv.2017.11.008>
- 61 Daud AI, Wolchok JD, Robert C, Hwu WJ, Weber JS, Ribas A, et al. Programmed death-ligand 1 expression and response to the anti-programmed death 1 antibody pembrolizumab in melanoma. *J Clin Oncol.* 2016;**34**:4102–9. <https://doi.org/10.1200/JCO.2016.67.2477>
- 62 Eissler N, Mao Y, Brodin D, Reuterswärd P, Andersson Svahn H, Johnsen JI, et al. Regulation of myeloid cells by activated T cells determines the efficacy of PD-1 blockade. *Oncoimmunology.* 2016;**5**:e1232222. <https://doi.org/10.1080/2162402X.2016.1232222>
- 63 Bluthgen MV, Besse B. Second-line combination therapies in nonsmall cell lung cancer without known driver mutations. *Eur Respir Rev.* 2015;**24**:582–93. <https://doi.org/10.1183/16000617.00002115>
- 64 Garon EB, Rizvi NA, Hui R, Leigh N, Balmanoukian AS, Eder JP, et al. Pembrolizumab for the treatment of non-small-cell lung cancer. *N Engl J Med.* 2015;**372**:2018–28. <https://doi.org/10.1056/NEJMoa1501824>
- 65 NCCN Clinical Practice Guidelines in Oncology (NCCN Guidelines®). Non-small cell lung cancer. Version 1.2022.
- 66 Ascierto PA, Long GV, Robert C, Brady B, Dutriaux C, Di Giacomo AM, et al. Survival outcomes in patients with previously untreated BRAF wild-type advanced melanoma treated with nivolumab therapy: three-year follow-up of a randomized phase 3 trial. *JAMA Oncol.* 2019;**5**:187–94. <https://doi.org/10.1001/jamaoncol.2018.4514>
- 67 Robert C, Long GV, Brady B, Dutriaux C, Maio M, Mortier L, et al. Nivolumab in previously untreated melanoma without BRAF mutation. *N Engl J Med.* 2015;**372**:320–30. <https://doi.org/10.1056/NEJMoa1412082>
- 68 Chow LQM, Haddad R, Gupta S, Mahipal A, Mehra R, Tahara M, et al. Antitumor activity of pembrolizumab in biomarker-unselected patients with recurrent and/or metastatic head and neck squamous cell carcinoma: results from the phase 1b KEYNOTE-012 expansion cohort. *J Clin Oncol.* 2016;**34**:3838–45. <https://doi.org/10.1200/jco.2016.68.1478>
- 69 Mehra R, Seiwert TY, Gupta S, Weiss J, Gluck I, Eder JP, et al. Efficacy and safety of pembrolizumab in recurrent/metastatic head and neck squamous cell carcinoma: pooled analyses after long-term follow-up in KEYNOTE-012. *Br J Cancer.* 2018;**119**:153–9.
- 70 Motzer RJ, Rini BI, McDermott DF, Redman BG, Kuzel TM, Harrison MR, et al. Nivolumab for metastatic renal cell carcinoma: results of a randomized phase II trial. *J Clin Oncol.* 2015;**33**:1430–7. <https://doi.org/10.1200/JCO.2014.59.0703>
- 71 Motzer RJ, Escudier B, McDermott DF, George S, Hammers HJ, Srinivas S, et al. Nivolumab versus everolimus in advanced renal-cell carcinoma. *N Engl J Med.* 2015;**373**:1803–13. <https://doi.org/10.1056/NEJMoa1510665>
- 72 NCCN Clinical Practice Guidelines in Oncology (NCCN Guidelines®). Kidney cancer. Version 3.2022.
- 73 Bellmunt J, de Wit R, Vaughn DJ, Fradet Y, Lee JL, Fong L, et al. Pembrolizumab as second-line therapy for advanced urothelial carcinoma. *N Engl J Med.* 2017;**376**:1015–26. <https://doi.org/10.1056/NEJMoa1613683>
- 74 De Santis M, Bellmunt J, Mead G, Kerst JM, Leahy M, Maroto P, et al. Randomized phase II/III trial assessing gemcitabine/carboplatin and methotrexate/carboplatin/vinblastine in patients with advanced urothelial cancer who are unfit for cisplatin-based chemotherapy: EORTC study 30986. *J Clin Oncol.* 2012;**30**:191–9. <https://doi.org/10.1200/JCO.2011.37.3571>
- 75 Dogliotti L, Carteni G, Siena S, Bertetto O, Martoni A, Bono A, et al. Gemcitabine plus cisplatin versus gemcitabine plus carboplatin as first-line chemotherapy in advanced transitional cell carcinoma of the urothelium: results of a randomized phase 2 trial. *Eur Urol.* 2007;**52**:134–41. <https://doi.org/10.1016/j.eururo.2006.12.029>
- 76 von der Maase H, Sengelov L, Roberts JT, Ricci S, Dogliotti L, Oliver T, et al. Long-term survival results of a randomized trial comparing gemcitabine plus cisplatin, with methotrexate, vinblastine, doxorubicin, plus cisplatin in patients with bladder cancer. *J Clin Oncol.* 2005;**23**:4602–8. <https://doi.org/10.1200/JCO.2005.07.757>
- 77 Powles T, Park SH, Voog E, Caserta C, Valderrama BP, Gurney H, et al. Avelumab maintenance therapy for advanced or metastatic urothelial carcinoma. *N Engl J Med.* 2020;**383**:1218–30. <https://doi.org/10.1056/NEJMoa2002788>
- 78 Schmidt EV. Developing combination strategies using PD-1 checkpoint inhibitors to treat cancer. *Semin Immunopathol.* 2019;**41**:21–30. <https://doi.org/10.1007/s00281-018-0714-9>

- 79 Sharma P, Hu-Lieskovan S, Wargo JA, Ribas A. Primary, adaptive, and acquired resistance to cancer immunotherapy. *Cell*. 2017;**168**:707–23. <https://doi.org/10.1016/j.cell.2017.01.017>
- 80 Liu D, Jenkins RW, Sullivan RJ. Mechanisms of resistance to immune checkpoint blockade. *Am J Clin Dermatol*. 2019;**20**:41–54. <https://doi.org/10.1007/s40257-018-0389-y>
- 81 Trujillo JA, Sweis RF, Bao R, Luke JJ. T cell-inflamed versus non-T cell-inflamed tumors: a conceptual framework for cancer immunotherapy drug development and combination therapy selection. *Cancer Immunol Res*. 2018;**6**:990–1000. <https://doi.org/10.1158/2326-6066.CIR-18-0277>
- 82 Wan YY, Flavell RA. 'Yin-Yang' functions of transforming growth factor-beta and T regulatory cells in immune regulation. *Immunol Rev*. 2007;**220**:199–213. <https://doi.org/10.1111/j.1600-065X.2007.00565.x>
- 83 Courau T, Nehar-Belaid D, Florez L, Levacher B, Vazquez T, Brimaud F, et al. TGF- $\beta$  and VEGF cooperatively control the immunotolerant tumor environment and the efficacy of cancer immunotherapies. *JCI Insight*. 2016;**1**:e85974. <https://doi.org/10.1172/jci.insight.85974>
- 84 Kim JW, Ha H, Lee K-H, Nam A-R, Bang J-H, Jin MH, et al. The prognostic role of soluble transforming growth factor- $\beta$  related with soluble programmed death-ligand 1 in biliary tract cancer. *J Clin Oncol*. 2019;**37**:4094.
- 85 Groeneveldt C, van Hall T, van der Burg SH, Ten Dijke P, van Montfoort N. Immunotherapeutic potential of TGF- $\beta$  inhibition and oncolytic viruses. *Trends Immunol*. 2020;**41**:406–20. <https://doi.org/10.1016/j.it.2020.03.003>
- 86 Ravi R, Noonan KA, Pham V, Bedi R, Zhavoronkov A, Ozerov IV, et al. Bifunctional immune checkpoint-targeted antibody-ligand traps that simultaneously disable TGF $\beta$  enhance the efficacy of cancer immunotherapy. *Nat Commun*. 2018;**9**:741. <https://doi.org/10.1038/s41467-017-02696-6>
- 87 Yi M, Zhang J, Li A, Niu M, Yan Y, Jiao Y, et al. The construction, expression, and enhanced anti-tumor activity of YM101: a bispecific antibody simultaneously targeting TGF- $\beta$  and PD-L1. *J Hematol Oncol*. 2021;**14**:27. <https://doi.org/10.1186/s13045-021-01045-x>
- 88 Lan Y, Zhang D, Xu C, Hance KW, Marelli B, Qi J, et al. Enhanced preclinical antitumor activity of M7824, a bifunctional fusion protein simultaneously targeting PD-L1 and TGF- $\beta$ . *Sci Transl Med*. 2018;**10**:eaan5488.
- 89 Knudson KM, Hicks KC, Luo X, Chen JQ, Schlom J, Gameiro SR. M7824, a novel bifunctional anti-PD-L1/TGF $\beta$  Trap fusion protein, promotes anti-tumor efficacy as monotherapy and in combination with vaccine. *Oncoimmunology*. 2018;**7**:e1426519. <https://doi.org/10.1080/2162402X.2018.1426519>
- 90 Strauss J, Heery CR, Schlom J, Madan RA, Cao L, Kang Z, et al. Phase I trial of M7824 (MSB0011359C), a bifunctional fusion protein targeting PD-L1 and TGF $\beta$ , in advanced solid tumors. *Clin Cancer Res*. 2018;**24**:1287–95. <https://doi.org/10.1158/1078-0432.CCR-17-2653>
- 91 Burvenich IJG, Goh YW, Guo N, Gan HK, Rigopoulos A, Cao D, et al. Radiolabelling and preclinical characterization of  $^{89}\text{Zr}$ -Df-radiolabelled bispecific anti-PD-L1/TGF- $\beta$ R2 fusion protein bintrafusp alfa. *Eur J Nucl Med Mol Imaging*. 2021;**48**:3075–88. <https://doi.org/10.1007/s00259-021-05251-0>
- 92 David JM, Dominguez C, McCampbell KK, Gulley JL, Schlom J, Palena C. A novel bifunctional anti-PD-L1/TGF- $\beta$  Trap fusion protein (M7824) efficiently reverts mesenchymalization of human lung cancer cells. *Oncoimmunology*. 2017;**6**:e1349589. <https://doi.org/10.1080/2162402X.2017.1349589>
- 93 Cox TR, Erler JT. Molecular pathways: connecting fibrosis and solid tumor metastasis. *Clin Cancer Res*. 2014;**20**:3637–43. <https://doi.org/10.1158/1078-0432.CCR-13-1059>
- 94 Eser P, Jänne PA. TGF $\beta$  pathway inhibition in the treatment of non-small cell lung cancer. *Pharmacol Ther*. 2018;**184**:112–30. <https://doi.org/10.1016/j.pharmthera.2017.11.004>
- 95 Jain RK. Normalizing tumor microenvironment to treat cancer: bench to bedside to biomarkers. *J Clin Oncol*. 2013;**31**:2205–18. <https://doi.org/10.1200/JCO.2012.46.3653>
- 96 Barcellos-Hoff MH, Derynck R, Tsang ML, Weatherbee JA. Transforming growth factor-beta activation in irradiated murine mammary gland. *J Clin Invest*. 1994;**93**:892–9. <https://doi.org/10.1172/JCI117045>
- 97 Demaria S, Bhardwaj N, McBride WH, Formenti SC. Combining radiotherapy and immunotherapy: a revived partnership. *Int J Radiat Oncol Biol Phys*. 2005;**63**:655–66. <https://doi.org/10.1016/j.ijrobp.2005.06.032>
- 98 Morillon YMI, Smalley Rumfield C, Pellom ST, Sabzevari A, Roller NT, Horn LA, et al. The use of a humanized NSG- $\beta$ 2m. *Front Oncol*. 2020;**10**:549. <https://doi.org/10.3389/fonc.2020.00549>
- 99 Barker HE, Paget JT, Khan AA, Harrington KJ. The tumour microenvironment after radiotherapy: mechanisms of resistance and recurrence. *Nat Rev Cancer*. 2015;**15**:409–25. <https://doi.org/10.1038/nrc3958>
- 100 Chen J, Ding ZY, Li S, Liu S, Xiao C, Li Z, et al. Targeting transforming growth factor- $\beta$  signaling for



- enhanced cancer chemotherapy. *Theranostics*. 2021;**11**:1345–63. <https://doi.org/10.7150/thno.51383>
- 101 Pilot study of durvalumab and vigal in advanced women's cancers. [cited 2021 November 01]. Available from: <https://clinicaltrials.gov/ct2/show/NCT02725489>
- 102 A study of galunisertib (LY2157299) and durvalumab (MEDI4736) in participants with metastatic pancreatic cancer. [cited 2021 November 01]. Available from: <https://clinicaltrials.gov/ct2/show/NCT02734160>
- 103 Melisi D, Oh DY, Hollebecque A, Calvo E, Varghese A, Borazanci E, et al. Safety and activity of the TGF $\beta$  receptor I kinase inhibitor galunisertib plus the anti-PD-L1 antibody durvalumab in metastatic pancreatic cancer. *J Immunother Cancer*. 2021;**9**:e002068. <https://doi.org/10.1136/jitc-2020-002068>
- 104 A study of galunisertib (LY2157299) in combination with nivolumab in advanced refractory solid tumors and in recurrent or refractory NSCLC, or hepatocellular carcinoma. [cited 2021 November 01]. Available from: <https://clinicaltrials.gov/ct2/show/NCT02423343>
- 105 Kelley RK, Gane E, Assenat E, Siebler J, Galle PR, Merle P, et al. A phase 2 study of galunisertib (TGF- $\beta$ 1 receptor type I Inhibitor) and sorafenib in patients with advanced hepatocellular carcinoma. *Clin Transl Gastroenterol*. 2019;**10**:e00056. <https://doi.org/10.14309/ctg.0000000000000056>
- 106 Yap T, Baldini C, Massard C, Gueorguieva I, Zhao Y, Schmidt S, et al. First-in-human phase 1 dose-escalation trial of the potent and selective next generation transforming growth factor- $\beta$  receptor type 1 (TGF- $\beta$ R1) inhibitor LY3200882 in patients with advanced cancers. Washington, DC: SITC; November 7–11, 2018. Abstract O30.
- 107 Lan Y, Moustafa M, Knoll M, Xu C, Furkel J, Lazorchak A, et al. Simultaneous targeting of TGF- $\beta$ /PD-L1 synergizes with radiotherapy by reprogramming the tumor microenvironment to overcome immune evasion. *Cancer Cell*. 2021;**39**:1388–403.e1310. <https://doi.org/10.1016/j.ccell.2021.08.008>
- 108 Strait AA, Woolaver RA, Hall SC, Young CD, Karam SD, Jimeno A, et al. Distinct immune microenvironment profiles of therapeutic responders emerge in combined TGF $\beta$ /PD-L1 blockade-treated squamous cell carcinoma. *Commun Biol*. 2021;**4**:1005. <https://doi.org/10.1038/s42003-021-02522-2>
- 109 SHR-1701 in metastatic or locally advanced solid tumors. [cited 2021 November 01]. Available from: <https://clinicaltrials.gov/ct2/show/NCT03710265>
- 110 SHR-1701 in patients with recurrent/metastatic nasopharyngeal carcinoma. [cited 2021 November 01]. Available from: <https://clinicaltrials.gov/ct2/show/NCT04282070>
- 111 SHR-1701 in subjects with metastatic or locally advanced solid tumors. [cited 2021 November 01]. Available from: <https://clinicaltrials.gov/ct2/show/NCT03774979>
- 112 A trial of SHR1701 combined with radiotherapy for metastatic non-small cell lung cancer failure after first-line treatment. [cited 2021 November 01]. Available from: <https://clinicaltrials.gov/ct2/show/NCT04560244>
- 113 A trial of SHR-1701 in subjects with advanced solid tumors. [cited 2021 November 01]. Available from: <https://clinicaltrials.gov/ct2/show/NCT04324814>
- 114 Gemcitabine plus cisplatin with or without bintrafusp alfa (M7824) in participants with IL biliary tract cancer (BTC). [cited 2021 November 01]. Available from: <https://clinicaltrials.gov/ct2/show/NCT04066491>
- 115 M7824 in combination with chemotherapy in stage IV non-small cell lung cancer (NSCLC). [cited 2021 November 01]. Available from: <https://clinicaltrials.gov/ct2/show/NCT03840915>
- 116 M7824 with cCRT in unresectable stage III non-small cell lung cancer (NSCLC). [cited 2021 November 01]. Available from: <https://clinicaltrials.gov/ct2/show/NCT03840902>
- 117 MSB0011359C (M7824) in metastatic or locally advanced solid tumors. [cited 2021 November 01]. Available from: <https://clinicaltrials.gov/ct2/show/NCT02517398>
- 118 MSB0011359C (M7824) in subjects with metastatic or locally advanced solid tumors. [cited 2021 November 01]. Available from: <https://clinicaltrials.gov/ct2/show/NCT02699515>
- 119 Lind H, Gameiro SR, Jochems C, Donahue RN, Strauss J, Gulley JL, et al. Dual targeting of TGF- $\beta$  and PD-L1 via a bifunctional anti-PD-L1/TGF- $\beta$ R1I agent: status of preclinical and clinical advances. *J Immunother Cancer*. 2020;**8**:e000433. <https://doi.org/10.1136/jitc-2019-000433>
- 120 Paz-Ares L, Kim TM, Vicente D, Felip E, Lee DH, Lee KH, et al. Bintrafusp alfa, a bifunctional fusion protein targeting TGF- $\beta$  and PD-L1, in second-line treatment of patients with NSCLC: results from an expansion cohort of a phase 1 trial. *J Thorac Oncol*. 2020;**15**:1210–22. <https://doi.org/10.1016/j.jtho.2020.03.003>
- 121 Liu D, Gong J, Liu T, Li K, Yin X, Liu Y, et al. Phase 1 study of SHR-1701, a bifunctional fusion protein targeting PD-L1 and TGF- $\beta$ , in patients with advanced solid tumors. *J Clin Oncol*. 2021;**39**:2503.
- 122 Shi M, Chen J, Li K, Fang Y, Wen G, Li X, et al. SHR-1701, a bifunctional fusion protein targeting PD-L1 and TGF- $\beta$ , for advanced NSCLC with *EGFR* mutations: data from a multicenter phase 1 study. *J Clin Oncol*. 2021;**39**:9055.
- 123 Cho BC, Daste A, Ravaud A, Salas S, Isambert N, McClay E, et al. Bintrafusp alfa, a bifunctional fusion protein targeting TGF- $\beta$  and PD-L1, in advanced squamous cell carcinoma of the head and neck: results

- from a phase I cohort. *J Immunother Cancer*. 2020;**8**: e000664. <https://doi.org/10.1136/jitc-2020-000664>
- 124 Doi T, Fujiwara Y, Koyama T, Ikeda M, Helwig C, Watanabe M, et al. Phase I study of the bifunctional fusion protein bintrafusp alfa in Asian patients with advanced solid tumors, including a hepatocellular carcinoma safety-assessment cohort. *Oncologist*. 2020;**25**:e1292-302. <https://doi.org/10.1634/theoncologist.2020-0249>
  - 125 Kang YK, Bang YJ, Kondo S, Chung HC, Muro K, Dussault I, et al. Safety and tolerability of bintrafusp alfa, a bifunctional fusion protein targeting TGF $\beta$  and PD-L1, in Asian patients with pretreated recurrent or refractory gastric cancer. *Clin Cancer Res*. 2020;**26**:3202-10. <https://doi.org/10.1158/1078-0432.Ccr-19-3806>
  - 126 Khasraw M, Weller M, Lorente D, Kolibaba K, Lee CK, Gedye C, et al. Bintrafusp alfa (M7824) a bifunctional fusion protein targeting TGF- $\beta$  and PD-L1: results from a phase I expansion cohort in patients with recurrent glioblastoma. *Neurooncol Adv*. 2021;**3**: vdab058. <https://doi.org/10.1093/oaajnl/vdab058>.
  - 127 Lin CC, Doi T, Muro K, Hou MM, Esaki T, Hara H, et al. Bintrafusp alfa, a bifunctional fusion protein targeting TGF $\beta$  and PD-L1, in patients with esophageal squamous cell carcinoma: results from a phase I cohort in Asia. *Target Oncol*. 2021;**16**:447-59. <https://doi.org/10.1007/s11523-021-00810-9>
  - 128 Tan B, Khattak A, Felip E, Kelly K, Rich P, Wang D, et al. Bintrafusp alfa, a bifunctional fusion protein targeting TGF- $\beta$  and PD-L1, in patients with esophageal adenocarcinoma: results from a phase I cohort. *Target Oncol*. 2021;**16**:435-46. <https://doi.org/10.1007/s11523-021-00809-2>
  - 129 Yoo C, Oh DY, Choi HJ, Kudo M, Ueno M, Kondo S, et al. Phase I study of bintrafusp alfa, a bifunctional fusion protein targeting TGF- $\beta$  and PD-L1, in patients with pretreated biliary tract cancer. *J Immunother Cancer*. 2020;**8**:e000564. <https://doi.org/10.1136/jitc-2020-000564>
  - 130 M7824 versus pembrolizumab as a first-line (1L) treatment in participants with programmed death-ligand 1 (PD-L1) expressing advanced non-small cell lung cancer (NSCLC). [cited 2021 November 01]. Available from: <https://clinicaltrials.gov/ct2/show/NCT03631706>
  - 131 Merck KGaA, Darmstadt, Germany announces update on the INTR@PID clinical program including lung 037 study. New York, NY: Cision PR Newswire; 2021. Available from: <https://www.prnewswire.com/news-releases/merck-kgaa-darmstadt-germany-announces-update-on-the-intrpid-clinical-program-including-lung-037-study-301211771.html>
  - 132 Merck KGaA, Darmstadt, Germany statement on phase II study of bintrafusp alfa in first-line treatment of biliary tract cancer. Darmstadt, Germany: Merck KGaA; 2021. (press release). Available from: <https://www.emdgroup.com/en/news/bintrafusp-alfa-update-23-08-2021.html>
  - 133 M7824 monotherapy in locally advanced or metastatic second line (2L) biliary tract cancer (cholangiocarcinoma and gallbladder cancer). [cited 2021 November 01]. Available from: <https://clinicaltrials.gov/ct2/show/NCT03833661>
  - 134 Bintrafusp alfa in high mobility group AT-Hook 2 (HMGA2) expressing triple negative breast cancer. [cited 2021 November 01]. Available from: ClinicalTrials.gov
  - 135 Bintrafusp alfa monotherapy in platinum-experienced cervical cancer. [cited 2021 November 01]. Available from: <https://clinicaltrials.gov/ct2/show/NCT04246489>
  - 136 Bintrafusp alfa combination therapy in participants with cervical cancer (INTR@PID 046). [cited 2021 November 01]. Available from: ClinicalTrials.gov
  - 137 A study to evaluate the efficacy and safety of bintrafusp alfa (M7824) monotherapy in metastatic or locally advanced urothelial cancer. [cited 2021 November 01]. Available from: ClinicalTrials.gov
  - 138 SRK-181 alone or in combination with anti-PD-(L)1 antibody therapy in patients with locally advanced or metastatic solid tumors (DRAGON). [cited 2021 November 01]. Available from: <https://clinicaltrials.gov/ct2/show/NCT04291079>