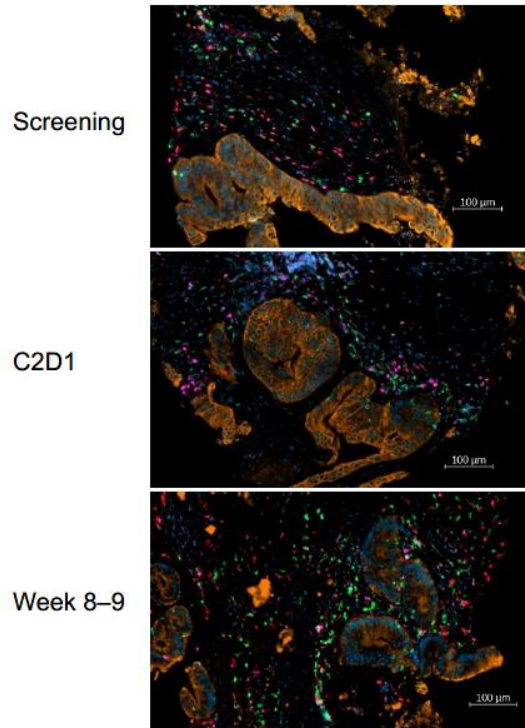


ADDITIONAL FILE 3

Supplemental Figure 3 Representative multicolor immunohistochemistry of tumor samples from a patient with CRC assigned to group A-4.



	Cells per mm ²					
	Tumor			Tumor+Stroma		
	CD3	CD8	FoxP3	CD3	CD8	FoxP3
Screening	158	137	74	909	484	169
C2D1	272	204	38	1347	787	196
Week 8-9	270	239	112	1119	746	222

Orange: pan-cytokeratin; red: CD3; green: CD8; magenta: FoxP3; blue: DAPI.

C, cycle; CD, cluster of differentiation; CRC, colorectal cancer; D, day; DAPI, 4',6-diamidino-2-phenylindole.